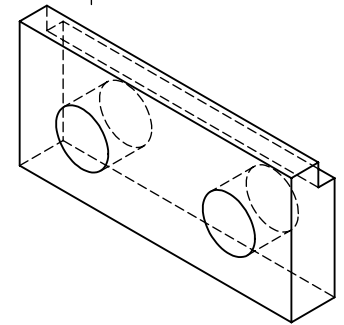
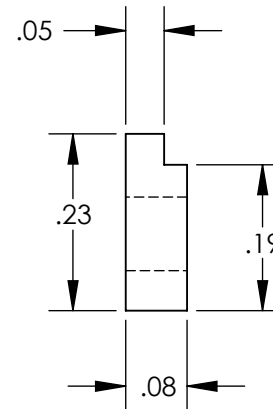
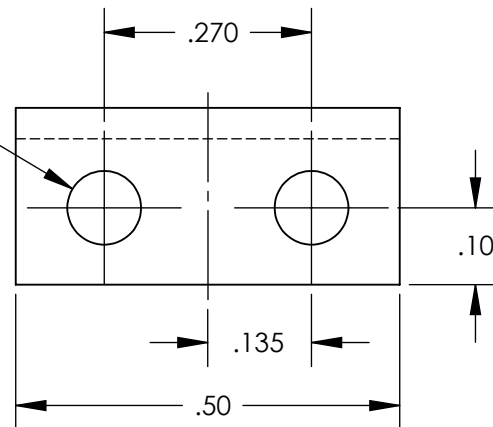


REV.	DATE	DCN #	DRAWING TREE #
A	4 AUG 2008	E080419-00-D	



2X \varnothing .096 THRU ALL



NOTES: (UNLESS OTHERWISE SPECIFIED)

1. REMOVE ALL SHARP EDGES, R.02 MIN.
2. DO NOT SCALE FROM DRAWING.
3. ALL MACHINING FLUIDS SHALL BE WATER SOLUBLE AND FREE OF SULFUR, CHLORINE AND SILICONE, SUCH AS CINCINNATI MILACRON'S CIMTECH 410 (STAINLESS STEEL)
4. BAG ALL ITEMS INDIVIDUALLY AND TAG EACH BAG WITH DRAWING NUMBER, REVISION, AND QUANTITY EXAMPLE: D080071-A; QTY: fbd
5. 'L' AND 'LN' VARIANTS OF 304, 302, AND 316 TYPE SSSL ARE ALSO ACCEPTABLE.
6. 303 TYPE SSSL IS NOT ACCEPTABLE.

DIMENSIONS ARE IN INCHES

TOLERANCES:
 .XX ± 0.01
 .XXX ± 0.005

ANGULAR ± 0.5 °

MATERIAL
 304, 316, OR 302 SSSL

FINISH
 63 μ inch

	NAME	DATE
DRAWN	M. MEYER	07 JAN 2008
CHECKED	J. ROMIE	4 AUG 2008
APPROVED		

CALIFORNIA INSTITUTE OF TECHNOLOGY MASSACHUSETTS INSTITUTE OF TECHNOLOGY IGR, GLASGOW UNIVERSITY GEO 600 GROUP	
SYSTEM	ADVANCED LIGO
SUB-SYSTEM	SUS
NEXT ASSY	TT MIRROR ASSY
PART NAME	
OUTER WIRE CLAMP	
SIZE	DWG. NO.
A	D080071
SCALE: 4:1	PROJECTION:
SHEET 1 OF 1	

REV. A