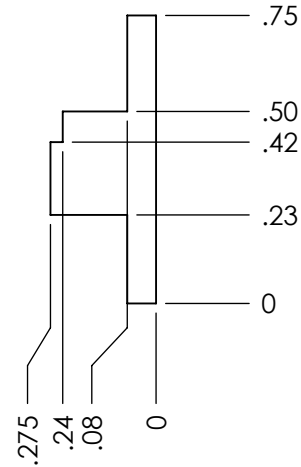
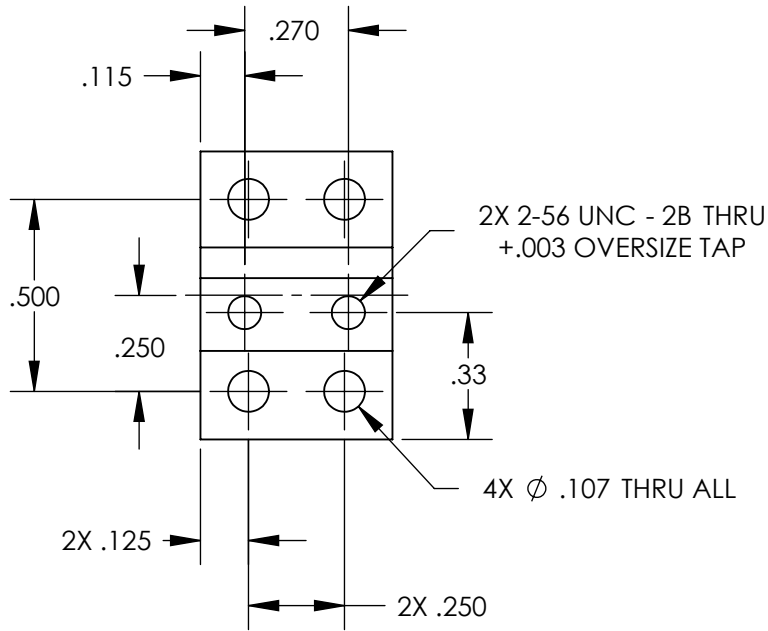
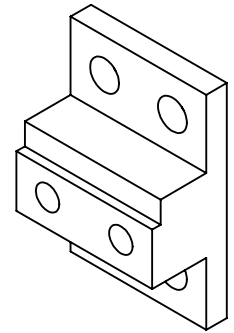
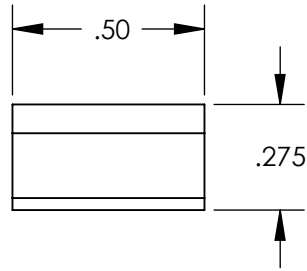



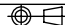
REV.	DATE	DCN #	DRAWING TREE #
A	4 AUG 2008	E080419-00-D	



NOTES: (UNLESS OTHERWISE SPECIFIED)

- REMOVE ALL SHARP EDGES, R.02 MIN.
- DO NOT SCALE FROM DRAWING.
- ALL MACHINING FLUIDS SHALL BE WATER SOLUBLE AND FREE OF SULFUR, CHLORINE AND SILICONE, SUCH AS CINCINNATI MILACRON'S CIMTECH 410 (STAINLESS STEEL)
- BAG ALL ITEMS INDIVIDUALLY AND TAG EACH BAG WITH DRAWING NUMBER, REVISION, AND QUANTITY EXAMPLE: D080071-A; QTY: fbd
- 'L' AND 'LN' VARIANTS OF 304, 302, AND 316 TYPE SSSL ARE ALSO ACCEPTABLE.
- 303 TYPE SSSL IS NOT ACCEPTABLE.

DIMENSIONS ARE IN INCHES		
TOLERANCES: .XX ± 0.01 .XXX ± 0.005		
ANGULAR ± 0.5 °		
MATERIAL 304, 316, OR 302 SSSL		
FINISH 63 μ inch		
	NAME	DATE
DRAWN	M. MEYER	07 JAN 2008
CHECKED	J. ROMIE	4 AUG 2008
APPROVED		

 CALIFORNIA INSTITUTE OF TECHNOLOGY MASSACHUSETTS INSTITUTE OF TECHNOLOGY IGR, GLASGOW UNIVERSITY GEO 600 GROUP	
SYSTEM	ADVANCED LIGO
SUB-SYSTEM	SUS
NEXT ASSY	TT MIRROR ASSY
PART NAME INNER WIRE CLAMP	
SIZE A	DWG. NO. D080070
SCALE: 2:1	PROJECTION: 
REV. A	SHEET 1 OF 1