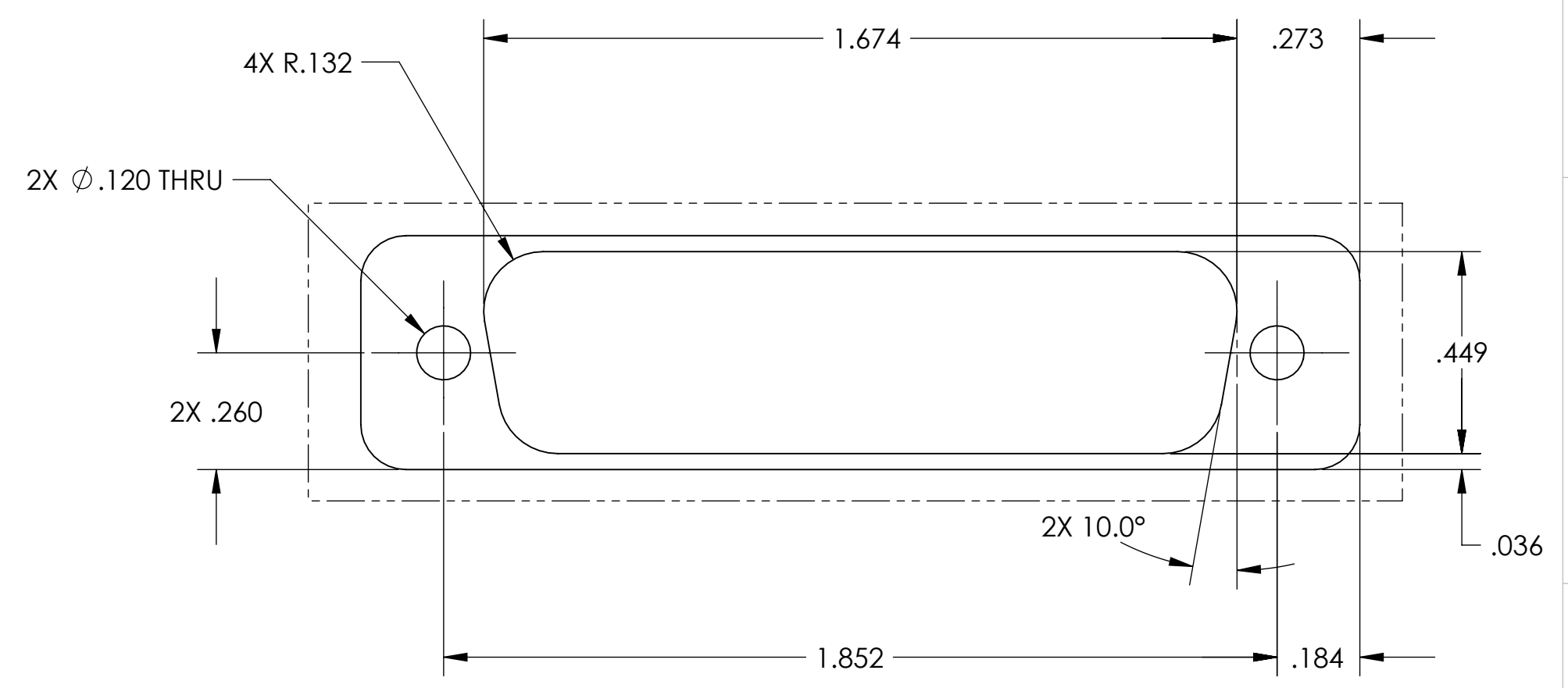
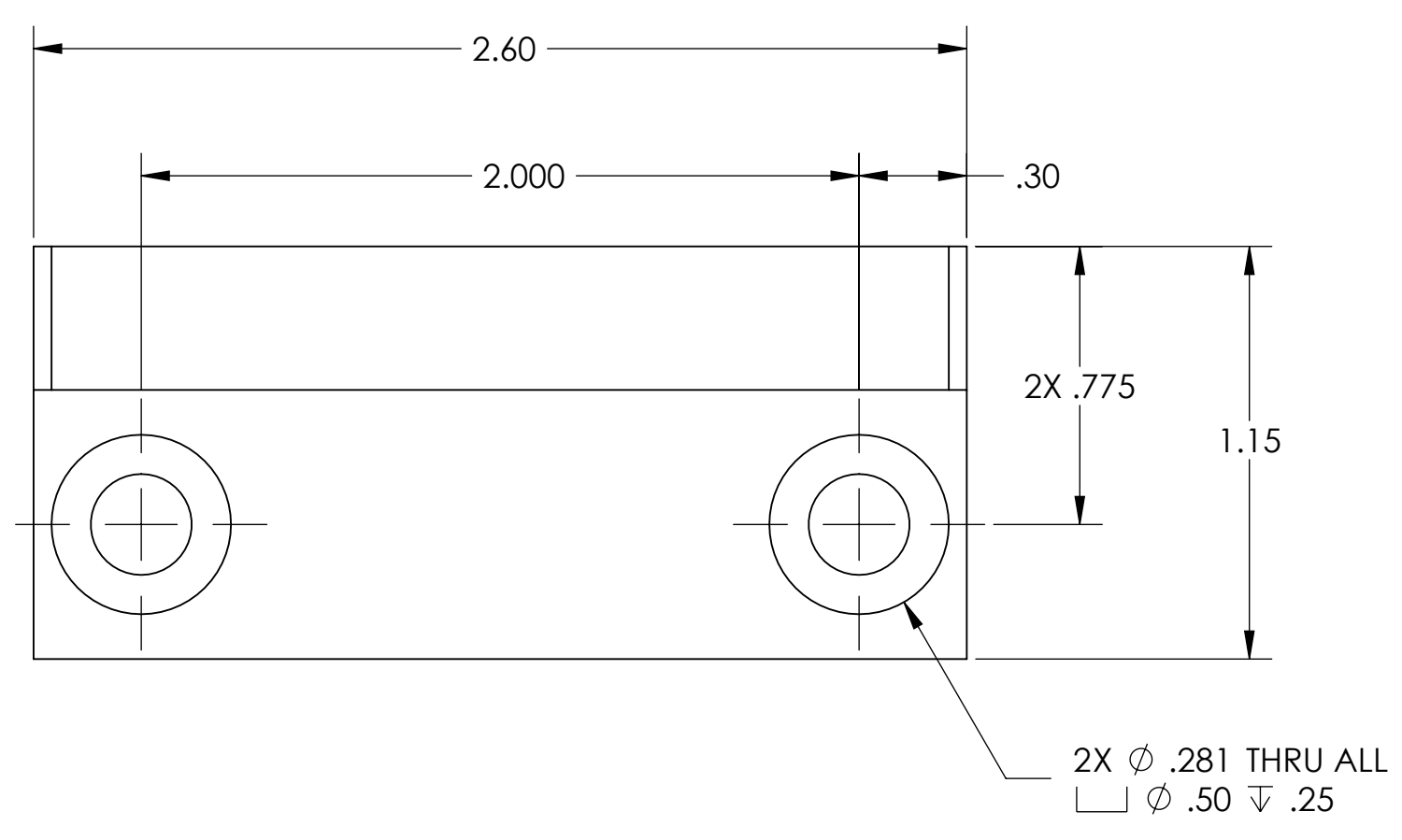
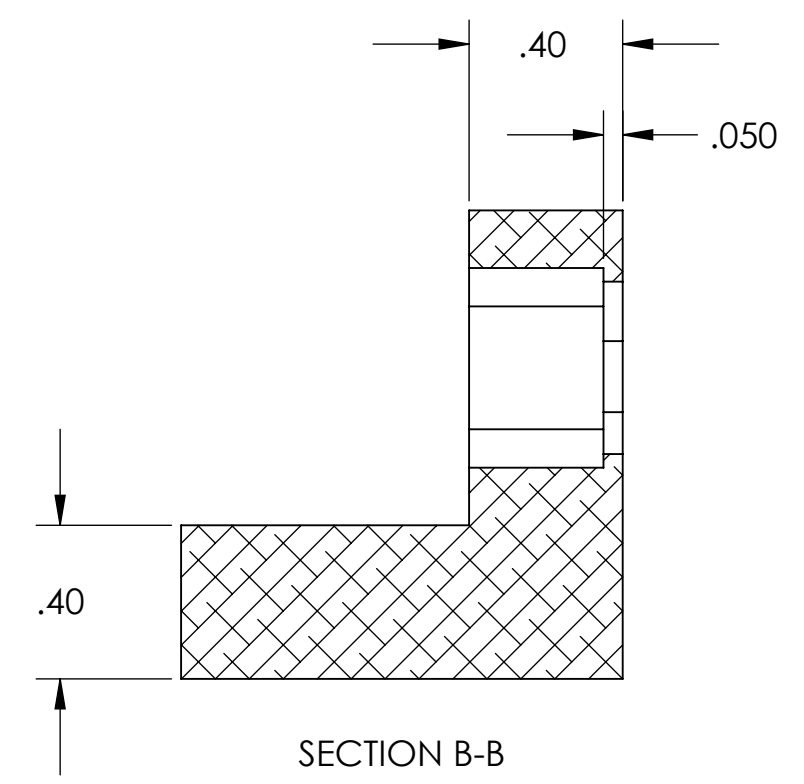
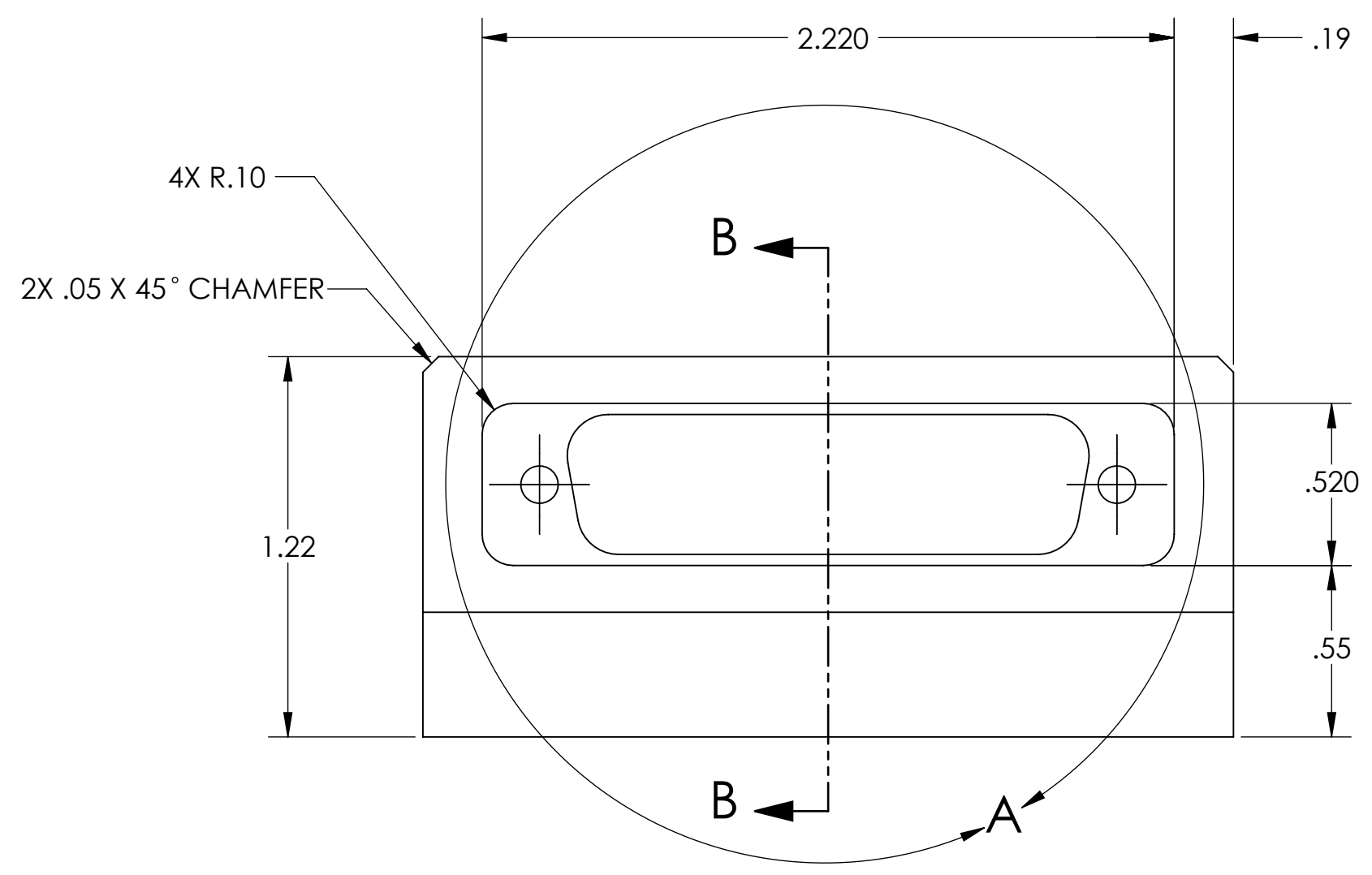


REV	DATE	APPROVAL	DESCRIPTION
A	11/9/2007	A. STEIN	INITIAL RELEASE



DETAIL A  
SCALE 3 : 1  
(25-PIN SUB-D CONNECTOR CUTOUT)



**NOTES: (UNLESS OTHERWISE SPECIFIED)**

- DO NOT SCALE FROM DRAWING.
- REMOVE ALL SHARP EDGES. LEAVE .005 X 45° MIN CHAMFER, OR .005 MIN RADIUS.
- MACHINE ALL SURFACES. NO SANDING OR TUMBLING ALLOWED.
- ALL MACHINING FLUIDS MUST BE WATER SOLUBLE AND FREE OF SULFUR, CHLORINE AND SILICONE. E.G., MILACRON CIMTECH 410.
- CLEAN THOROUGHLY TO REMOVE ALL OIL, DIRT, AND CHIPS.

DIMENSIONS ARE IN INCHES  
TOLERANCES:  
XX ± 0.015  
XXX ± 0.005  
ANGULAR ± 0.5°

**SURFACE ROUGHNESS:**

**MATERIAL:** Al 6061-T6

**FINISH:** NONE

**DRAWN:** A. STEIN  
**CHECKED:**  
**APPROVED:**

**SCALE:** 2:1

**PROJECTION:**

**CALIFORNIA INSTITUTE OF TECHNOLOGY**  
**MASSACHUSETTS INSTITUTE OF TECHNOLOGY**  
**IGR, GLASGOW UNIVERSITY GEO 600 GROUP**

**SYSTEM:** ADVANCED LIGO  
**SUB-SYSTEM:** SEI  
**NEXT ASSY:** HAM ISI

**PART NAME:** BRACKET, 25-PIN PEEK

**SIZE:** C  
**DWG. NO.:** D070502  
**REV.:** A

SCALE: 2:1 PROJECTION: SHEET 1 OF 1