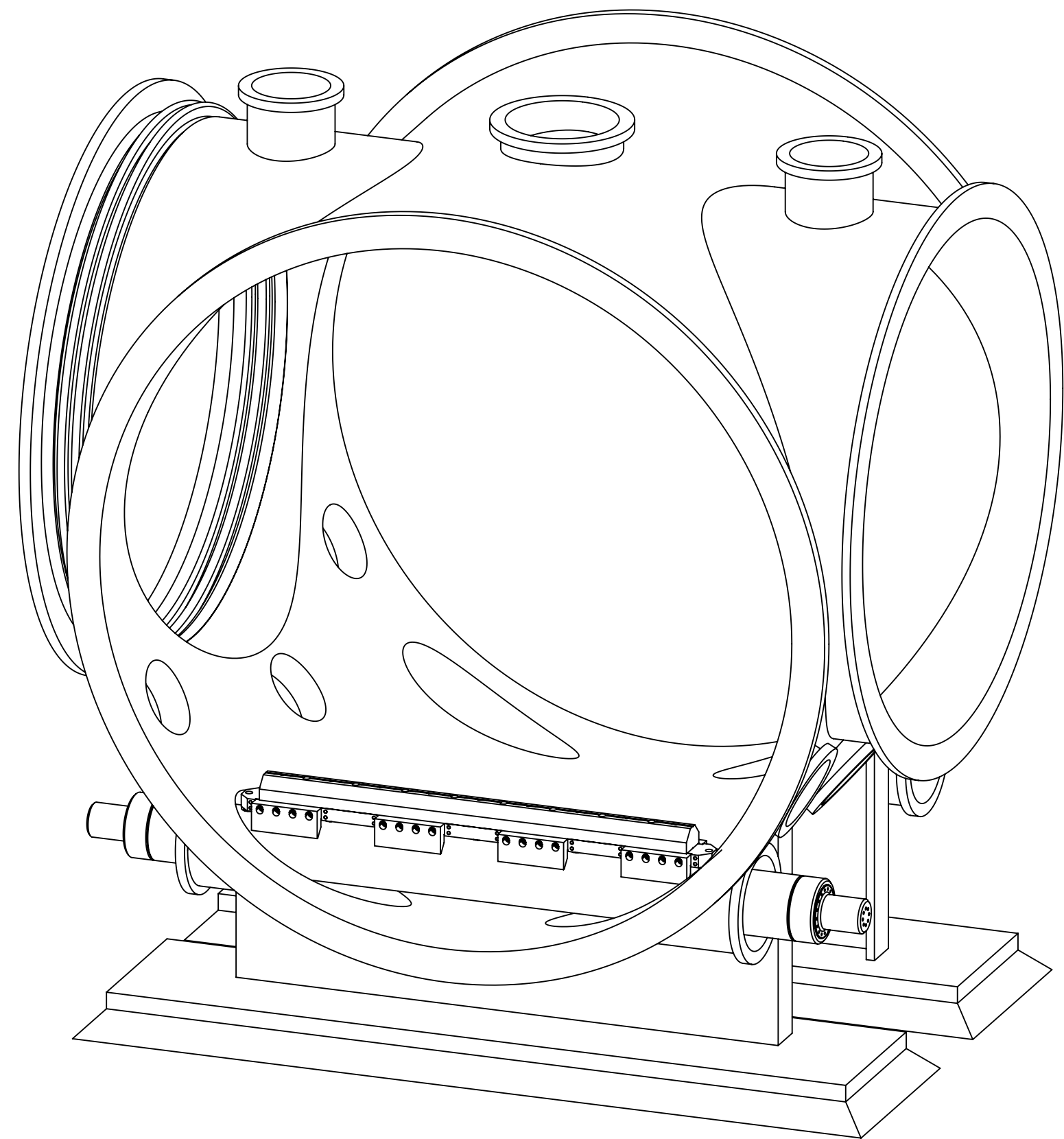


8 7 6 5 4 3 2 1

REV.	DATE	DCN #	DRAWING TREE #
-	-	-	-
-	-	-	-
-	-	-	-



D
C
B
A

D
C
B
A

SEE E1200291 FOR GENERIC INSTALLATION PROCEDURE

D070300_HAM_Riser_Assembly, PART PDM REV: X-004, DRAWING PDM REV: X-003

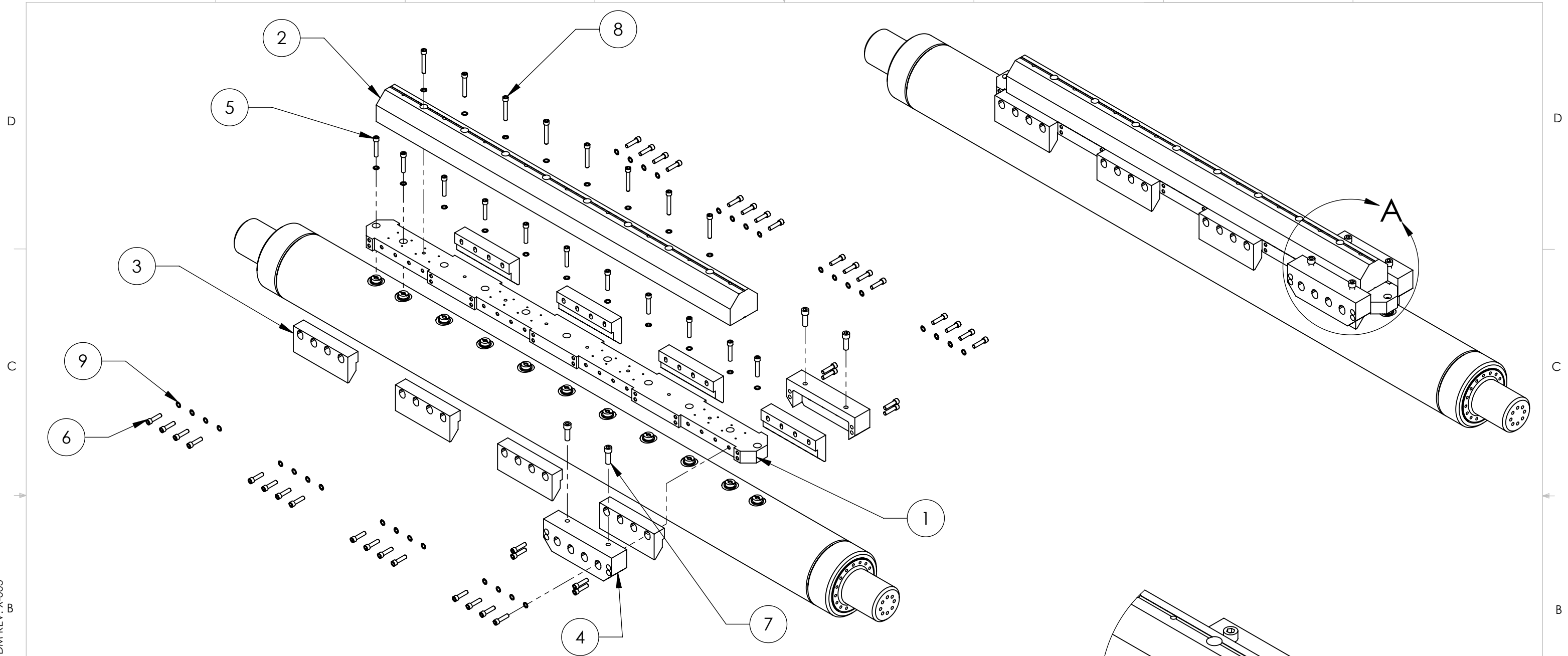
NOTES AND TOLERANCES: (UNLESS OTHERWISE SPECIFIED)
DIMENSIONS ARE IN INCHES

LIGO CALIFORNIA INSTITUTE OF TECHNOLOGY
MASSACHUSETTS INSTITUTE OF TECHNOLOGY
SYSTEM: ADVANCED LIGO SUB-SYSTEM: SEI
NEXT ASSY: HAMS 6s & 12

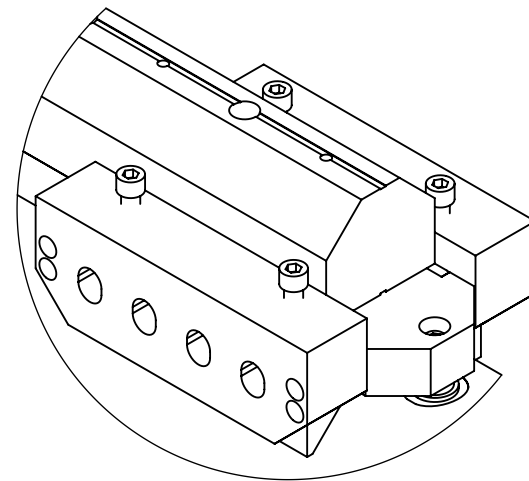
PART NAME		HAM_Riser_Assembly	
DESIGNER	FMATCHARD	13 AUG 2007	SIZE DWG. NO.
DRAFTER	SBARNUM	13 Mar 2012	B
CHECKER	FMATCHARED	13 Mar 2012	D070300
APPROVAL	KMASON	14 Mar 2012	REV. v2
SCALE: 1:15		PROJECTION:	
		SHEET 1 OF 4	

8 7 6 5 4 3 2 1

D070300_HAM_Riser_Assembly, PART PDM REV: X-004, DRAWING PDM REV: X-003



9	UC_COMPONENTS_WFV-38	Washer Vented, .39 ID X .63 OD X .032 THK #3/8"	18-8 SS	51
8	HOLOKROME_78108	SHCS, 3/8"-16x2.5"	18-8 SS	8
7	McMASTER_92196A387	SCREW 1/2-20 X 1 1/2 LG SCHS	18-8 SSTL	4
6	HOLOKROME_78102	SHCS, 3/8"-16x1.5"	18-8 SS	40
5	UCC_C3832-NA	SHCS 3/8"-24 x 2", 18-8, Ag Plate	18-8 SSTL	11
4	D070301	HAM Preloading Tool	6061-T6 Al	2
3	D070302	HAM_Tube_Bracket	6061-T6 Al	8
2	D1200349	Upper Riser for LHAM-6 ISI aLIGO	6061-T6 Al	1
1	D070301	HAM_Lower_Riser	AISI 304	1
ITEM NO.	PART NUMBER	DESCRIPTION	MATERIAL	LHAM6/QTY
PARTS LIST				

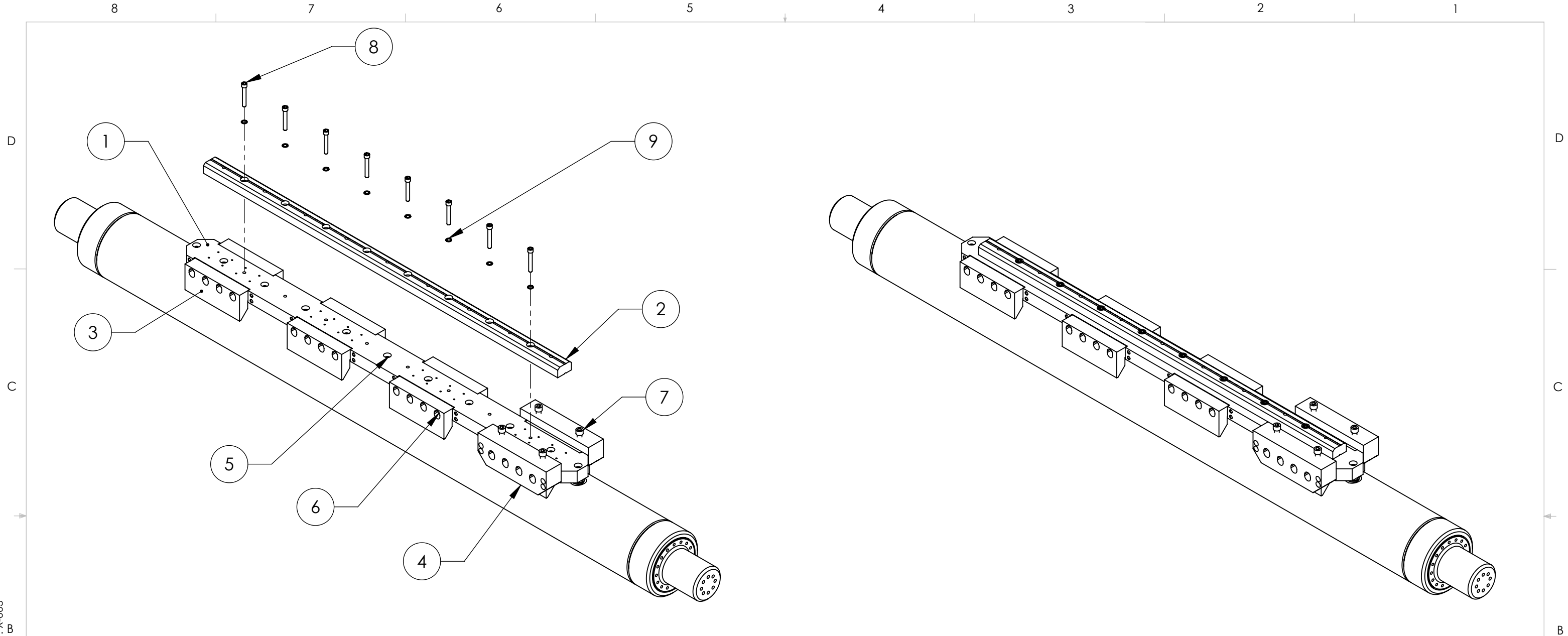


SEE E1200291 FOR GENERIC INSTALLATION PROCEDURE

DETAIL A
SCALE 1 : 5

CALIFORNIA INSTITUTE OF TECHNOLOGY MASSACHUSETTS INSTITUTE OF TECHNOLOGY	
SIZE DWG. NO.	REV.
B	D070300 v2
SCALE: 1:15 PROJECTION:	SHEET 2 OF 4

D070300_HAM_Riser_Assembly, PART PDM REV: X-004, DRAWING PDM REV: X-003

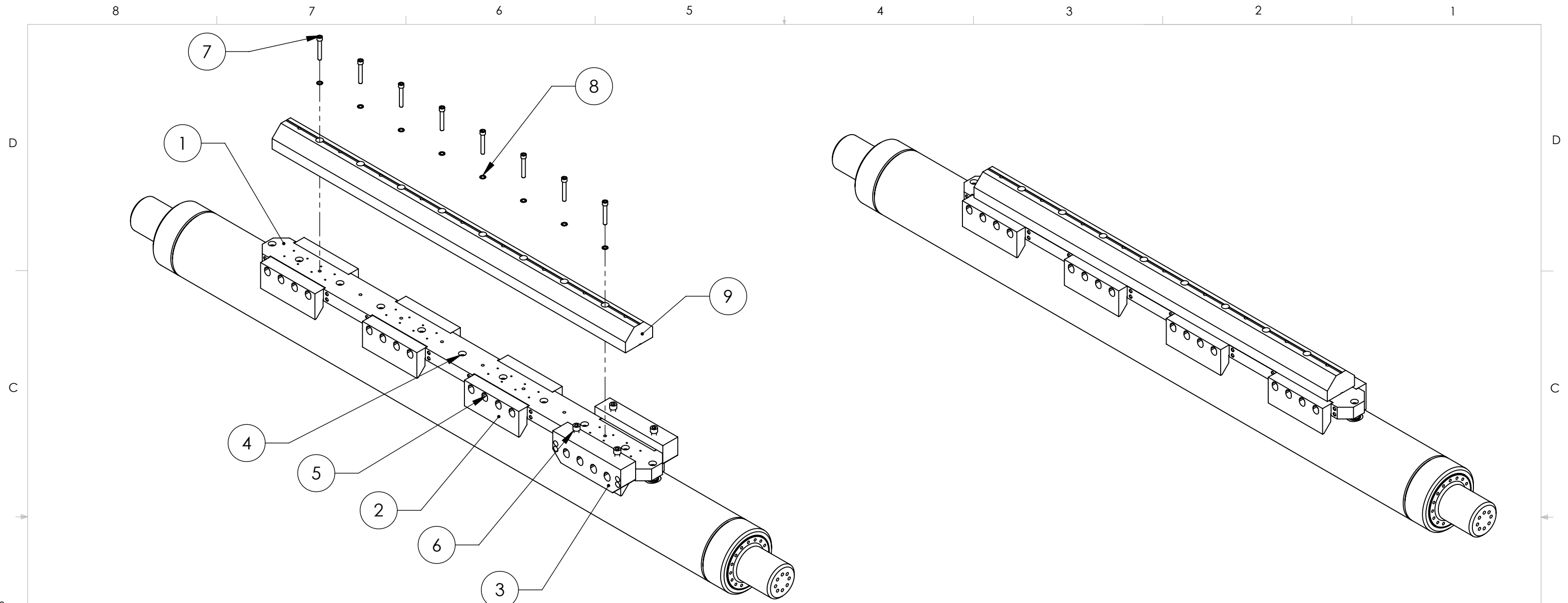


9	UC_COMPONENTS_WFV-38	Washer Vented, .39 ID X .63 OD X .032 THK #3/8"	18-8 SS	51
8	HOLOKROME_78108	SHCS, 3/8"-16x2.5"	18-8 SS	8
7	McMASTER_92196A387	SCREW 1/2-20 X 1 1/2 LG SCHS	18-8 SSTL	4
6	HOLOKROME_78102	SHCS, 3/8"-16x1.5"	18-8 SS	40
5	UCC_C3832-NA	SHCS 3/8"-24 x 2", 18-8, Ag Plate	18-8 SSTL	11
4	D070301	HAM Preloading Tool	6061-T6 Al	2
3	D070302	HAM Tube Bracket	6061-T6 Al	8
2	D1200354	Upper Riser for WHAM-12 ISI aLIGO	6061-T6 Al	1
1	D070301	HAM Lower Riser	AISI 304	1
ITEM NO.	PART NUMBER	DESCRIPTION	MATERIAL	WHAM12/QTY.
PARTS LIST				

SEE E1200291 FOR GENERIC INSTALLATION PROCEDURE.
REFER TO PAGE 2 OF THIS DRAWING FOR A FULLY EXPLODED VIEW

 CALIFORNIA INSTITUTE OF TECHNOLOGY MASSACHUSETTS INSTITUTE OF TECHNOLOGY	
SIZE DWG. NO.	REV.
B	D070300 v2
SCALE: 1:15 PROJECTION:	SHEET 3 OF 4

D070300_HAM_Riser_Assembly, PART PDM REV: X-004, DRAWING PDM REV: X-003



SEE E1200291 FOR GENERIC INSTALLATION PROCEDURE.

REFER TO PAGE 2 OF THIS DRAWING FOR A FULLY EXPLODED VIEW

9	D1200353	Upper Riser for WHAM-6 ISI aLIGO	6061-T6 Al	1
8	UC_COMPONENTS_WFV-38	Washer Vented, .39 ID X .63 OD X .032 THK #3/8"	18-8 SS	51
7	HOLOKROME_78108	SHCS, 3/8"-16x2.5"	18-8 SS	8
6	McMASTER_92196A387	SCREW 1/2-20 X 1 1/2 LG SCHS	18-8 SSTL	4
5	HOLOKROME_78102	SHCS, 3/8"-16x1.5"	18-8 SS	40
4	UCC_C3832-NA	SHCS 3/8"-24 x 2", 18-8, Ag Plate	18-8 SSTL	11
3	D070301	HAM Preloading Tool	6061-T6 Al	2
2	D070302	HAM_Tube_Bracket	6061-T6 Al	8
1	D070301	HAM_Lower_Riser	AISI 304	1
ITEM NO.	PART NUMBER	DESCRIPTION	MATERIAL	WHAM6/QTY.
PARTS LIST				

 CALIFORNIA INSTITUTE OF TECHNOLOGY
 MASSACHUSETTS INSTITUTE OF TECHNOLOGY

SIZE DWG. NO. **B** D070300 REV. v2
 SCALE: 1:15 PROJECTION:  SHEET 4 OF 4