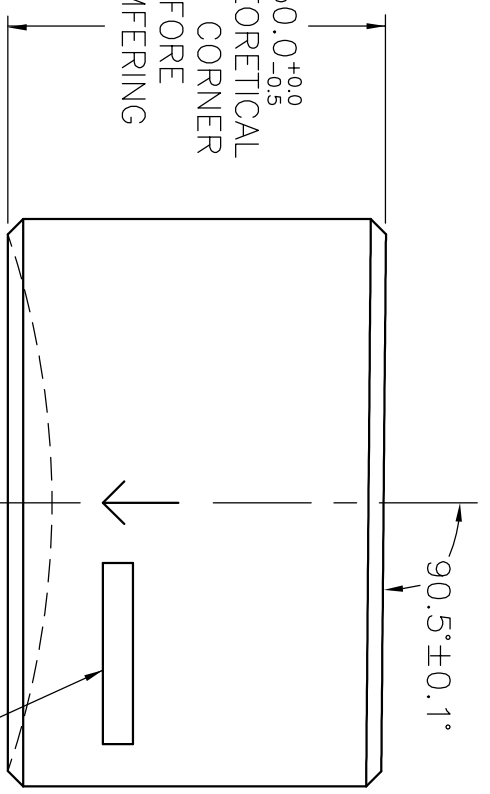


50.0^{+0.0}_{-0.5}
 AT THEORETICAL
 SHARP CORNER
 BEFORE
 CHAMFERING

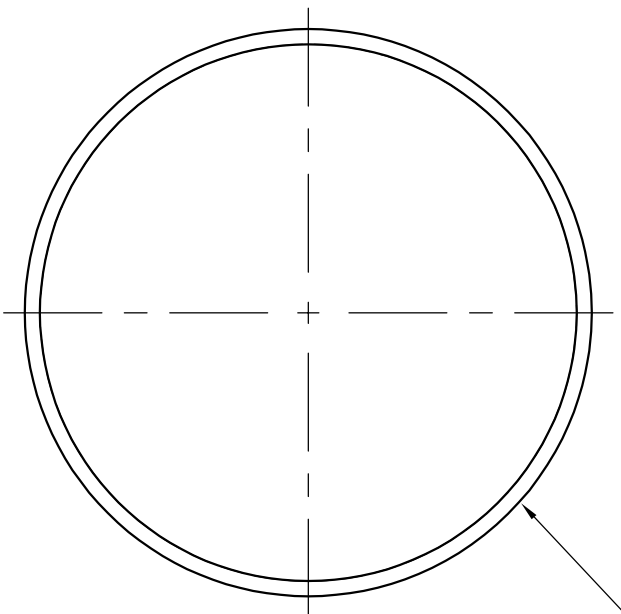


ETCH OR GRIND 0.25mm±0.05mm
 WIDE X 42mm±1mm LONG
 3 PLACES 90°±15' APART FROM
 LINE WITH ARROW (SEE TOP VIEW)
 PARALLEL TO CENTRAL AXIS WITHIN
 ±0.10mm, CENTERED BETWEEN
 FRONT AND REAR SURFACES

ETCH, GRIND, OR SANDBLAST SERIAL
 NUMBER AND ORIENTATION ARROW

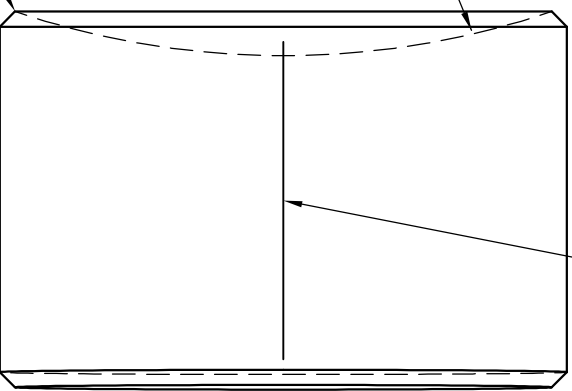
∅75^{+1mm}
_{-0mm}

∅ 0.1mm



R1810±50

CHAMFER
 45°±1° X 2±0.3
 2 PLACES



UF LIGO

WILLIAMS, LUKE

ALIGO TELESCOPE

MIRROR #2 SUBSTRATE

SCALE: FULL (mm)

D070095-00

QTY: 6

DATE: MARCH 26, 2007

MATERIAL: BK7