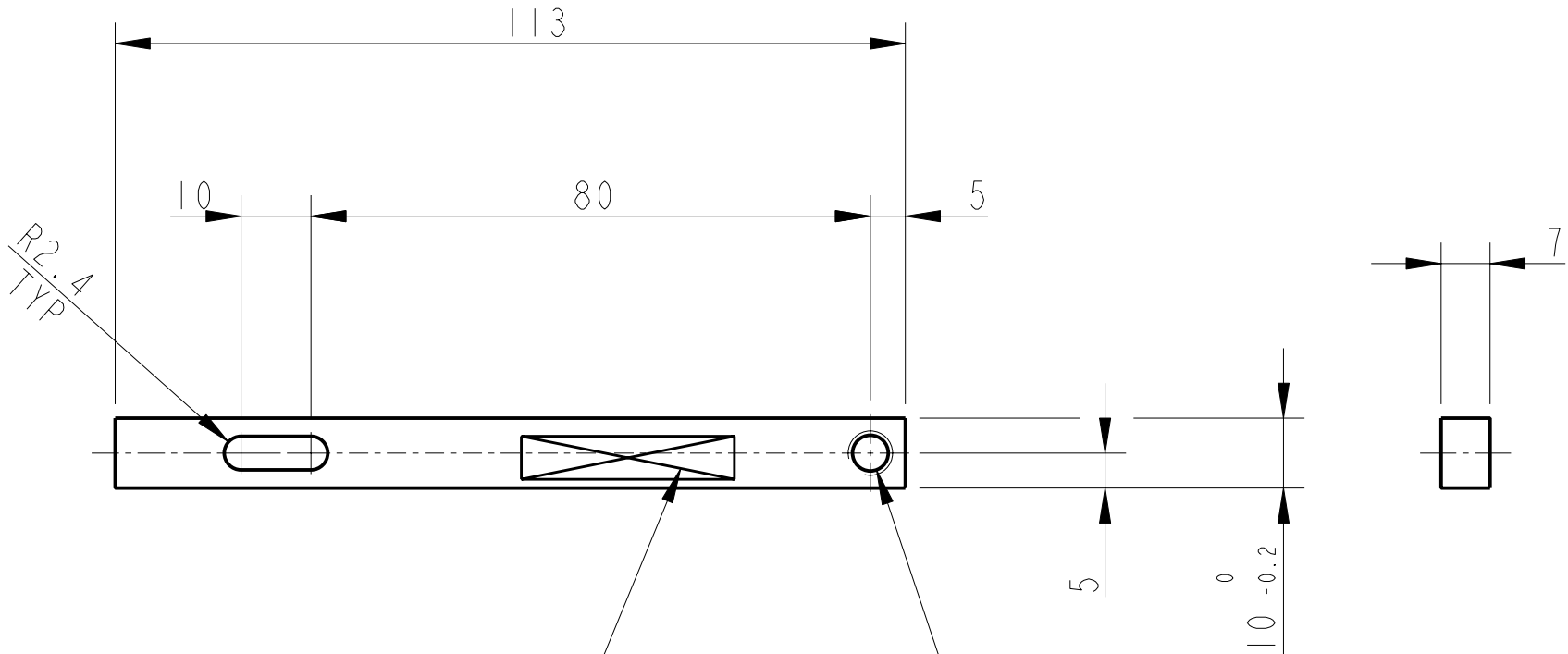




REV.	DATE	DCN #	DRAWING TREE #
A	30-OCT-06	E060260-00	.



PART NO. (SEE NOTE 4)
TO BE ETCHED OR STAMPED
IN APPROX POSITION SHOWN.

1-THRU' HOLE FOR 1/4-20 UNC
X 1.5 D 1g HELICOILS.
HELICOILS NOT TO BE FITTED.

NOTES: (UNLESS OTHERWISE SPECIFIED)		 CALIFORNIA INSTITUTE OF TECHNOLOGY MASSACHUSETTS INSTITUTE OF TECHNOLOGY IGR, GLASGOW UNIVERSITY GEO 600 GROUP RUTHERFORD APPLETON LABORATORIES													
1. REMOVE ALL SHARP EDGES, R.02 MIN. 2. DO NOT SCALE FROM DRAWING. 3. ALL MACHINING FLUIDS SHALL BE WATER SOLUBLE AND FREE OF SULFUR, CHLORINE AND SILICONE, SUCH AS CINCINNATI MILACRON'S CIMTECH 410 (STAINLESS STEEL) 4. SCRIBE, ENGRAVE OR STAMP DRAWING PARTNUMBER ON NOTED SURFACE OF PART AND A THREE DIGIT SERIAL NUMBER. SERIAL NUMBERS START AT 001 FOR THE FIRST PART AND PROCEED CONSECUTIVELY. USE .07" HIGH CHARACTERS. EXAMPLE: D020188- 001. A VIBRATORY TOOL MAY BE USED.		DIMENSIONS ARE IN mm [INCHES] TOLERANCES: X.XX ±0.2 mm ANGULAR ±0.25°													
		MATERIAL: AL. ALLOY 5083 H4 OR 6061													
		FINISH: CLEAN $\sqrt{\mu m}$ [μin] Ra = 1.6													
		<table border="1"> <thead> <tr> <th></th> <th>NAME</th> <th>DATE</th> </tr> </thead> <tbody> <tr> <td>DRAWN</td> <td>NJS/FEL</td> <td>13/JULY/06</td> </tr> <tr> <td>CHECKED</td> <td>J'OD</td> <td>--/--/--</td> </tr> <tr> <td>APPROVED</td> <td>IW</td> <td>--/--/--</td> </tr> </tbody> </table>			NAME	DATE	DRAWN	NJS/FEL	13/JULY/06	CHECKED	J'OD	--/--/--	APPROVED	IW	--/--/--
	NAME	DATE													
DRAWN	NJS/FEL	13/JULY/06													
CHECKED	J'OD	--/--/--													
APPROVED	IW	--/--/--													
		SYSTEM ADVANCED LIGO SUB-SYSTEM SUS NEXT ASSY QUAD N-PTYPE LOWER STRUCTURE PART NAME UI MASS FRONT STOP MOUNT	SIZE A DRG. NO. D060482 SCALE 1:1 PROJECTION: 												
		SHEET 1 OF 1													