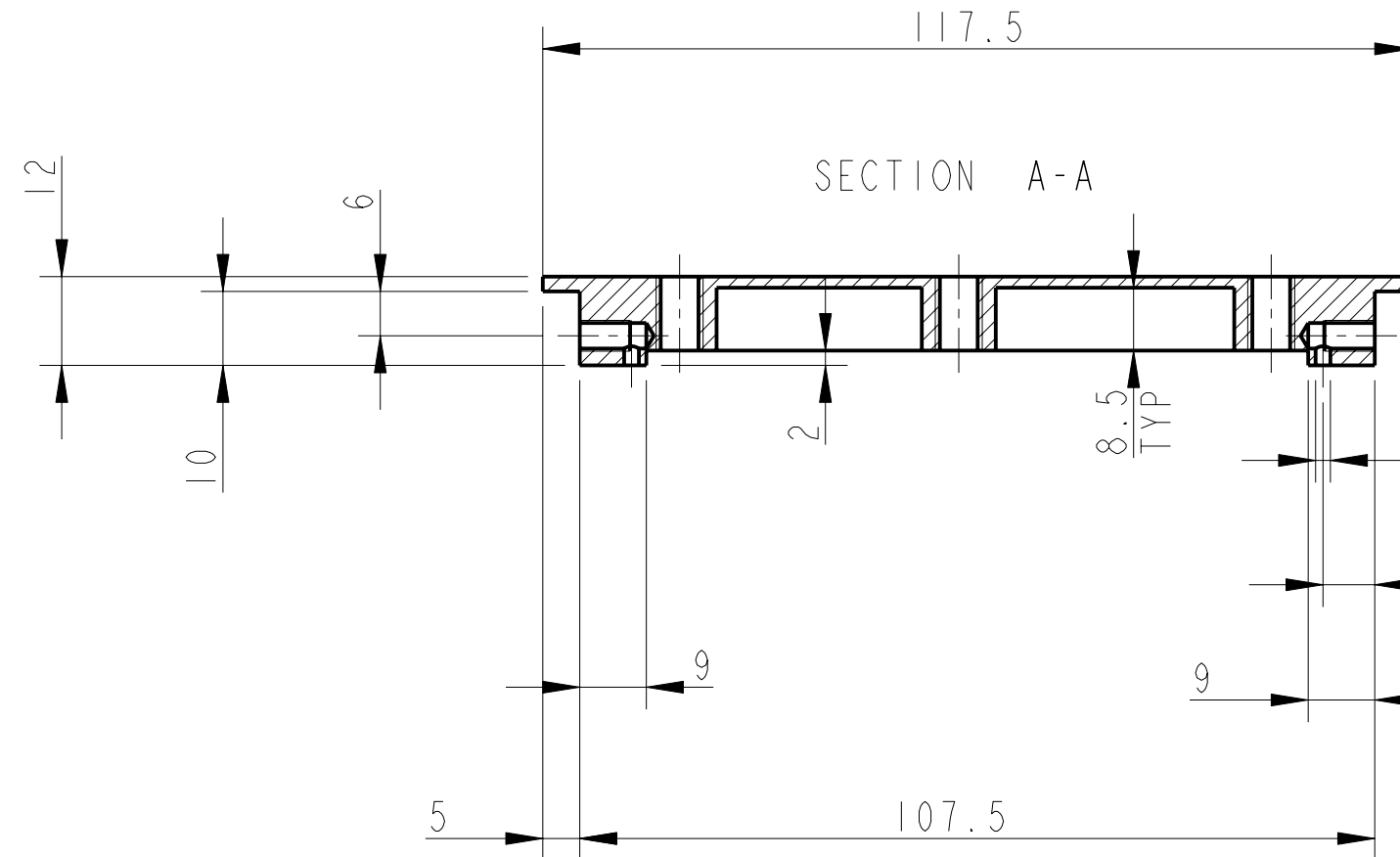


REV.	DATE	DCN #	DRAWING TREE #
A	30-OCT-06	E060260-00	

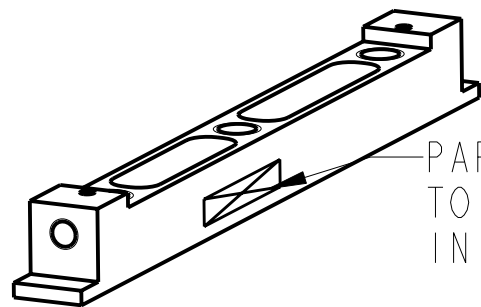
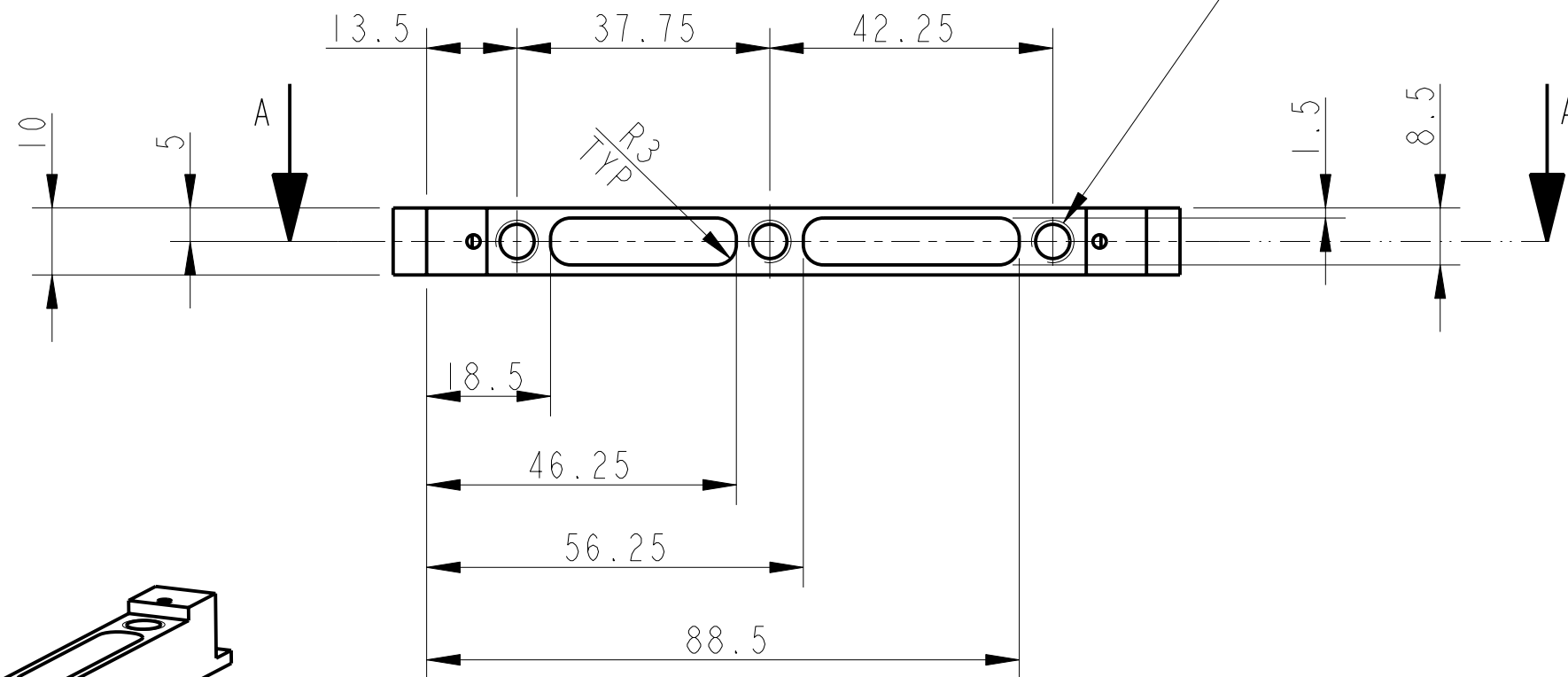


Ø2 VENT HOLE TO BREAK INTO HOLE FOR HELICOIL. (2-POS)

7 (2-POS)

3-THRU' HOLES FOR 1/4-20 UNC X 1.5 D 1g HELICOILS. HELICOILS NOT TO BE FITTED.

2-THRU' HOLES FOR 8-32 UNC X 1.5 D 1g HELICOIL; HELICOIL NOT TO BE FITTED. (SAME OTHER END)



PART NO. (SEE NOTE 4) TO BE ETCHED OR STAMPED IN APPROX POSITION SHOWN.

NOTES: (UNLESS OTHERWISE SPECIFIED)			CALIFORNIA INSTITUTE OF TECHNOLOGY MASSACHUSETTS INSTITUTE OF TECHNOLOGY IGR, GLASGOW UNIVERSITY GEO 600 GROUP RUTHERFORD APPLETON LABORATORIES	
1. REMOVE ALL SHARP EDGES, R.02 MIN.	DIMENSIONS ARE IN mm [INCHES]		SYSTEM ADVANCED LIGO	
2. DO NOT SCALE FROM DRAWING.	TOLERANCES:		SUB-SYSTEM SUS	
3. ALL MACHINING FLUIDS SHALL BE WATER SOLUBLE AND FREE OF SULFUR, CHLORINE AND SILICONE, SUCH AS CINCINNATI MILACRON'S CIMTECH 410 (STAINLESS STEEL)	X.XX ±0.2 mm		NEXT ASSY QUAD N-PTYPE LOWER STRUCTURE	
4. SCRIBE, ENGRAVE OR STAMP DRAWING PART NUMBER ON NOTED SURFACE OF PART AND A THREE DIGIT SERIAL NUMBER. SERIAL NUMBERS START AT 001 FOR THE FIRST PART AND PROCEED CONSECUTIVELY. USE .07" HIGH CHARACTERS. EXAMPLE: D020188- 001. A VIBRATORY TOOL MAY BE USED.	ANGULAR ±0.25 °		PART NAME EARTHQUAKE-STOP MOUNTS-SHORT LOWER STRUCTURE	
	MATERIAL:	AL ALLOY 5083 H4 OR 6061	SIZE B	
	FINISH:	CLEAN	DRG. NO. D060470	
	√μm [μin]	Ro = 1.6	REV A.	
	DRAWN	NJS/FEL 13/JULY/06	SCALE 1:1	
	CHECKED	J'OD --/---/---	PROJECTION:	
	APPROVED	IW 22/MAY.06	SHEET 1 OF 1	