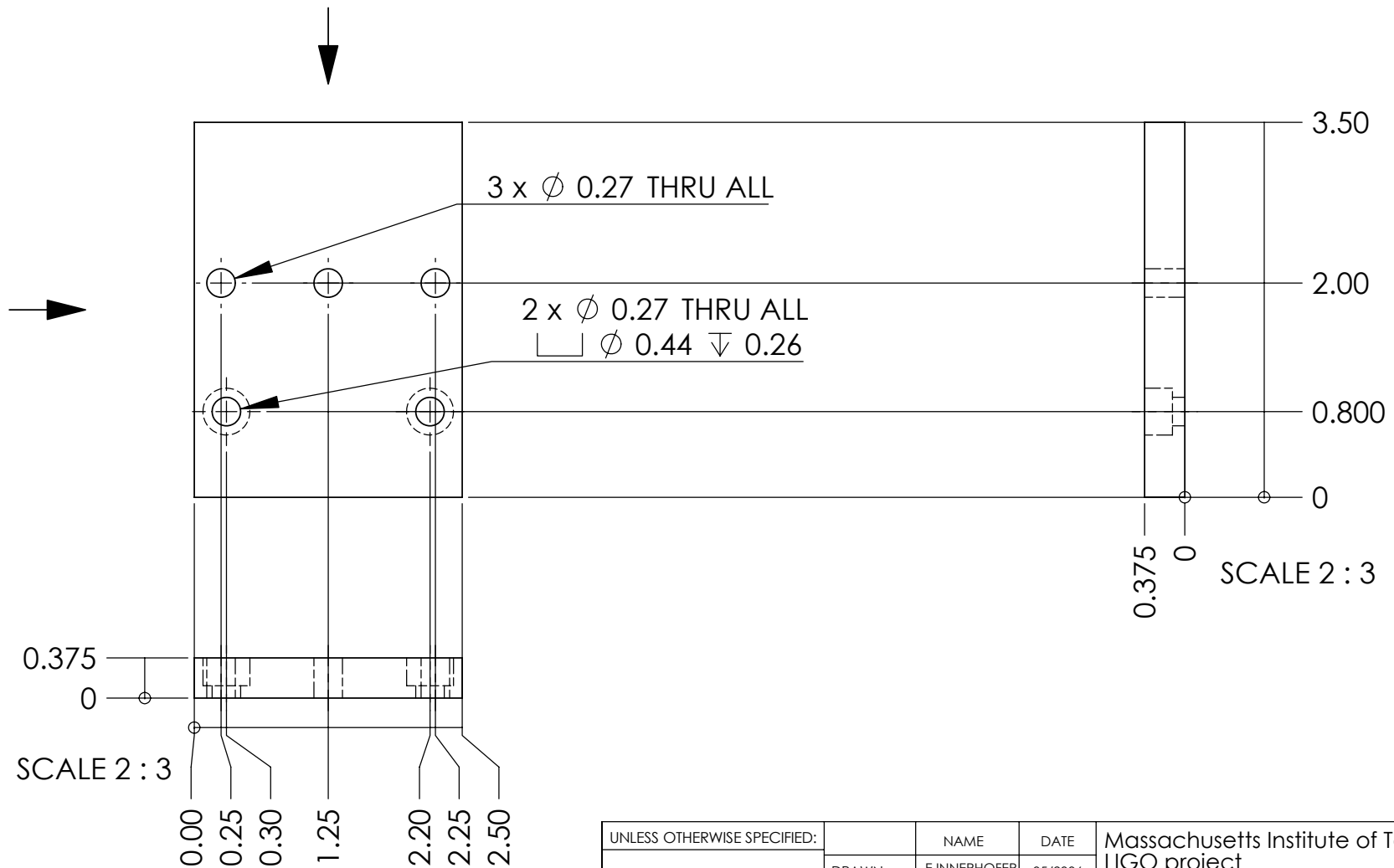


NOTES: (UNLESS OTHERWISE SPECIFIED)

1. BREAK ALL SHARP EDGES .01/.02 X 45°
2. ALL DIMENSIONS IN INCHES



UNLESS OTHERWISE SPECIFIED:		NAME	DATE	Massachusetts Institute of Technology LIGO project	
DIMENSIONS ARE IN INCHES TOLERANCES ARE: ± 5/1000 INCH ANGULAR: ± .25°	DRAWN	E.INNERHOFER	05/2006	TITLE: 25pin in-vacuum D-sub holder base plate	
	CHECKED				
	ENG APPR.				
INTERPRET GEOMETRIC TOLERANCING PER:					
MATERIAL Aluminum	COMMENTS:			SIZE A	DWG. NO. LIGO-D060176-00-R
FINISH 64/					REV 00
DO NOT SCALE DRAWING				SCALE: 2:3	SHEET 1 OF 1