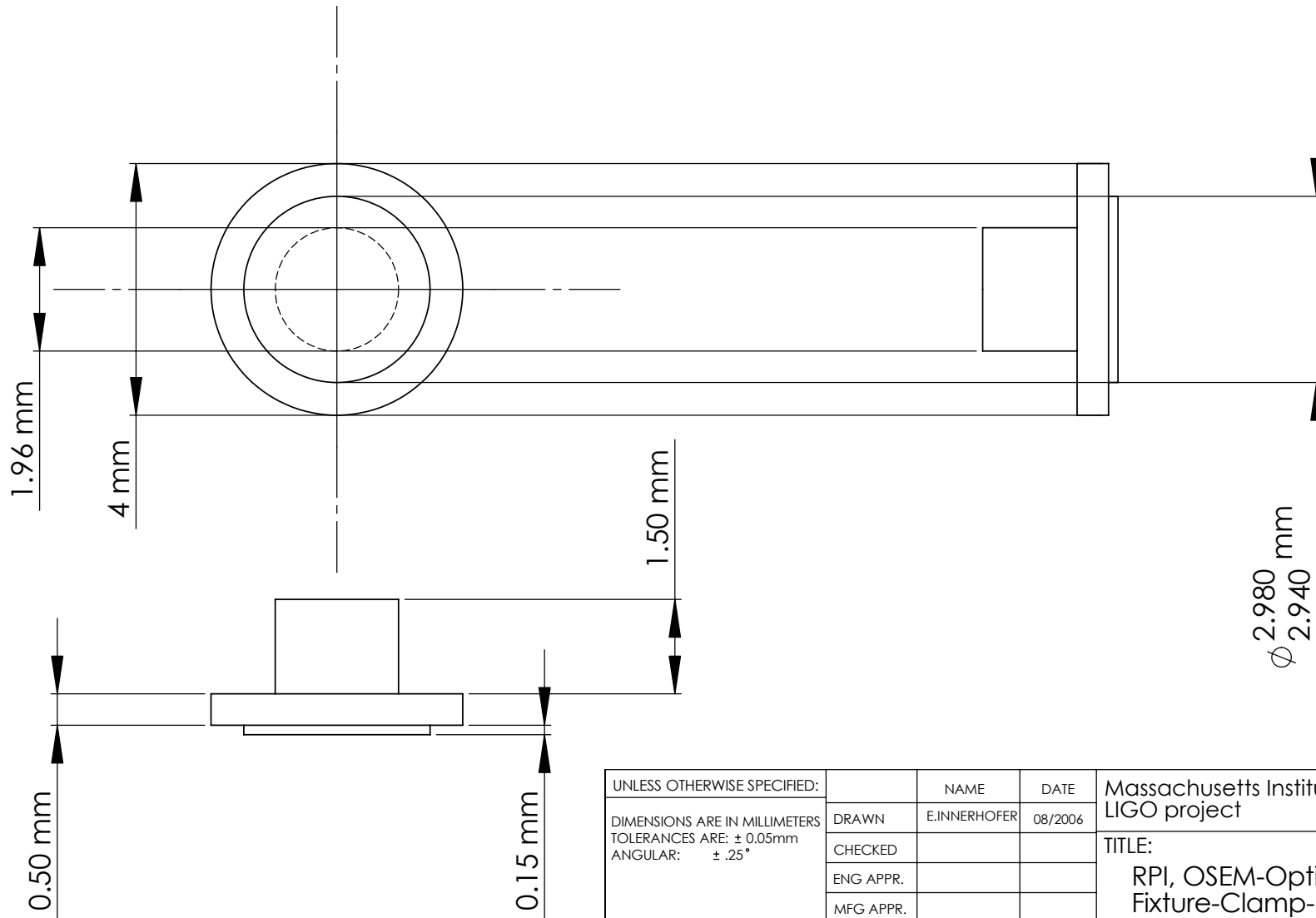


NOTES: (UNLESS OTHERWISE SPECIFIED)

1. BREAK ALL SHARP EDGES .2/.5 mm X 45°
2. ALL DIMENSIONS IN MILLIMETER



UNLESS OTHERWISE SPECIFIED:		NAME	DATE	Massachusetts Institute of Technology LIGO project	
DIMENSIONS ARE IN MILLIMETERS TOLERANCES ARE: ± 0.05mm ANGULAR: ± .25°	DRAWN	E.INNERHOFER	08/2006	TITLE:	
	CHECKED			RPI, OSEM-Optics-Gluing- Fixture-Clamp-Inset	
	ENG APPR.			SIZE	DWG. NO.
	MFG APPR.			A	LIGO-D060174-02-R
INTERPRET GEOMETRIC TOLERANCING PER:	Q.A.			REV	02
MATERIAL Aluminum	COMMENTS:			SCALE: 10:1	SHEET 1 OF 1
FINISH 64/					
DO NOT SCALE DRAWING					