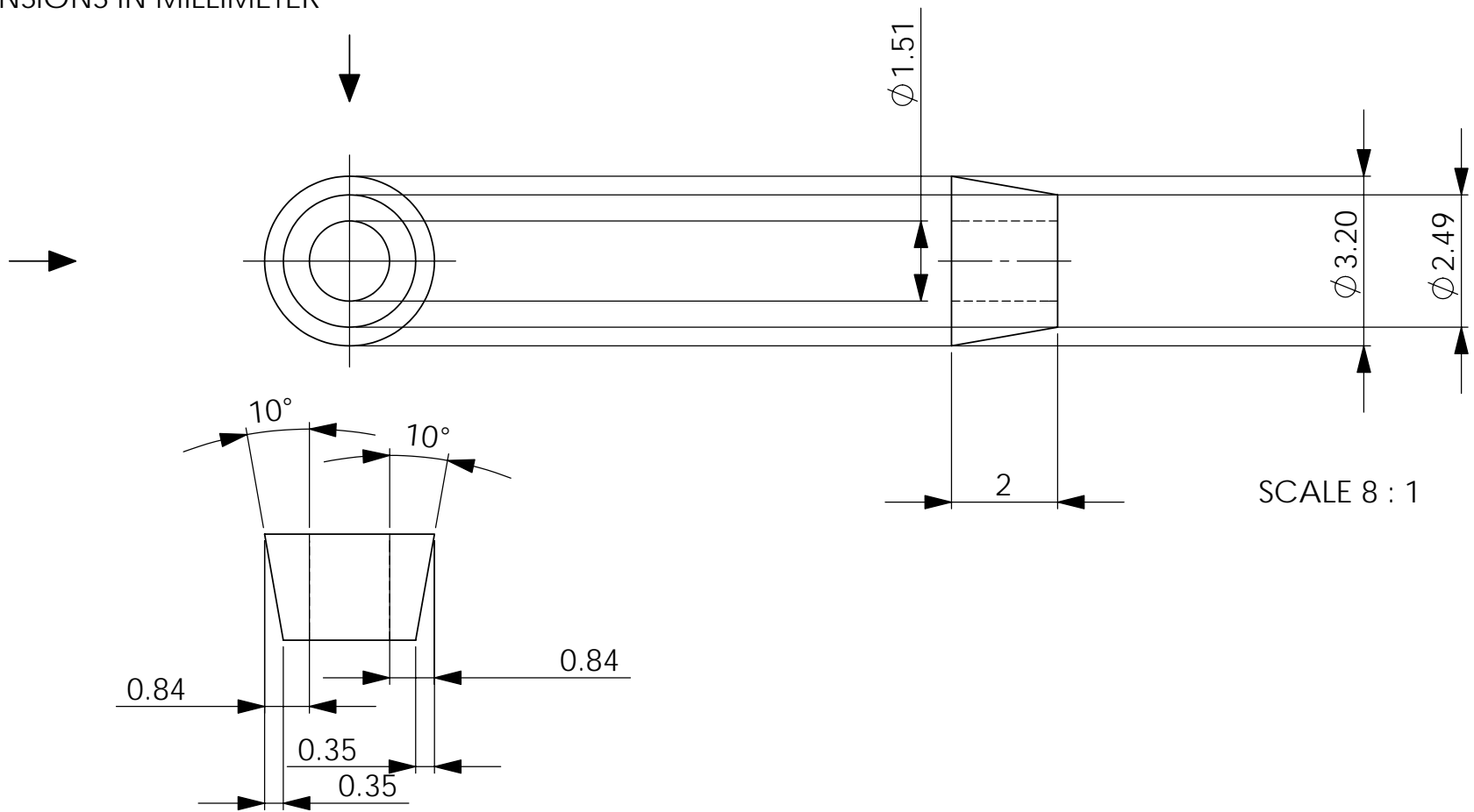


NOTES: (UNLESS OTHERWISE SPECIFIED)

1. BREAK ALL SHARP EDGES .2/.5 X 45°
2. ALL DIMENSIONS IN MILLIMETER



SCALE 8 : 1

SCALE 8 : 1

UNLESS OTHERWISE SPECIFIED:		NAME	DATE	Massachusetts Institute of Technology LIGO project										
DIMENSIONS ARE IN MILLIMETERS TOLERANCES ARE: $\pm 0.05\text{mm}$ ANGULAR: $\pm .25^\circ$	DRAWN	E.INNERHOFER	05/2006	TITLE: RPI, OSEM-Optics-Gluing- Fixture-Clamp-Inset										
	CHECKED													
	ENG APPR.													
INTERPRET GEOMETRIC TOLERANCING PER:				<table border="1"> <tr> <td>SIZE</td> <td>DWG. NO.</td> <td>REV</td> </tr> <tr> <td>A</td> <td>LIGO-D060174-00-R</td> <td>00</td> </tr> <tr> <td colspan="2">SCALE: 8:1</td> <td>SHEET 1 OF 1</td> </tr> </table>		SIZE	DWG. NO.	REV	A	LIGO-D060174-00-R	00	SCALE: 8:1		SHEET 1 OF 1
SIZE	DWG. NO.	REV												
A	LIGO-D060174-00-R	00												
SCALE: 8:1		SHEET 1 OF 1												
MATERIAL Aluminum	COMMENTS:													
FINISH \checkmark ₆₄														
DO NOT SCALE DRAWING														