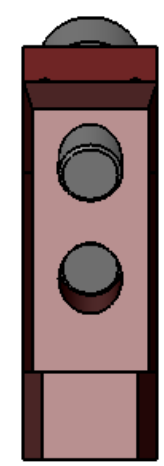
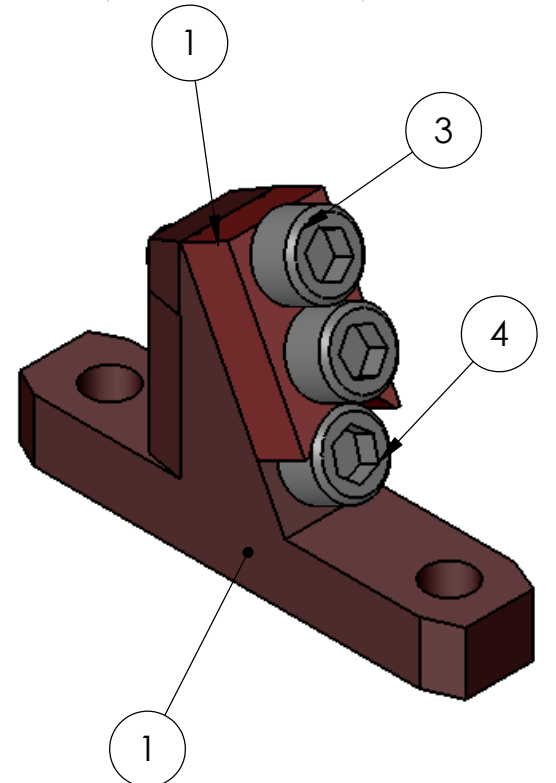
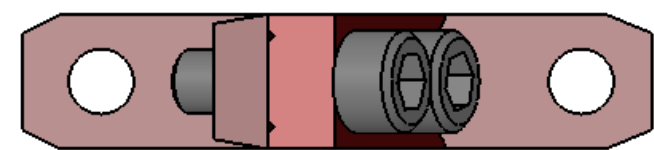
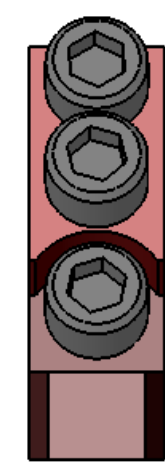
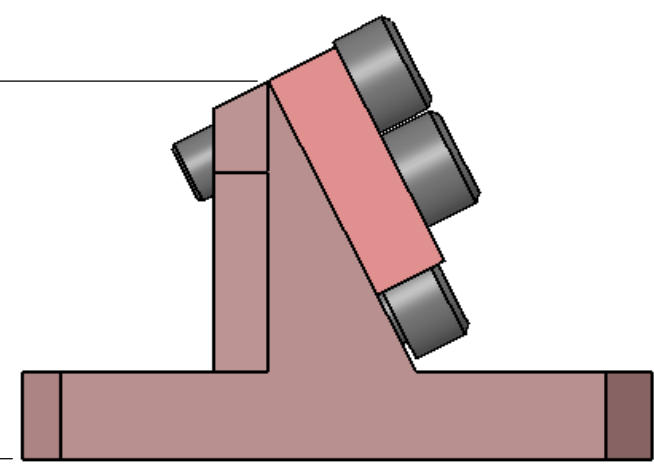


REV.	DATE	DCN #	DRAWING TREE #
A	MAR 23 2006	E060057-00	E060059-A



24.98
.98



ITEM NO.	REQ	SPARE	TOTAL	PART NUMBER	DESCRIPTION	MATERIAL
4	1	1	2	--	SST SOCKET HEAD CAP SCREW #8-32 UNC-2A X 0.25 LONG	300 SSTL
3	2	2	4	--	SST SOCKET HEAD CAP SCREW #8-32 UNC-2A X 0.5 LONG	300 SSTL
2	1	2	3	D050334	U-I WIRE CLAMP PLATE	303/304 SST
1	1	1	2	D050333	U-I WIRE CLAMP MAIN BODY	303/304 SST

PARTS LIST

NOTES: (UNLESS OTHERWISE SPECIFIED)

- DO NOT SCALE FROM DRAWING.
- REMOVE ALL SHARP EDGES, R.02 MAX.
- ALL MACHINING FLUIDS SHALL BE WATER SOLUBLE AND FREE OF SULFUR, CHLORINE AND SILICONE.
- SCRIBE, ENGRAVE OR MECHANICALLY STAMP DRAWING (NO INKS OR DYES) PART NUMBER, REVISION ON NOTED SURFACE OF PART FOLLOWED ON THE NEXT LINE WITH A THREE DIGIT SERIAL NUMBER. SERIAL NUMBERS START AT 001 FOR THE FIRST ARTICLE AND PROCEED CONSECUTIVELY. USE .12" HIGH CHARACTERS, UNLESS THE SIZE OF THE PART DICTATES SMALL CHARACTERS. A VIBRATORY TOOL MAY BE USED, EXAMPLE: D050XXX-A S/N 001

DIMENSIONS ARE IN INCHES		
TOLERANCES: .XX ± 0.01 .XXX ± 0.005		
ANGULAR ± 0.5 °		
MATERIAL --		
FINISH -- μ inch		
	NAME	DATE
DRAWN	C. TORRIE	DEC 2005
CHECKED		
APPROVED		

LIGO CALIFORNIA INSTITUTE OF TECHNOLOGY
MASSACHUSETTS INSTITUTE OF TECHNOLOGY
IGR, GLASGOW UNIVERSITY GEO 600 GROUP

SYSTEM **ADVANCED LIGO**

SUB-SYSTEM **SUS**

NEXT ASSY **D040350 & D040360**

PART NAME **ALT CLAMP FOR UI MASS AS USED IN LASTI**

SIZE	DWG. NO.	REV.
B	D060095	A

SCALE: 2:1 PROJECTION: SHEET 1 OF 1