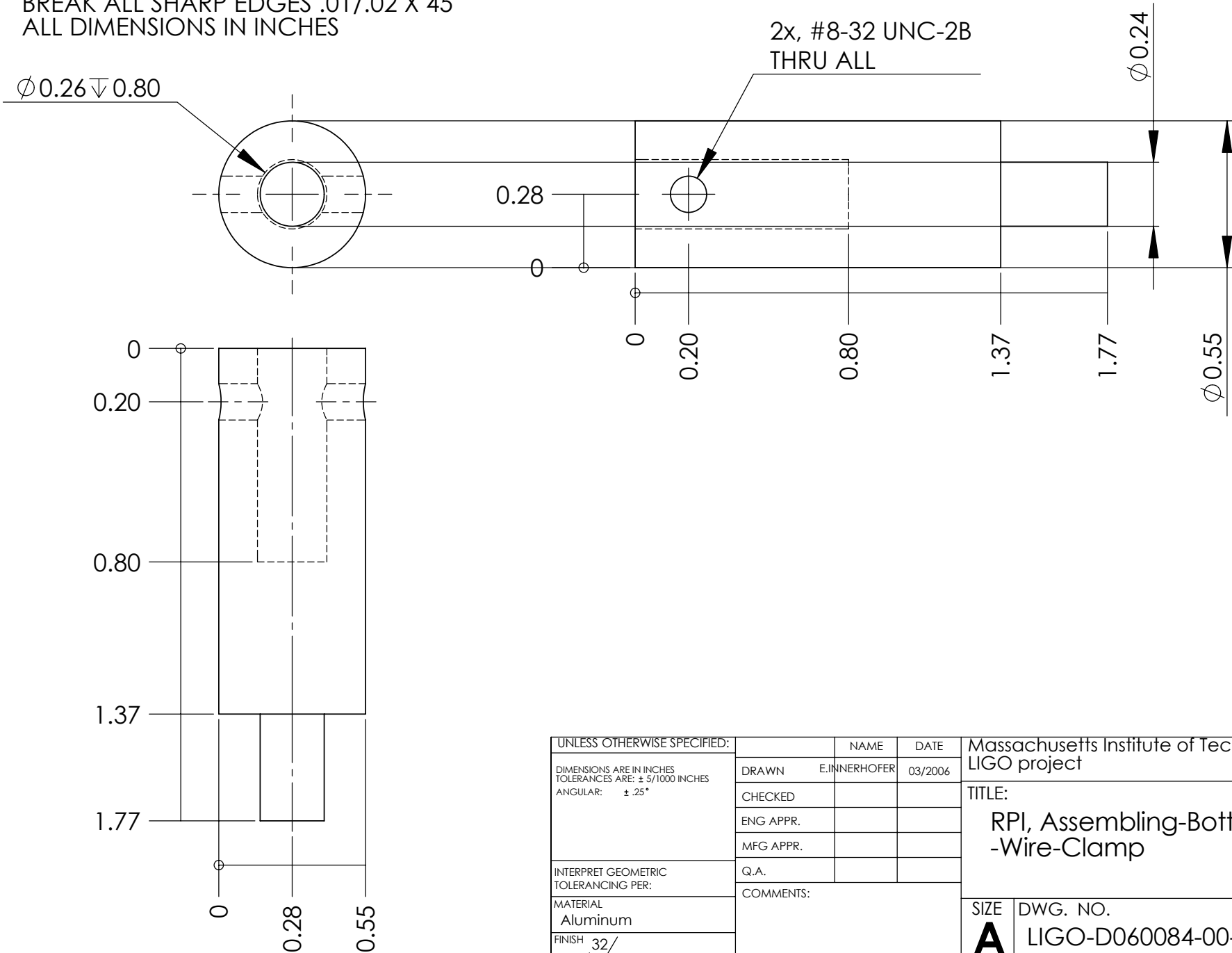


NOTES: (UNLESS OTHERWISE SPECIFIED)

1. BREAK ALL SHARP EDGES .01/.02 X 45°
2. ALL DIMENSIONS IN INCHES



UNLESS OTHERWISE SPECIFIED:		NAME	DATE	Massachusetts Institute of Technology LIGO project		
DIMENSIONS ARE IN INCHES TOLERANCES ARE: $\pm 5/1000$ INCHES ANGULAR: $\pm .25^\circ$	DRAWN	E. INNERHOFER	03/2006	TITLE: RPI, Assembling-Bottom -Wire-Clamp		
	CHECKED					
	ENG APPR.					
	MFG APPR.					
INTERPRET GEOMETRIC TOLERANCING PER:	Q.A.			SIZE DWG. NO. REV A LIGO-D060084-00-R		
MATERIAL Aluminum	COMMENTS:		SCALE: 2:1			
FINISH 32/ √						SHEET 1 OF 1
DO NOT SCALE DRAWING						