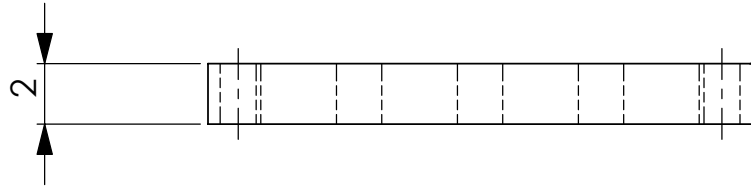
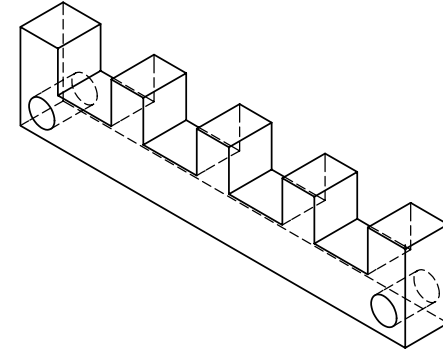


NOTES: (UNLESS OTHERWISE SPECIFIED)

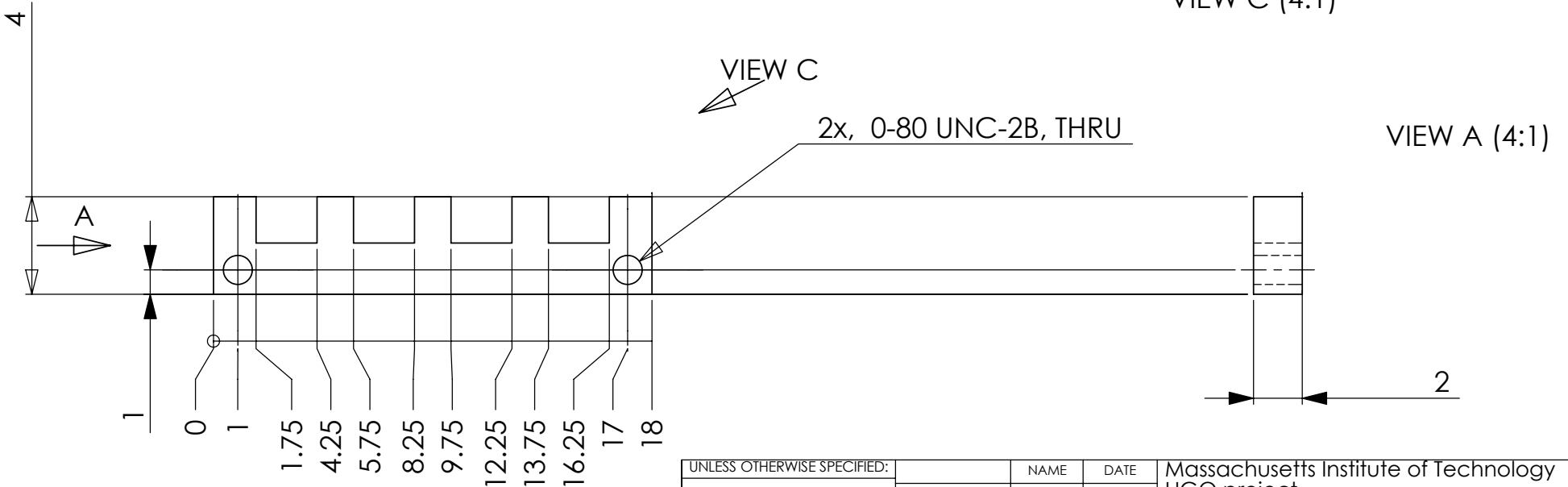
1. BREAK ALL SHARP EDGES .01/.02 X 45°
2. ALL DIMENSIONS IN MILLIMETER

Quantity: 2  
 Contact: Edith Innerhofer  
 edith@ligo.mit.edu  
 617 452-3156



VIEW B (4:1)

VIEW C (4:1)



UNLESS OTHERWISE SPECIFIED:		NAME	DATE	Massachusetts Institute of Technology LIGO project	
DIMENSIONS ARE IN MILLIMETERS TOLERANCES ARE: ± 0.05mm ANGULAR: ± .25°		DRAWN	E.INNERHOFER	02/2006	TITLE: RPI, Soldering Mask, LED packages, 1g mirror
INTERPRET GEOMETRIC TOLERANCING PER:		CHECKED			
MATERIAL Aluminum		ENG APPR.			
FINISH 32/		MFG APPR.			
DO NOT SCALE DRAWING		COMMENTS:		Q.A.	
		SIZE	DWG. NO.		REV
		<b>A</b>	LIGO-D060063-00-R		
		SCALE: 3:1			SHEET 1 OF 1