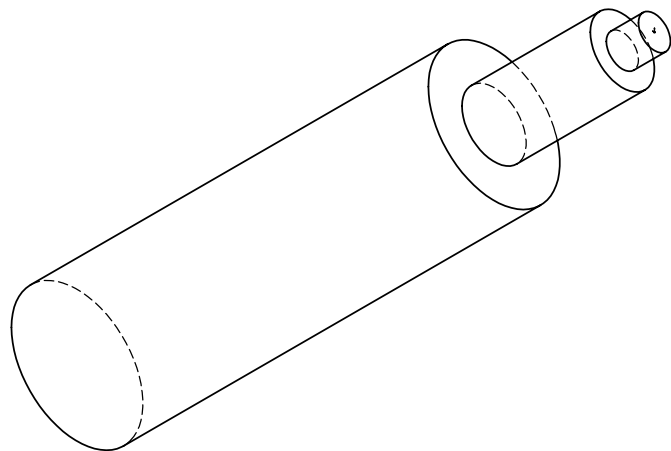
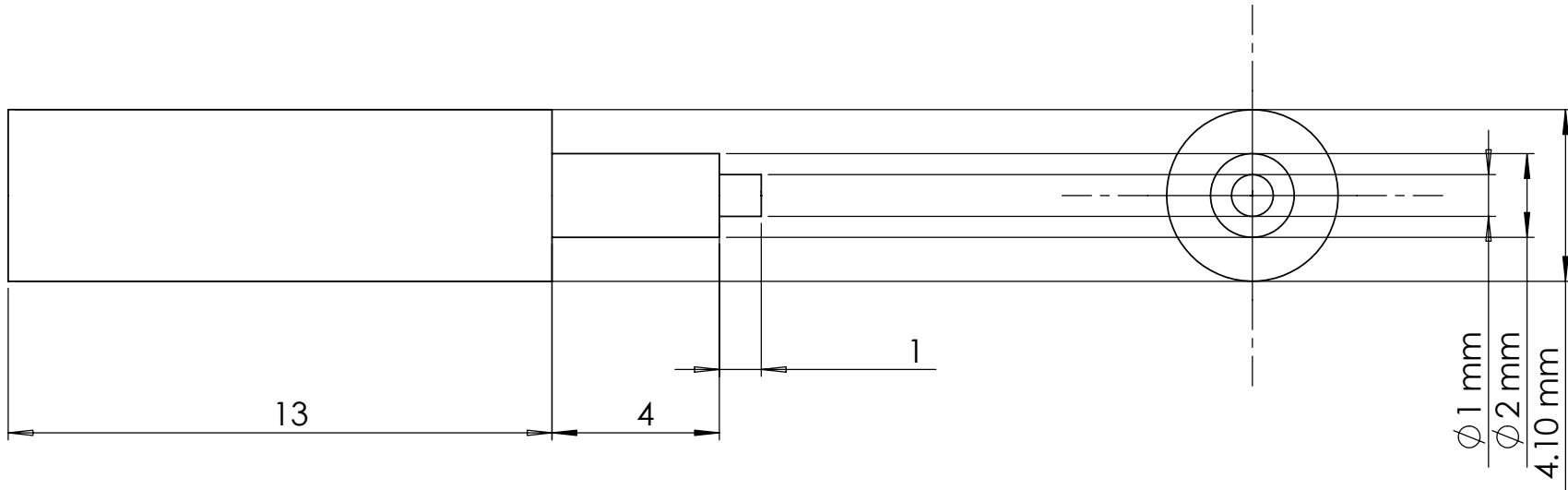


- NOTES: (UNLESS OTHERWISE SPECIFIED)
- BREAK ALL SHARP EDGES .2/.5 X 45°
 - ALL DIMENSIONS IN MILLIMETER



UNLESS OTHERWISE SPECIFIED:		NAME	DATE	Massachusetts Institute of Technology LIGO project							
DIMENSIONS ARE IN MILLIMETERS TOLERANCES ARE: ± 0.05mm ANGULAR: ± .25°	DRAWN	E.INNERHOFER	04/2006	TITLE: RPI, Magnet-Applicator, 1g mirror							
	MODIFIED	E.INNERHOFER	06/2006								
	ENG APPR.										
	MFG APPR.										
INTERPRET GEOMETRIC TOLERANCING PER:	Q.A.			<table border="1"> <tr> <td>SIZE</td> <td>DWG. NO.</td> <td>REV</td> </tr> <tr> <td>A</td> <td>LIGO-D060062-03-R</td> <td>03</td> </tr> </table>		SIZE	DWG. NO.	REV	A	LIGO-D060062-03-R	03
SIZE	DWG. NO.	REV									
A	LIGO-D060062-03-R	03									
MATERIAL Aluminum	COMMENTS:										
FINISH 6A/√											
DO NOT SCALE DRAWING				SCALE: 6:1	SHEET 1 OF 1						