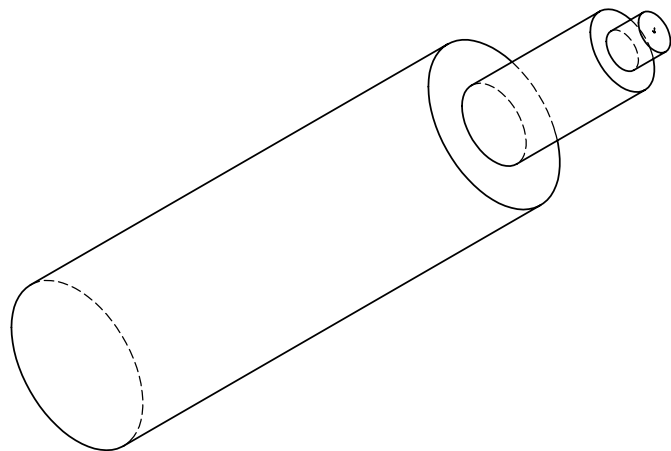
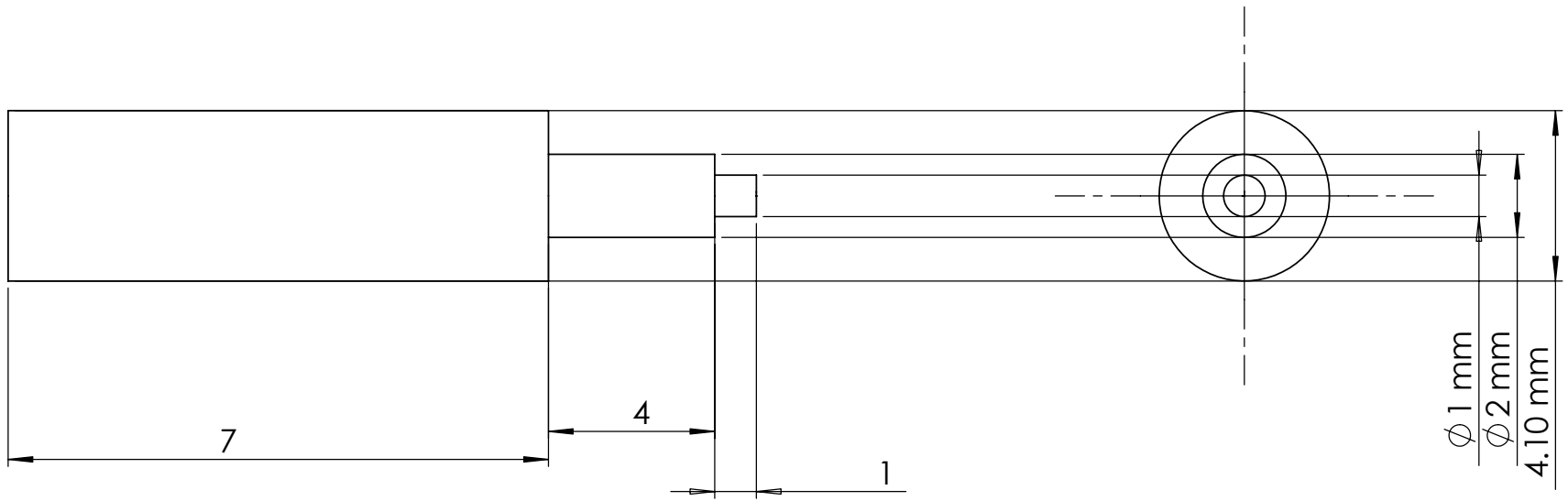


- NOTES: (UNLESS OTHERWISE SPECIFIED)
- BREAK ALL SHARP EDGES .2/.5 X 45°
 - ALL DIMENSIONS IN MILLIMETER



UNLESS OTHERWISE SPECIFIED:		NAME	DATE	Massachusetts Institute of Technology LIGO project										
DIMENSIONS ARE IN MILLIMETERS TOLERANCES ARE: ± 0.05mm ANGULAR: ± .25°	DRAWN	E.INNERHOFER	04/2006	TITLE: RPI, Magnet-Applicator, 1g mirror										
	MODIFIED	E.INNERHOFER	06/2006											
	ENG APPR.													
	MFG APPR.													
INTERPRET GEOMETRIC TOLERANCING PER:	Q.A.			<table border="1"> <tr> <td>SIZE</td> <td>DWG. NO.</td> <td>REV</td> </tr> <tr> <td>A</td> <td>LIGO-D060062-02-R</td> <td>02</td> </tr> <tr> <td colspan="2">SCALE: 6:1</td> <td>SHEET 1 OF 1</td> </tr> </table>		SIZE	DWG. NO.	REV	A	LIGO-D060062-02-R	02	SCALE: 6:1		SHEET 1 OF 1
SIZE	DWG. NO.	REV												
A	LIGO-D060062-02-R	02												
SCALE: 6:1		SHEET 1 OF 1												
MATERIAL Aluminum	COMMENTS:													
FINISH 64/														
DO NOT SCALE DRAWING														