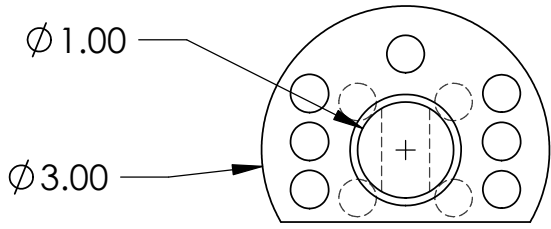
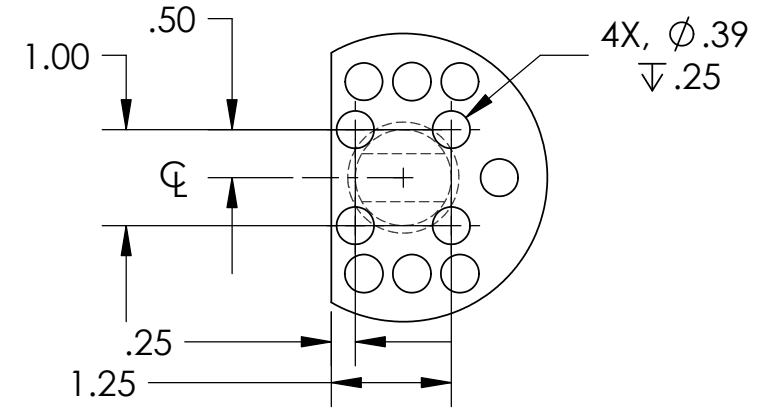
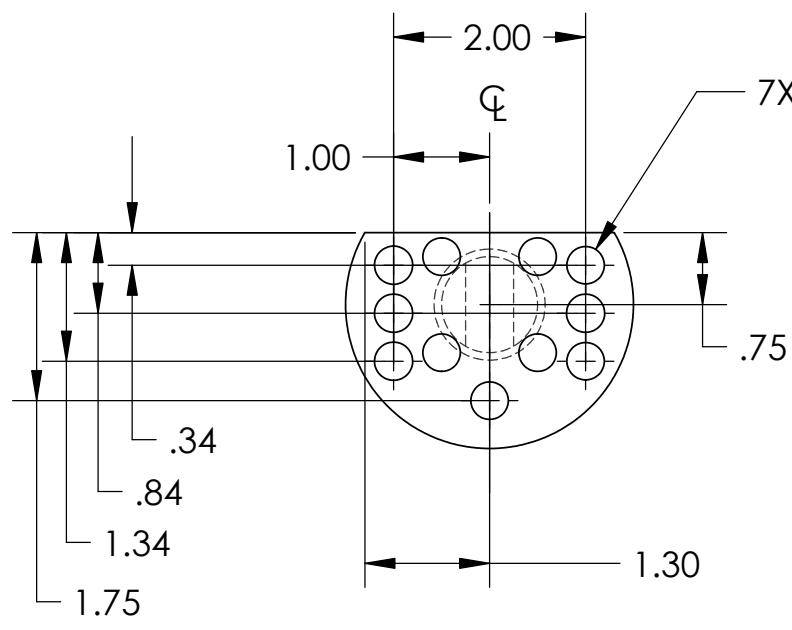
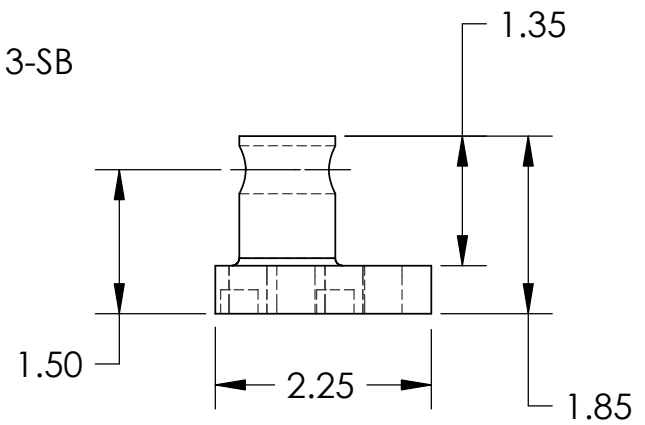
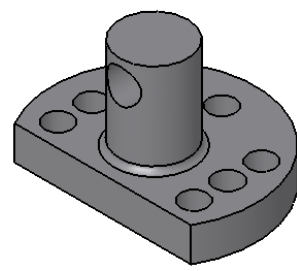
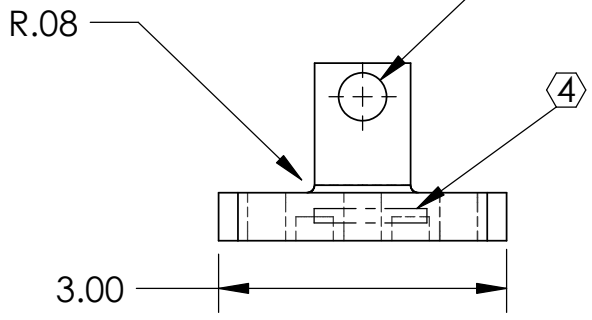


REV.	DATE	DCN #	DRAWING TREE #
A	MAR 23 2006	E060057-00	E060059-A



DRILL AND TAP FOR A
1/2-13 N60 INSERT, AS SUPPLIED.
USE FAIRLINE 1/2-13 X 3" LONG
BALL SCREW

Fairline Products Inc #TST-0510 X 3-SB



NOTES: (UNLESS OTHERWISE SPECIFIED)

- DO NOT SCALE FROM DRAWING.
- REMOVE ALL SHARP EDGES, R.02 MAX.
- ALL MACHINING FLUIDS SHALL BE WATER SOLUBLE AND FREE OF SULFUR, CHLORINE AND SILICONE.

④ SCRIBE, ENGRAVE OR MECHANICALLY STAMP DRAWING (NO INKS OR DYES) PART NUMBER, REVISION ON NOTED SURFACE OF PART FOLLOWED ON THE NEXT LINE WITH A THREE DIGIT SERIAL NUMBER. SERIAL NUMBERS START AT 001 FOR THE FIRST ARTICLE AND PROCEED CONSECUTIVELY. USE .12" HIGH CHARACTERS, UNLESS THE SIZE OF THE PART DICTATES SMALL CHARACTERS. A VIBRATORY TOOL MAY BE USED. EXAMPLE: D050XXX-A S/N 001

DIMENSIONS ARE IN INCHES		
TOLERANCES: .XX ± 0.01 .XXX ± 0.005		
ANGULAR ± 0.5 °		
MATERIAL AL		
FINISH 32 μ inch		
DRAWN	NAME	DATE
CHECKED		
APPROVED		
	C Torrie	Feb 9th 2006

LIGO CALIFORNIA INSTITUTE OF TECHNOLOGY
MASSACHUSETTS INSTITUTE OF TECHNOLOGY
IGR, GLASGOW UNIVERSITY GEO 600 GROUP

SYSTEM	ADVANCED LIGO
SUB-SYSTEM	SUS
NEXT ASSY	INSTALL FIXTURES
PART NAME	QUAD PUSHERS
SIZE	DWG. NO.
A	D060052
SCALE:	NTS
PROJECTION:	⊗ ↺
SHEET	1 OF 1

REV. A