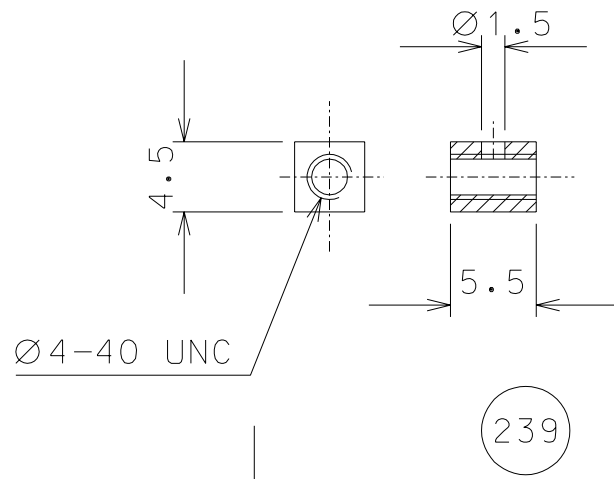
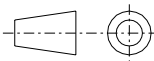


239	X	AISI 304	2/1
ref.	pieces	mat. and treatments	scale



General machining tolerances UNI 5307-63								
Dimensions	< 6	> 6-30	> 30-120	> 120-315	> 315-1000	> 1000-2000	> 2000-4000	> 4000
linear Toll.	± 0.1	± 0.2	± 0.3	± 0.5	± 0.8	± 1.2	± 2	± 3
angular Toll.	± 1	± 30'	± 20'	± 10' referred to the shortest side				

	<b>LIGO PROJECT</b>		designed for <b>R.De Salvo</b>	
	<b>title</b> HAM OPTICAL BENCH CONNECTOR		draw. by <b>G.Gennaro-PROMEC</b>	
		date 04-06-06	scale 1/1	
		LIGO-D051220-00-D		
		detail from		A 4