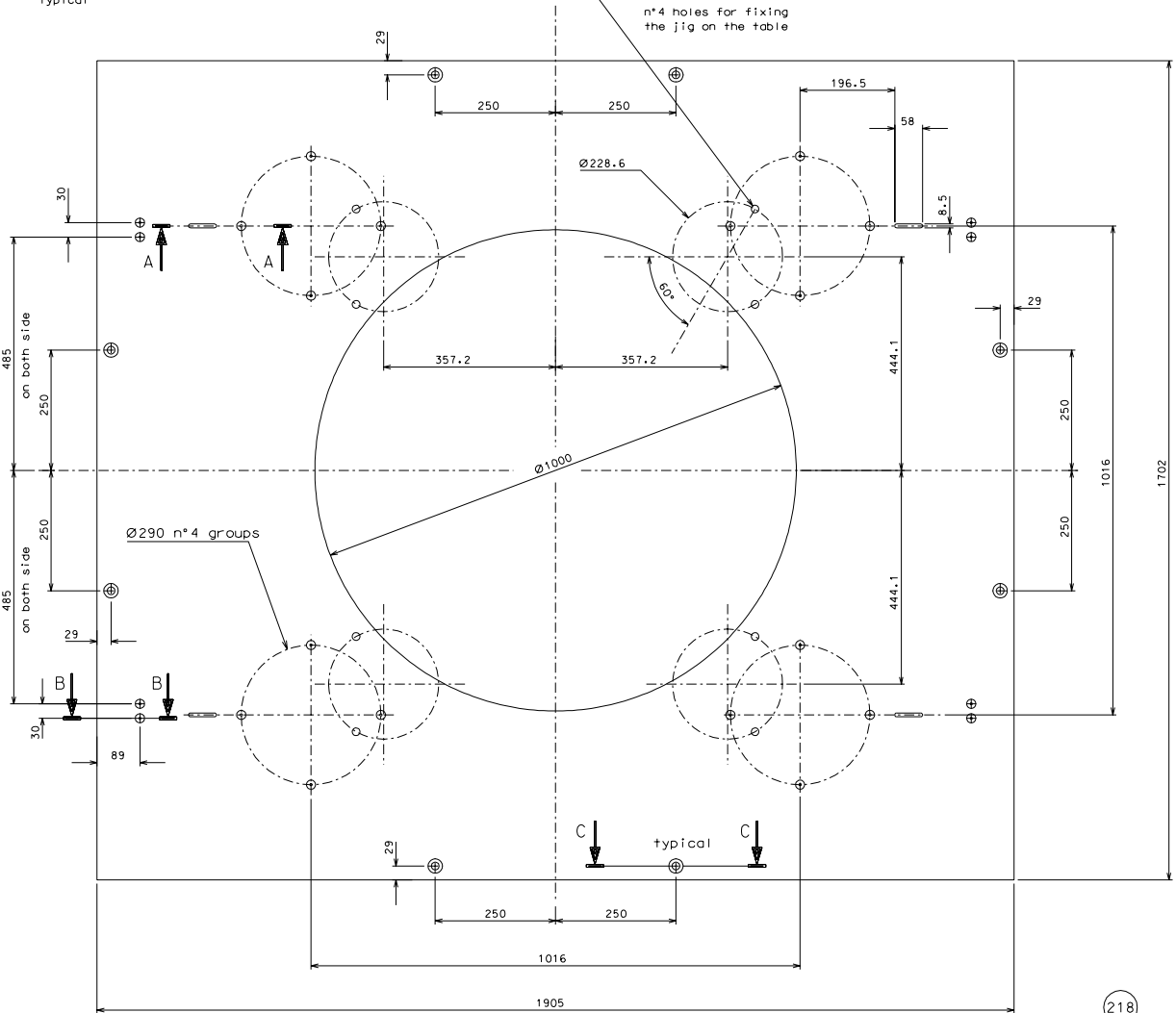
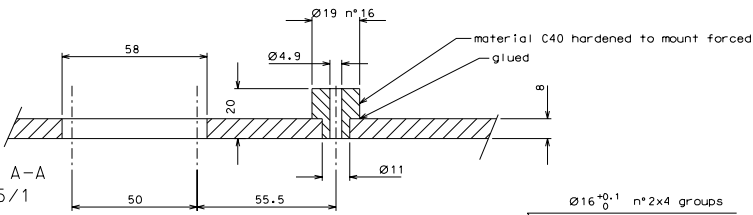
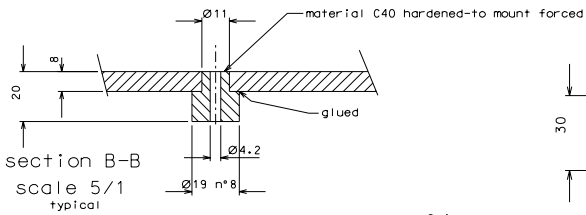


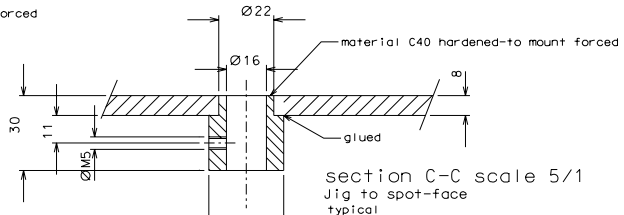
section A-A  
scale 5/1  
typical



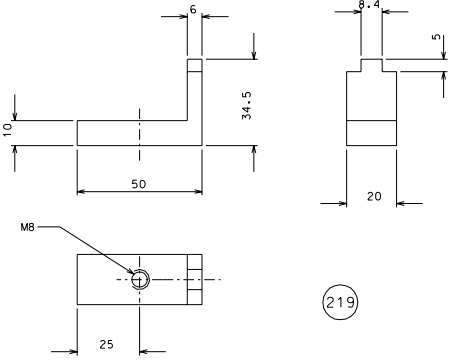
(218)



section B-B  
scale 5/1  
typical



section C-C scale 5/1  
Jig to spot-face  
typical



(219)

(218.1)

Jig to drill for holes M8

added n° parts of sect. B-B		28-04-06		
ref.	qnt	date	signature	
modifications				
219	4	EN 6082	1/1	
218.1	8	C40 hardened	1/5	
218	1	EN 6082	1/5	
ref.	pieces	mat. and treatments	scale	

General machining tolerances UNI 5307-83										
Dimension	<math>\le 6</math>	<math>6-30</math>	<math>30-120</math>	<math>120-315</math>	<math>315-1000</math>	<math>1000-2000</math>	<math>2000-4000</math>	> 4000		
Linear tol.	$\pm 0.1$	$\pm 0.2$	$\pm 0.3$	$\pm 0.5$	$\pm 0.8$	$\pm 1.2$	$\pm 2$	$\pm 3$		
Angular tol.	$\pm 1'$	$\pm 30'$	$\pm 20'$	$\pm 10'$						

designed by	R. De Salvo
checked by	G. Gennaro-PROMEC
date	9-02-06
scale	1/5
title	LIGO-OPTICAL BENCH
	JIG TO DRILL OLD TABLE
sheet	A 1