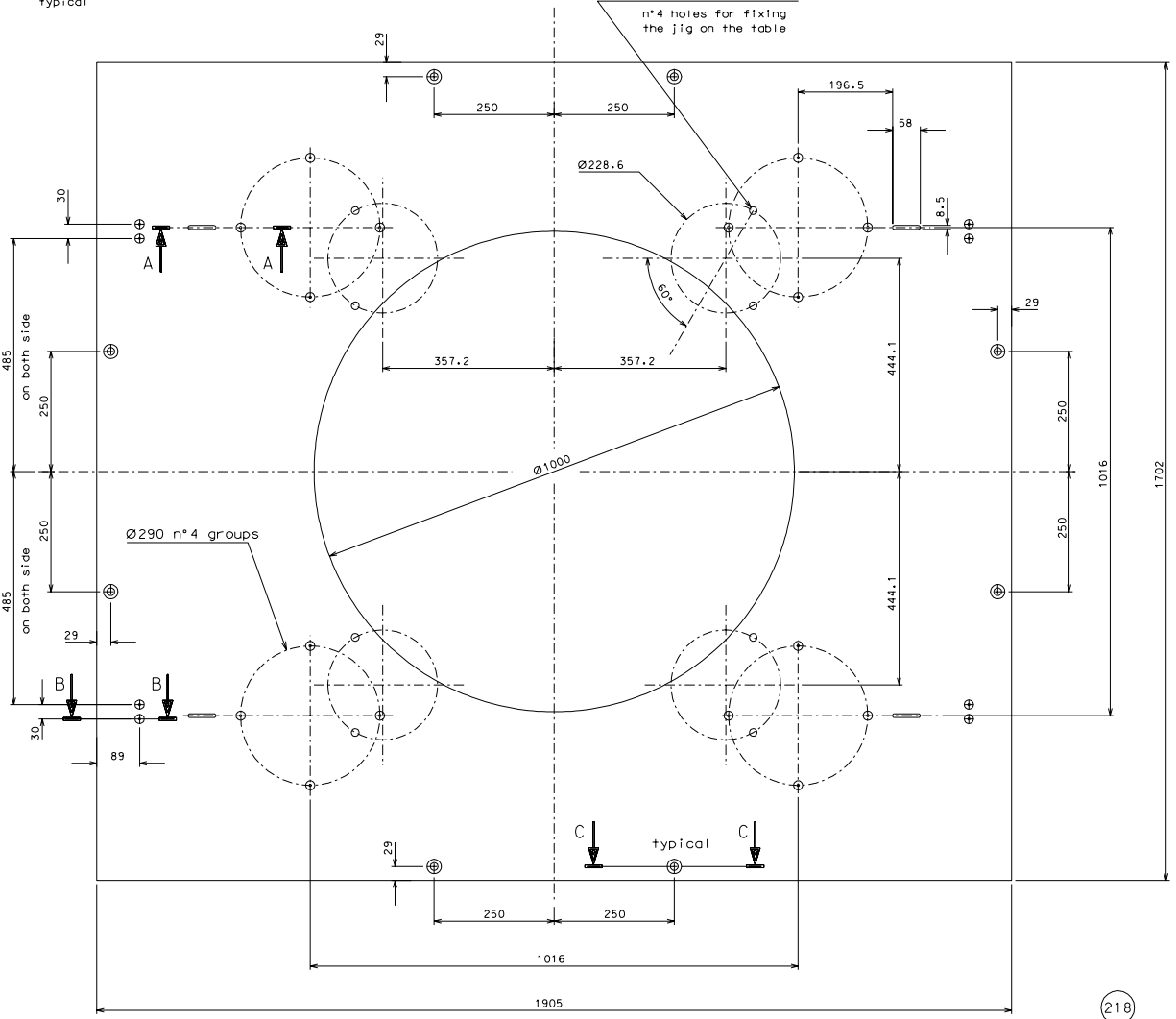
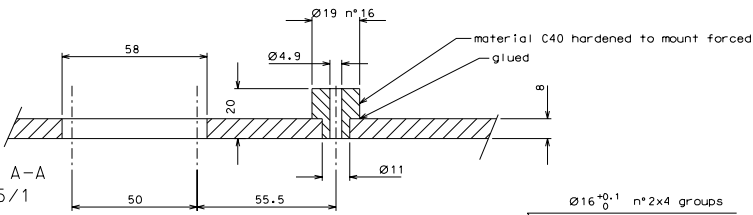
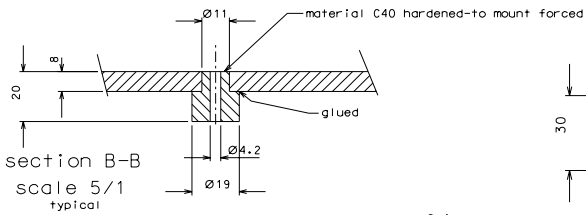


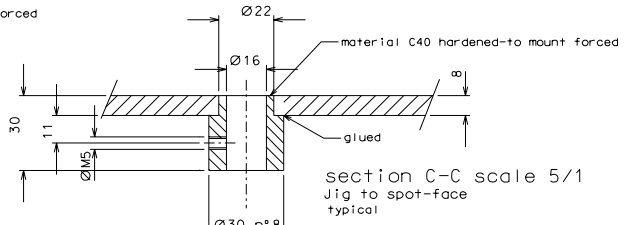
section A-A  
scale 5/1  
typical



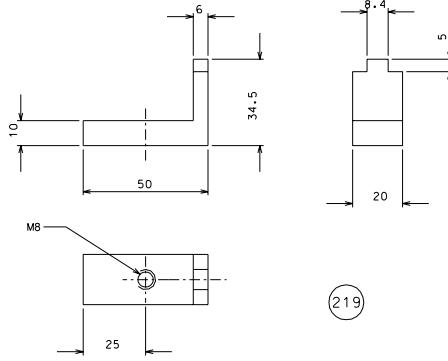
218



section B-B  
scale 5/1  
typical



section C-C scale 5/1  
Jig to spot-face  
typical



219

218.1

Jig to drill for holes M8

ref.	date	signature						
modifications								
219	4	EN 6082						
218.1	8	C40 hardened						
218	1	EN 6082						
ref.	date	signature						
ref.	date	signature						
General machining tolerances UNI 5307-83								
Dimension	< 6	6-30	30-120	120-315	315-1000	1000-2000	2000-4000	> 4000
Linear tol.	± 0.1	± 0.2	± 0.3	± 0.5	± 0.8	± 1.2	± 2	± 3
Angular tol.	± 1'	± 30'	± 20'	± 10'	refered to the shortest side			
designed by			checked by			approved by		
G. Gennaro-PROMEC			R. De Salvo			G. Gennaro-PROMEC		
date			date			date		
9-02-06			1/15			1/15		
Title			LIGO PROJECT			LIGO-D051209-00-D		
HAM-OPTICAL BENCH			JIG TO DRILL OLD TABLE			A 1		