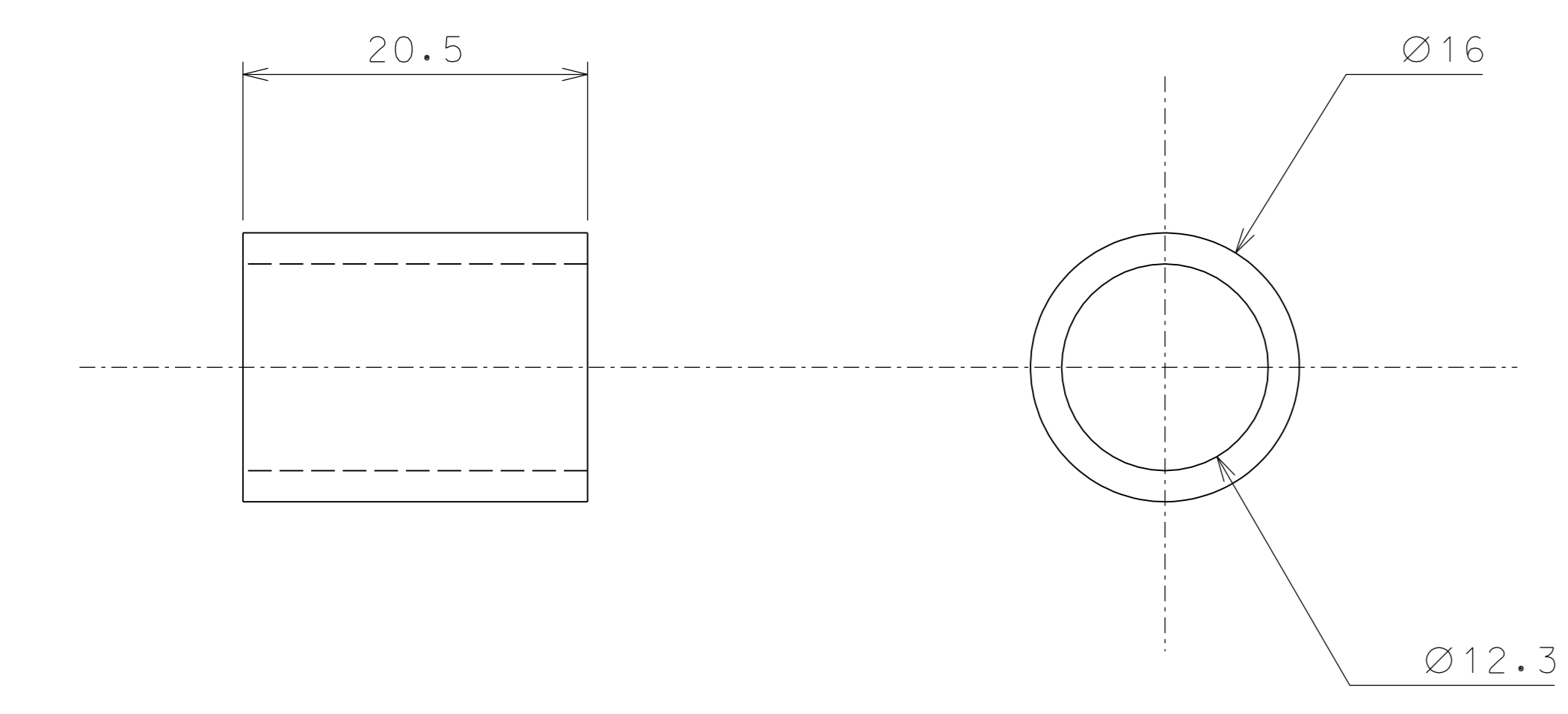
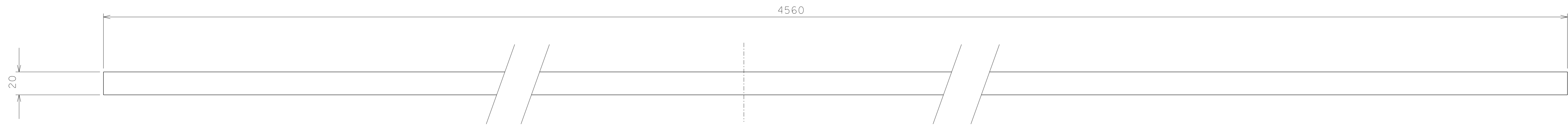
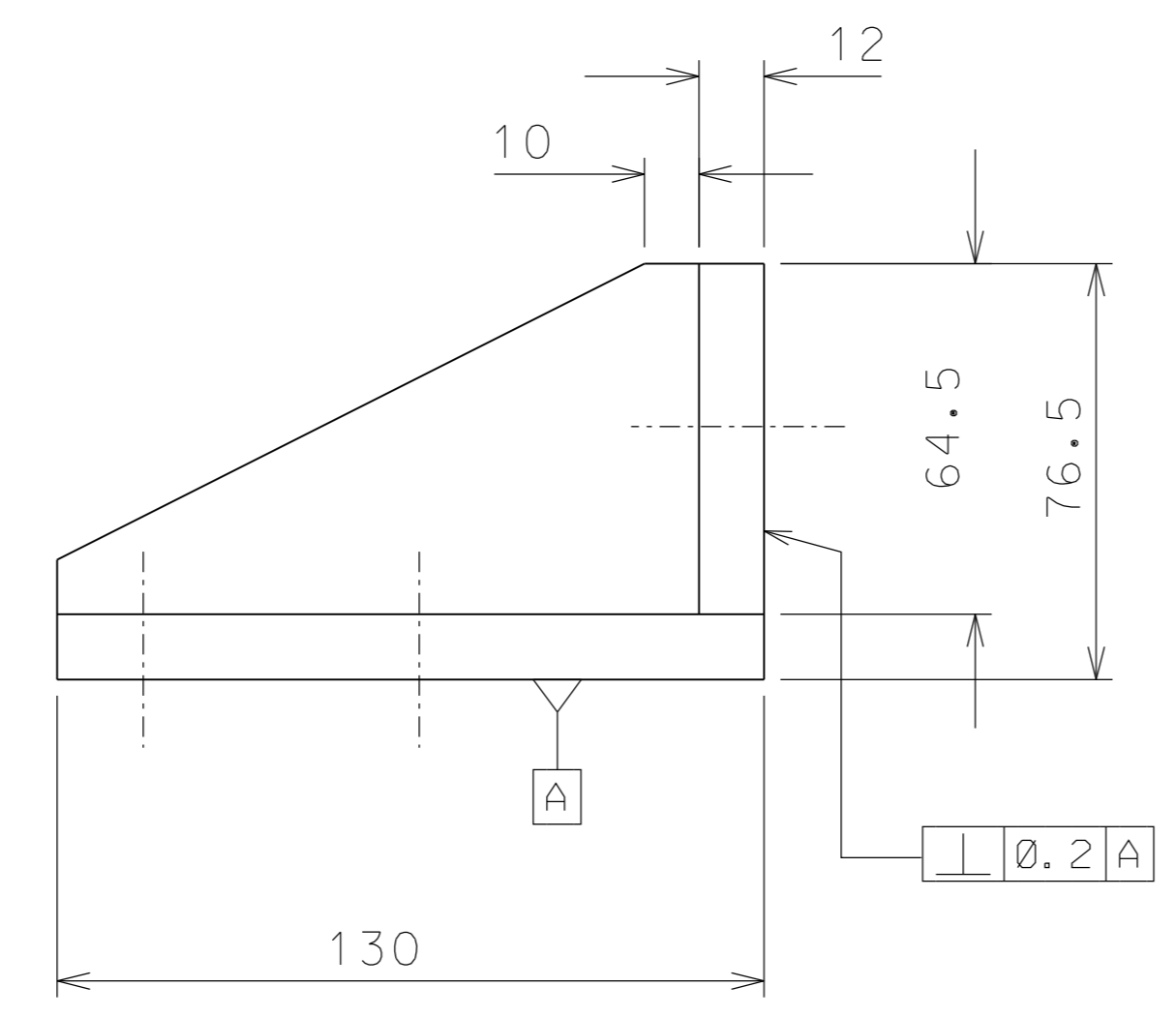


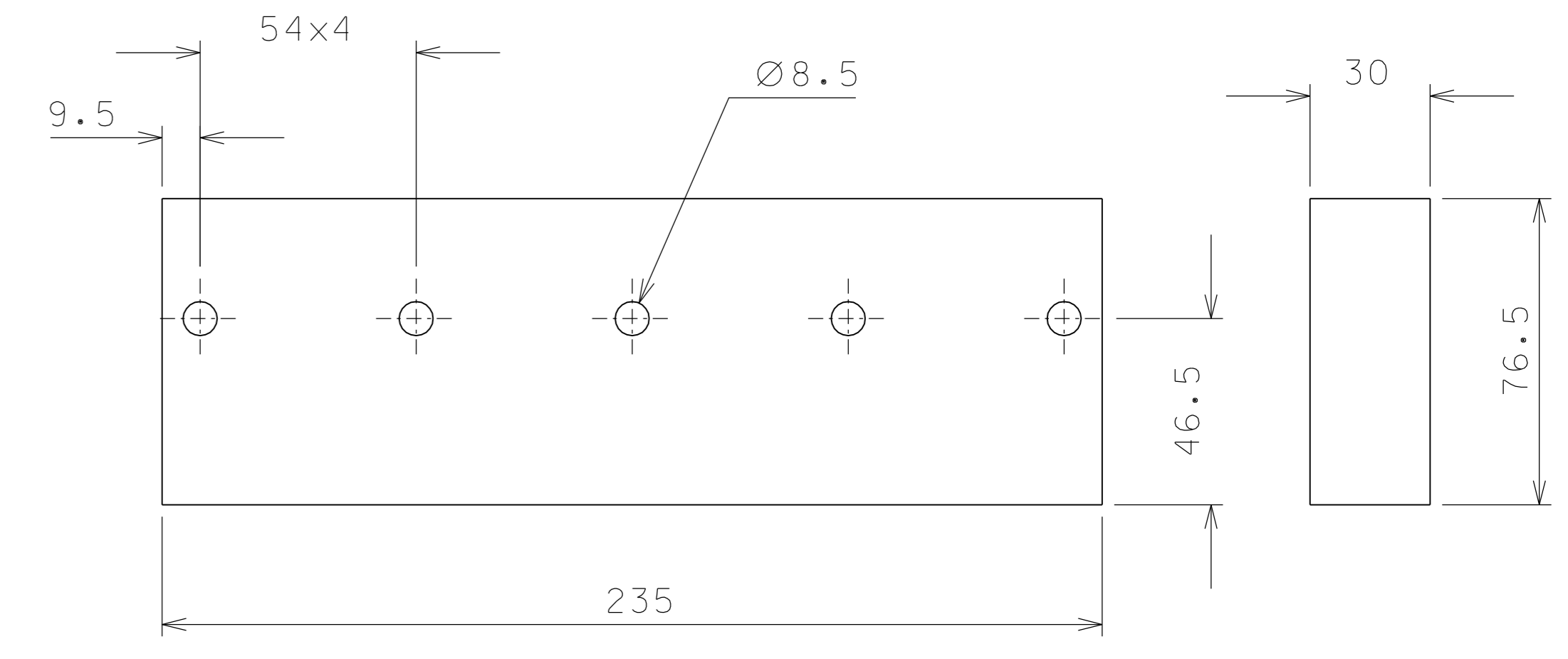
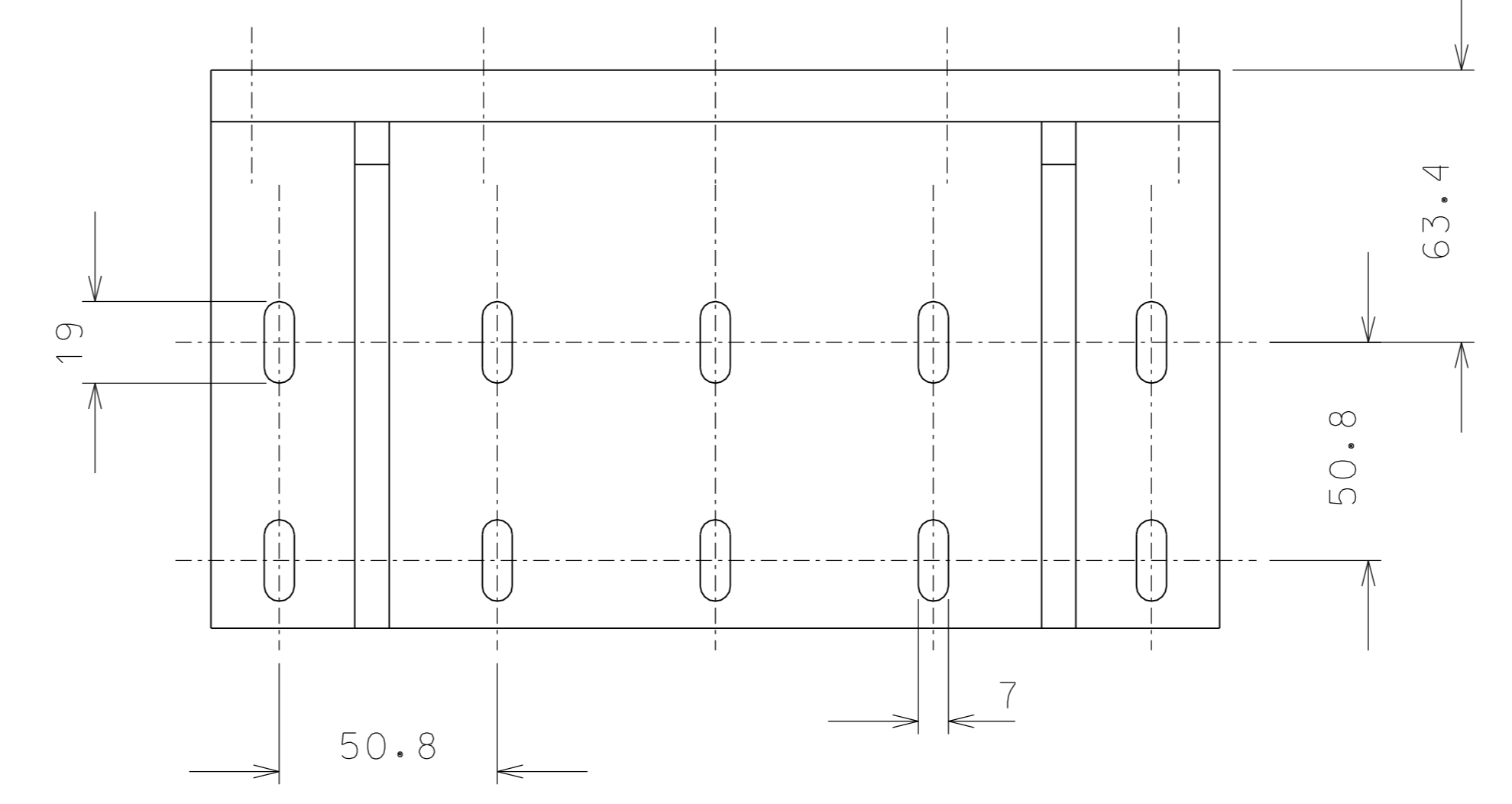
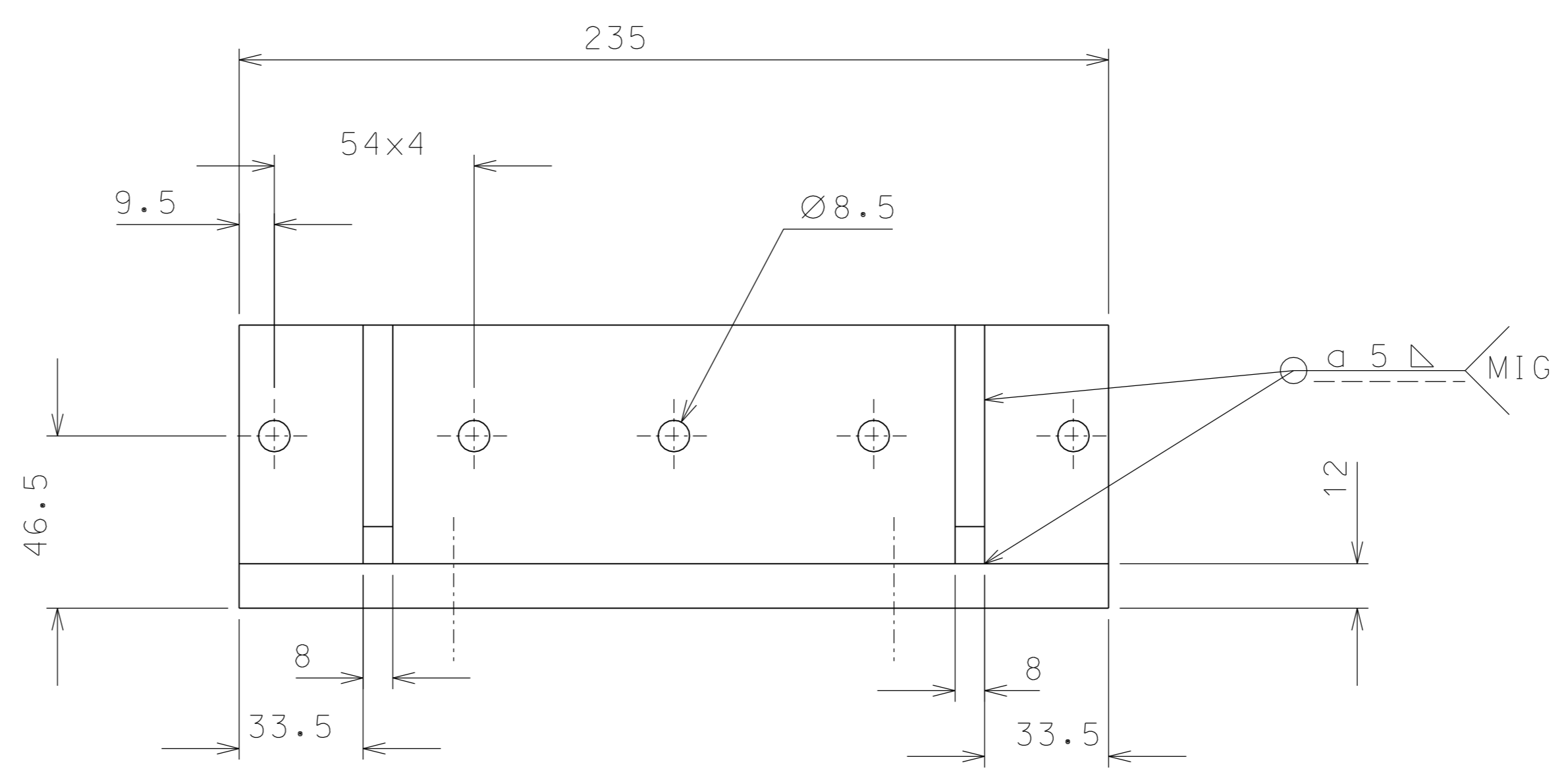
192



192.1



193



193.1

ref.	note	date	signature
	added holes for end stroke	11-10-06	
	added holes part 192	09-10-06	
modifications			
ref.	pieces	mat. and treatments	scale
193.1	4	EN 6082	1/2
193	4	EN 6082	1/2
192.1	4	EN 6082	2/1
192	2	EN 6082	1/2

General machining tolerances UNI 5307-63							
Dimensions	< 6	> 6-30	> 30-120	> 120-315	> 315-1000	> 1000-2000	> 2000-4000
linear Toli.	± 0.1	± 0.2	± 0.3	± 0.5	± 0.8	± 1.2	± 2
angular Toli.	± 1	± 30'	± 20'	± 10' referred to the shortest side			

designed for		R.De Salvo	
draw. by		G. Gennaro-PROMECC	
date		28-01-06	scale 1/2
title		LIGO PROJECT	
HAM-OPTICAL BENCH		LIGO-D051200-03-D	
GUIDE BEAM		detail from 187-188-249 A 1	