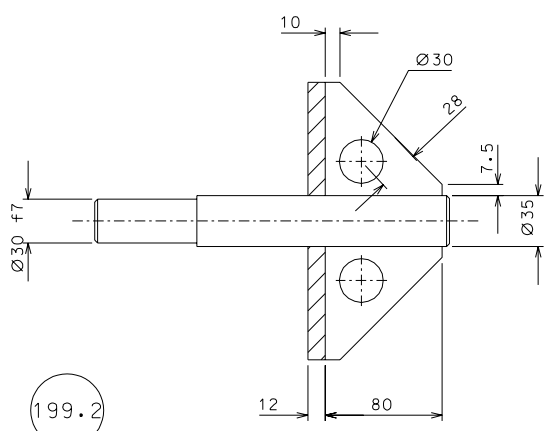
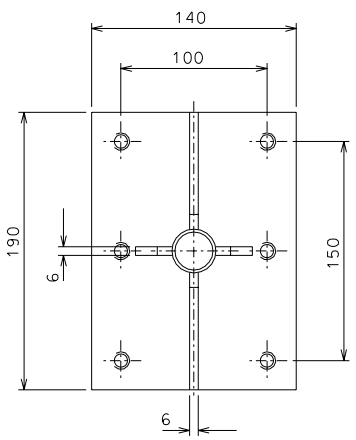
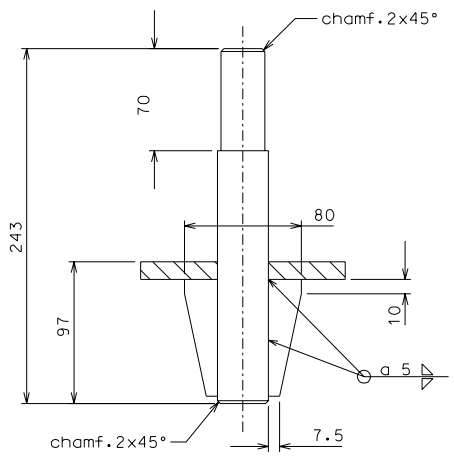


199



199.2

AS BUILT



changed position center of gravity	02-09-06		
added tolerance part 199.2	31-08-06		
modified dimension slot part 199	04-05-06		
modified dimension slot part 199	28-04-06		
ref.	note	date	signature

modifications							
199.2	4	AISI 304	1/2.5	199	2	AISI 304	1/2.5
ref.	pieces	mat. and treatments	scale	ref.	pieces	mat. and treatments	scale

General machining tolerances UNI 5307-63								
Dimensions	< 6	= 6-30	> 30-120	> 120-315	> 315-1000	> 1000-2000	> 2000-4000	> 4000
Linear Toli.	± 0.1	± 0.2	± 0.3	± 0.5	± 0.8	± 1.2	± 2	± 3
angular Toli.	± 1'	± 30'	± 20'	± 10' referred to the shortest side				
designed for							R.De Salvo	
LIGO PROJECT							draw. by G. Gennaro-PROMECA	
title							HAM-OPTICAL BENCH MOUNTING SUPPORTS	
date							27-01-06	
scale							1/2.5	
ref. from							191	
							A 2	