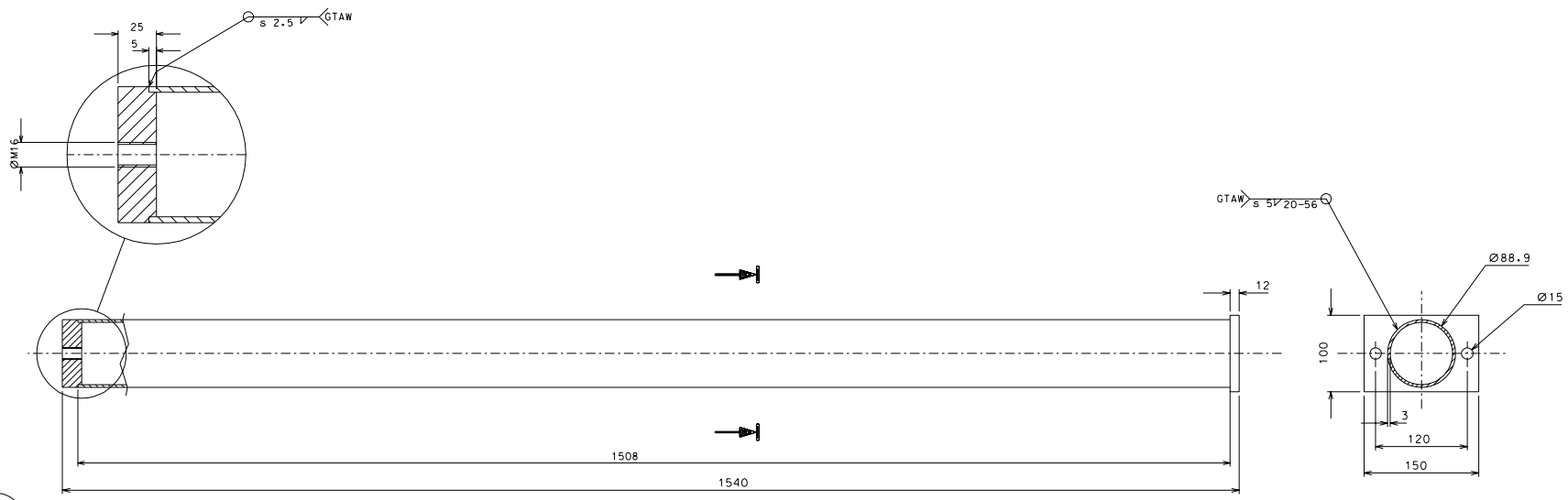
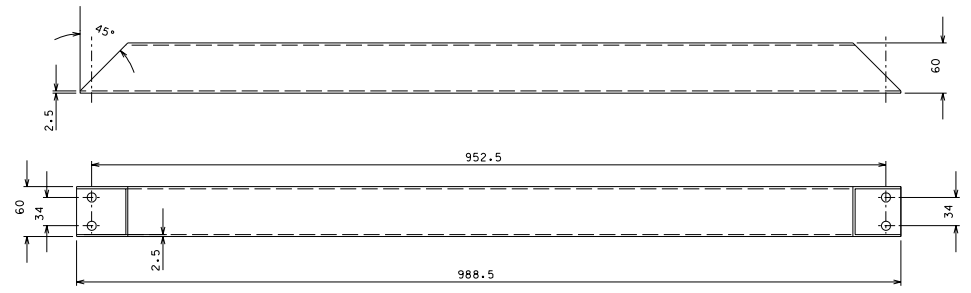


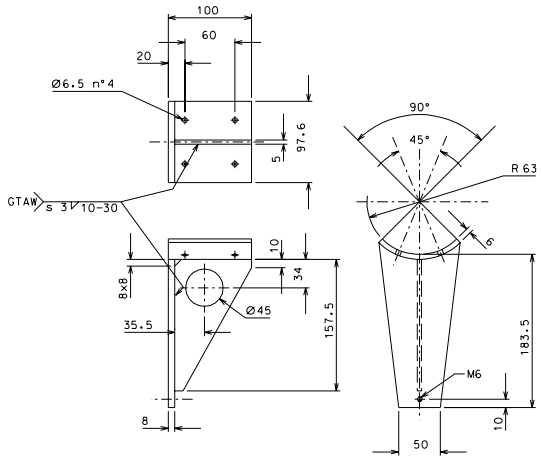
170.1



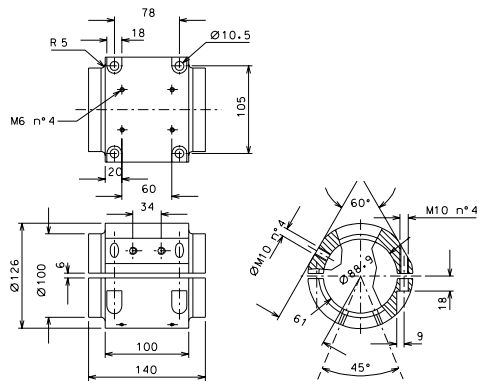
170.2



170.3



170.4



added missing dimensions		24-05-06	
modified detail 170.2		09-04-06	
ref.	none	none	signature
modifications			
170.4	3	AISI 304 L	1/3
170.3	3	AISI 304 L	1/3
170.2	3	AISI 304 L	1/3
170.1	3	AISI 304 L	1/3
ref.	blank	ref. and treatments	score
ref.	blank	ref. and treatments	score
General machining tolerances UNI 5107-85			
dimensions	< 4	4-30	> 30-100
linear tol.	± 0.1	± 0.2	± 0.3
angular tol.	± 1'	± 30'	± 20'
related to the startest side			
designed by R. De Salvo			
drawn by G. Gemmaro-PROMECA			
date 2-11-05		sheet 1/3	
title HAM-OPTICAL BENCH		LIGO-D051184-02-D	
scale		sheet 178 A 1	