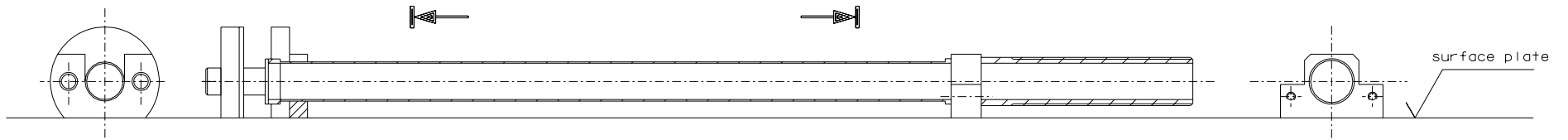
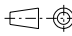


First step of mounting:
Press fit part 154 on part 147



Second step of mounting:
Press part 158 inside part
147 using a flat marble surface for alignment

165	174	balance tool			
164	174	balance tool			
163	174	balance tool			
158	169	tip bar			
154	170	clamp bar			
147	169	bar			
ref.	draw.	added legend	ref.	draw.	added legend

	LIGO PROJECT	designed for R.De Salvo
		draw. by G. Gennaro-PROMEC
title HAM-OPTICAL BENCH ASSEMBLY DRAWING		date 1-11-05
		LIGO-D051183-00-D
		scale 1/1
		A 2