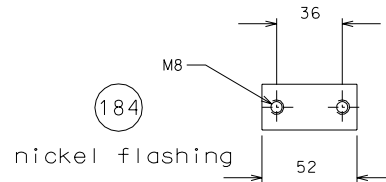
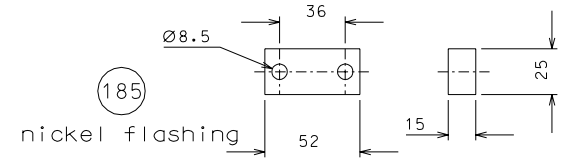
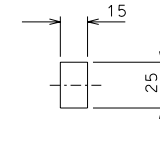


187



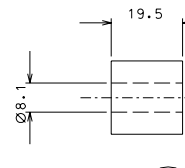
184

nickel flashing

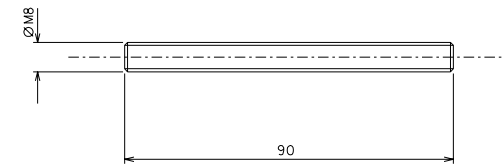


185

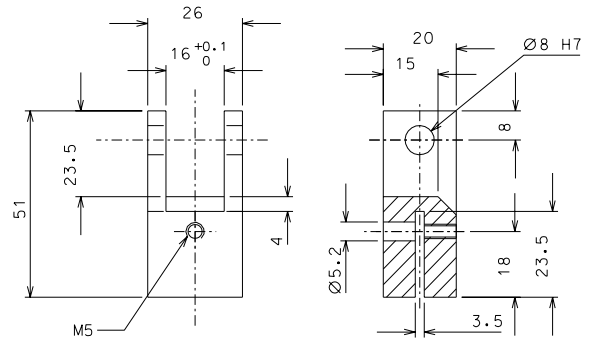
nickel flashing



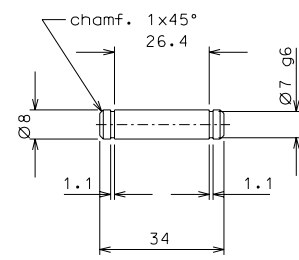
190



188



183 nickel flashing



181

modified details 187-188		09-04-06	
modified number parts		26-02-06	
ref.	note	date	signature
modifications			
187	1	EN 6082	1/2
185	1	Fe 360	1/2
184	1	Fe 360	1/2
183	1	Fe 360	1/1
181	2	inox	1/1
ref.	pieces	mat. and treatments	scale
190	6	EN 6082	1/1
188	3	inox	1/1

General machining tolerances UNI 5307-63								
Dimensions	< 6	> 6-30	> 30-120	> 120-315	> 315-1000	> 1000-2000	> 2000-4000	> 4000
Linear Toli.	± 0.1	± 0.2	± 0.3	± 0.5	± 0.8	± 1.2	± 2	± 3
angular Toli.	± 1'	± 30'	± 20'	± 10' referred to the shortest side				
designed for							R.De Salvo	
draw. by							G. Gennaro-PROMECC	
date							29-10-05	scale 1/2
Title							HAM-OPTICAL BENCH	
LARGE BLADE TOOL							LIGO-D051182-02-D	
detail from							180	A 2