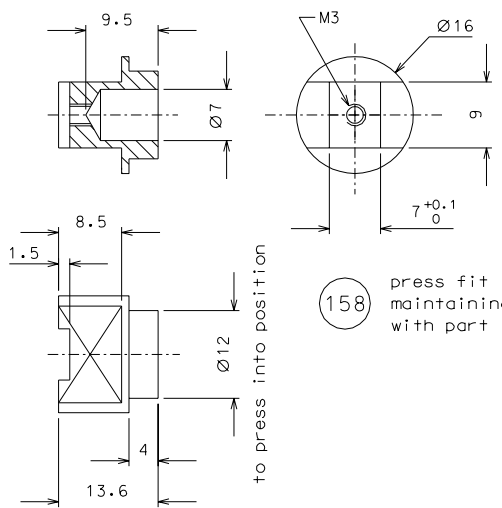
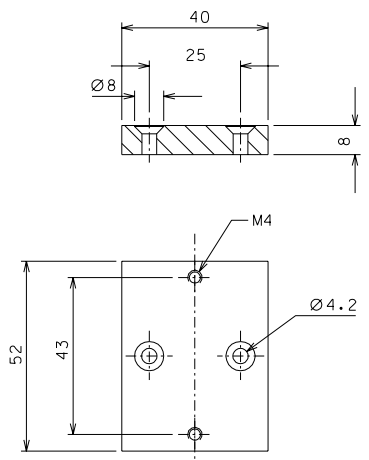


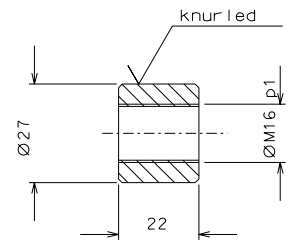
147



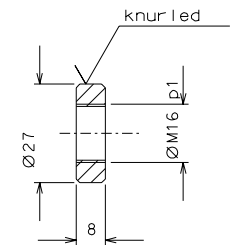
158 press fit into part 147 maintaining alignment with part 154 using tools



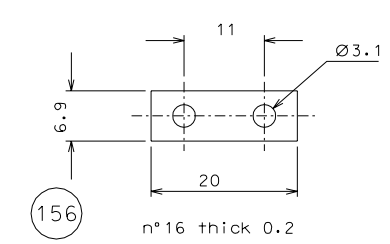
148 adjust or shim to match filter working point height with horizontal bar



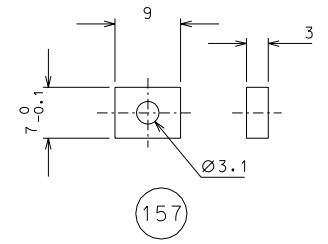
149



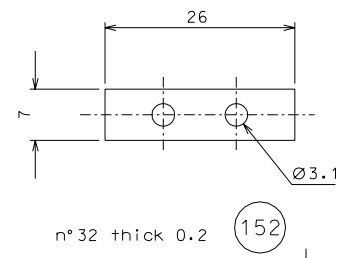
150



156



157



152

ref.	note	date	signature				
modifications							
152	32+32 spring steel	2/1					
150	16 AISI 304	1/1					
149	16 AISI 304	1/1	158 16 EN 6082 2/1				
148	16 EN 6082	1/1	157 48 AISI 304 2/1				
147	16 EN 6082	1/1	156 16+16 spring steel 2/1				
ref.	pieces	mat. and treatments	scale	ref.	pieces	mat. and treatments	scale

General machining tolerances UNI 5307-63							
Dimensions	< 6	> 6-30	> 30-120	> 120-315	> 315-1000	> 1000-4000	> 4000
Linear Toli.	± 0.1	± 0.2	± 0.3	± 0.5	± 0.8	± 1.2	± 2
Angular Toli.	± 1'	± 30'	± 20'	± 10' referred to the shortest side			

designed for R.De Salvo	
draw. by G. Gennaro-PROMECC	
date 6-10-05	scale 1/1
title HAM-OPTICAL BENCH	
BALANCE	
date ¹ from 167	scale A 2