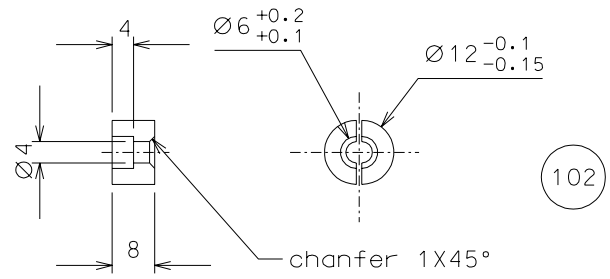
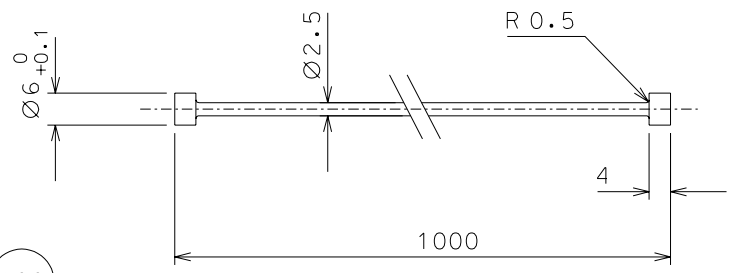


(101) nickel plated



(102)



(100)

ref.	note	date	signature
modifications			
102	18	C 40 hardened	1/1
101	4	Fe 360	1/1
100	4	maraging	1/1
ref.	pieces	mat. and treatments	scale

General machining tolerances UNI 5307-63								
Dimensions	< 6	>6-30	>30-120	> 120-315	> 315-1000	>1000-2000	>2000-4000	> 4000
linear Toll.	± 0.1	± 0.2	± 0.3	± 0.5	± 0.8	± 1.2	± 2	± 3
angular Toll.	± 1	± 30'	± 20'	± 10' referred to the shortest side				

	LIGO PROJECT	designed for R.De Salvo	
	draw. by G. Gennaro-PRMEC		
title HAM-OPTICAL BENCH HORIZONTAL CALIBRATOR	date 21-07-05		scale 1/1
	LIGO-D051153-00-D		
	detail from 149-157		A 3