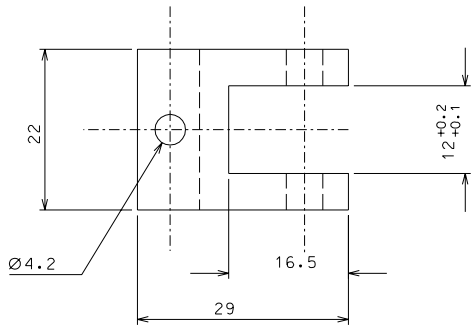
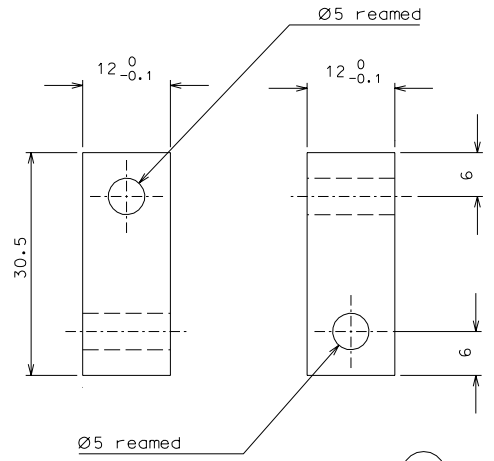
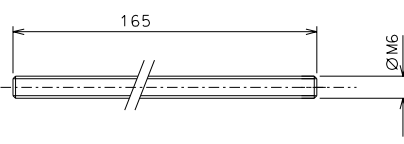


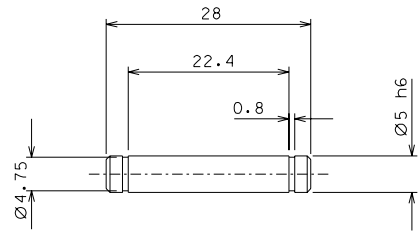
87



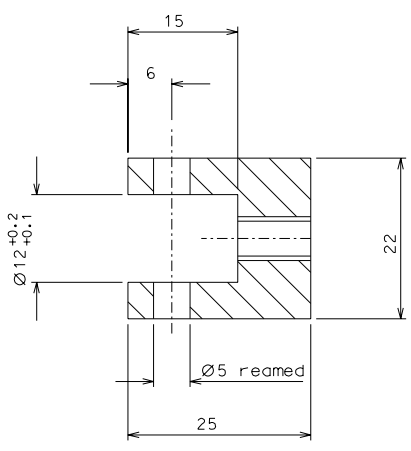
91



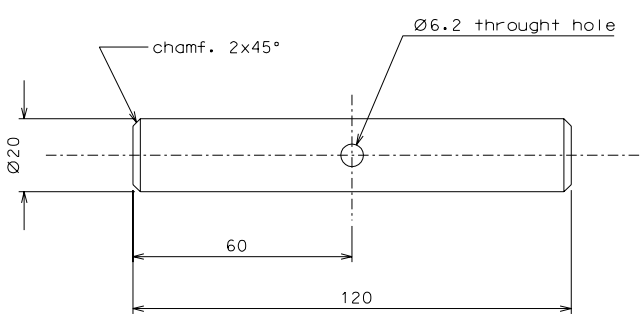
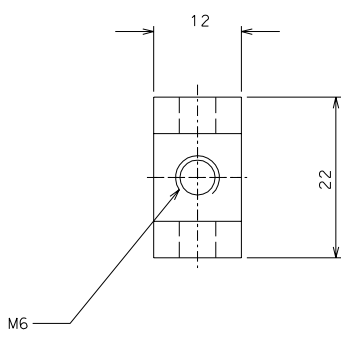
89



88



90



92

modified detail 87		08-04-06	
modified number parts		26-02-06	
ref.	note	date	signature
modifications			
91	1 inox	1/1	
90	1 AISI 304	2/1	
89	1 AISI 304	2/1	
88	2 C 40	2/1	
87	1 AISI 304	2/1	
92	1 EN 6082	1/1	
ref.	pieces	mat. and treatments	scale

General machining tolerances UNI 5307-63								
Dimensions	< 6	6-30	30-120	120-315	315-1000	>1000-2000	>2000-4000	> 4000
Linear Toli.	± 0.1	± 0.2	± 0.3	± 0.5	± 0.8	± 1.2	± 2	± 3
angular Toli.	± 1'	± 30'	± 20'	± 10' referred to the shortest side				
designed for							R.De Salvo	
draw. by							G. Gennaro-PROMEC	
date							29-01-05	
title							scale 1/1	
HAM-OPTICAL BENCH							LIGO-D051147-02-D	
DETAIL MOUNTING BLADE							detail from 144 A 2	