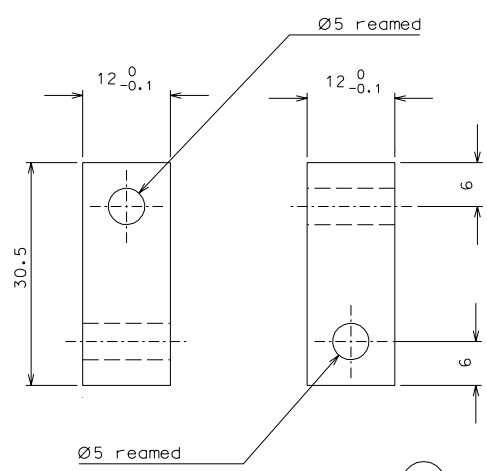
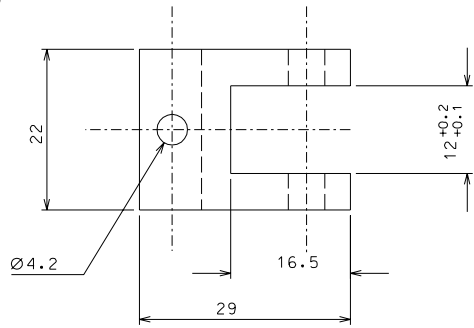
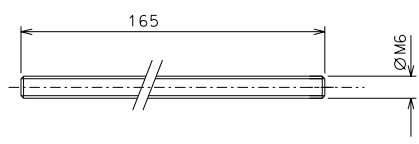


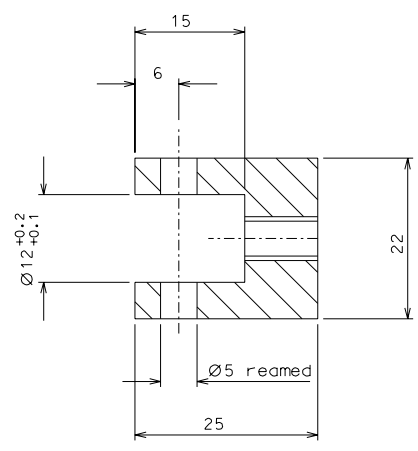
87



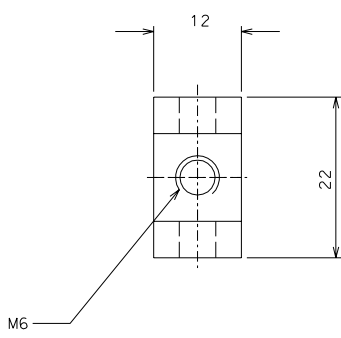
89



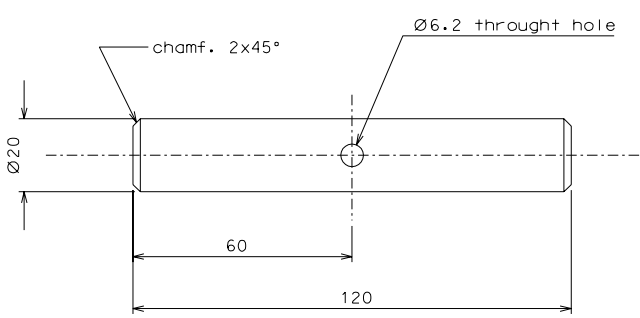
91



90



88



92

modified number pieces		26-02-06	
ref.	note	date	signature
modifications			
91	1	inox	1/1
90	1	AISI 304	2/1
89	1	AISI 304	2/1
88	1	C 40	2/1
87	1	AISI 304	2/1
ref.	pieces	mat. and treatments	scale
92	1	inox	1/1

General machining tolerances UNI 5307-63								
Dimensions	< 6	6-30	30-120	120-315	315-1000	>1000-2000	>2000-4000	> 4000
linear Toli.	± 0.1	± 0.2	± 0.3	± 0.5	± 0.8	± 1.2	± 2	± 3
angular Toli.	± 1'	± 30'	± 20'	referred to the shortest side				
designed for							R.De Salvo	
draw. by							G. Gennaro-PROMEC	
date							29-01-05	
title							scale 1/1	
HAM-OPTICAL BENCH							LIGO-D051147-01-D	
DETAIL MOUNTING BLADE							detail from 144 A 2	