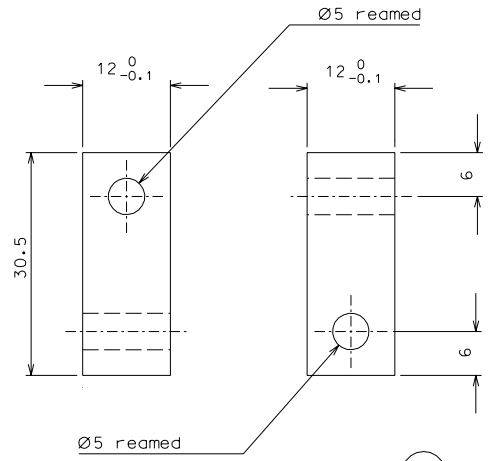
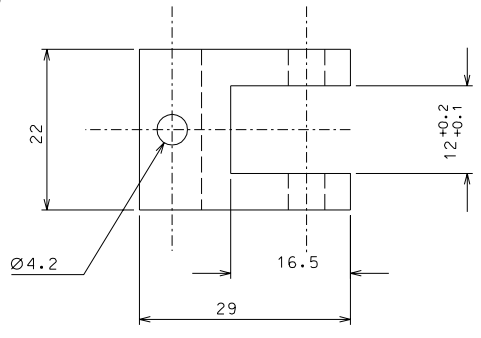


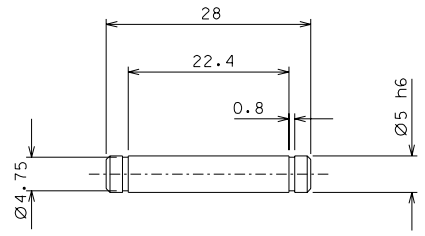
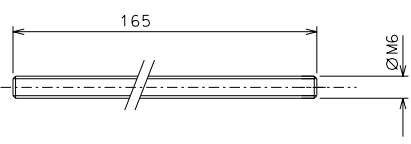
87



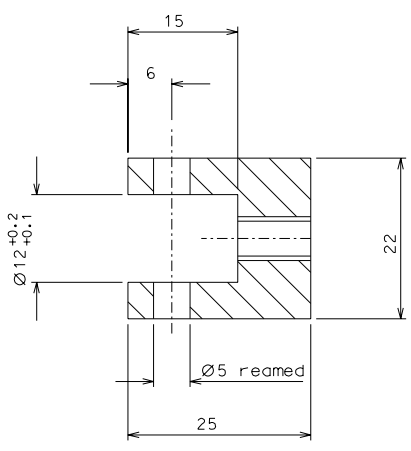
89



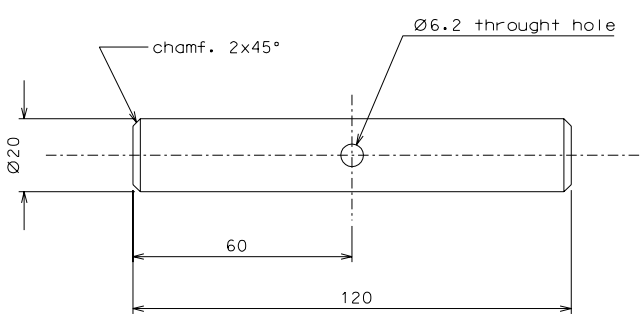
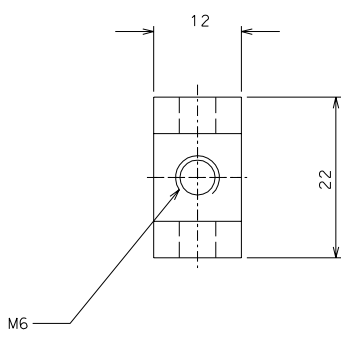
91



88



90



92

ref.	note	date	signature
modifications			
91	1 inox	1/1	
90	1 AISI 304	2/1	
89	1 AISI 304	2/1	
88	2 C 40	2/1	
87	1 AISI 304	2/1	
ref.	pieces	mat. and treatments	scale
92	1	inox	1/1

General machining tolerances UNI 5307-63						
Dimensions	< 6	6-30	30-120	120-315	315-1000	>1000-2000
Linear Toli.	± 0.1	± 0.2	± 0.3	± 0.5	± 0.8	± 1.2
angular Toli.	± 1'	± 30'	± 20'	± 10'		
referred to the shortest side						
designed for			R.De Salvo			
draw. by			G. Gennaro-PROMEC			
date			29-01-05			
title			scale 1/1			
HAM-OPTICAL BENCH			LIGO-D051147-00-D			
DETAIL MOUNTING BLADE			sheet 144 A 2			