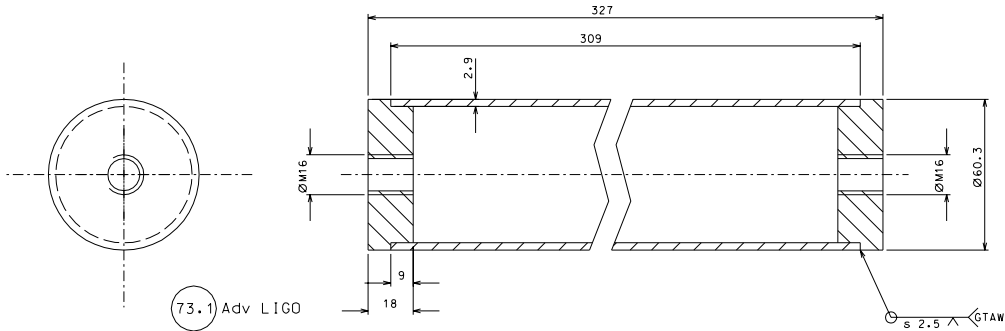
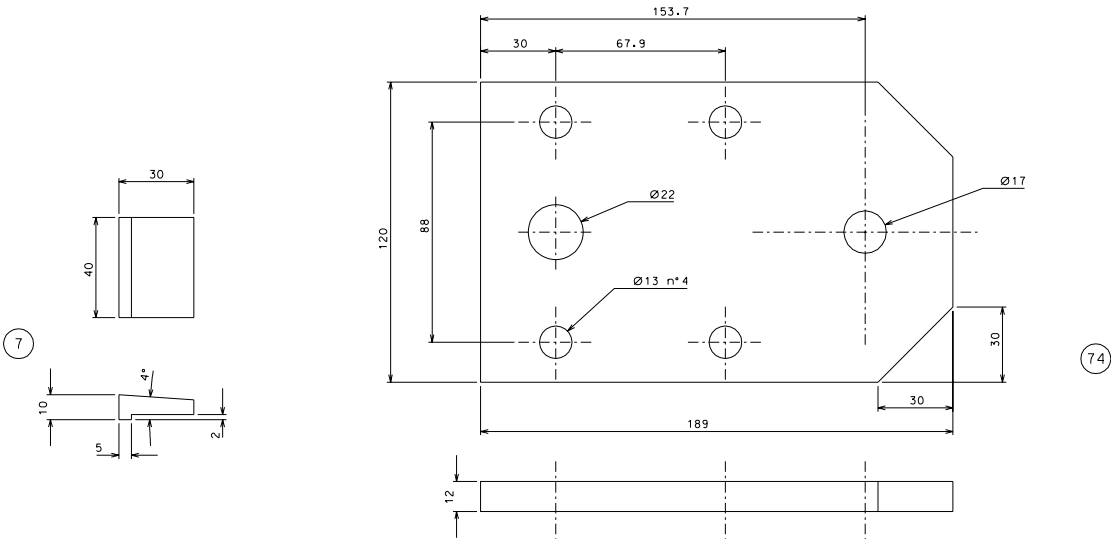


73

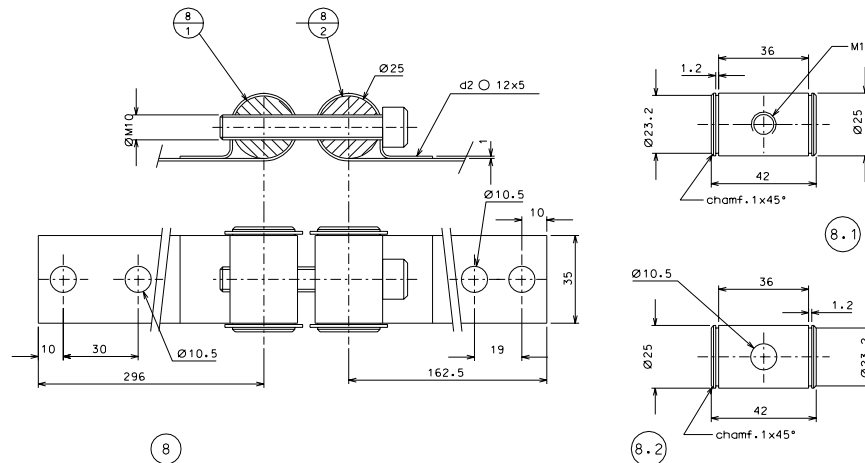


73.1 Adv LIGO



7

74



8

8.1

8.2

NOTE: To find the detail 8.8.1-8.2 from outside supplier

modified part 7 and 74		01-06-06	
not to machine detail 8-8.1-8.2		07-04-06	
rev.	note	date	signature
modifications			
7.3	4	AISI 304 L	1/1
8.2	0	AISI 304	1/1
8.1	0	AISI 304	1/1
8	0	AISI 304	1/1
7	8	AISI 304	1/1
7.3.1	4	AISI 304 L	1/1
7.3.1	4	AISI 304 L	1/1
rev.	pieces	mat. and treatments	score
rev.	pieces	mat. and treatments	score

General machining tolerances UNI 5307-83											
Dimensione	< 6	6-30	30-120	120-315	315-1000	1000-2000	2000-4000	> 4000			
Tolleranza	±0.1	±0.15	±0.2	±0.3	±0.5	±0.8	±1.2	±2	±3		
Angolo file	±1°	±30'	±20'	refered to the shortest side							
designed by R.De Salvo											
drawn by G. Gennaro-PROMECH											
date 13-01-05 scale 1/1											
title LIGO PROJECT											
HAM-OPTICAL BENCH											
MOUNTING TOOLS											
sheet 103 of A 1											