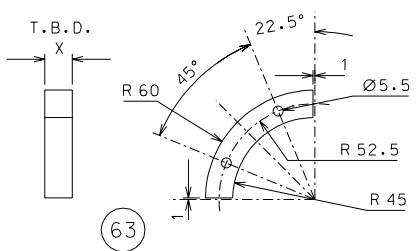
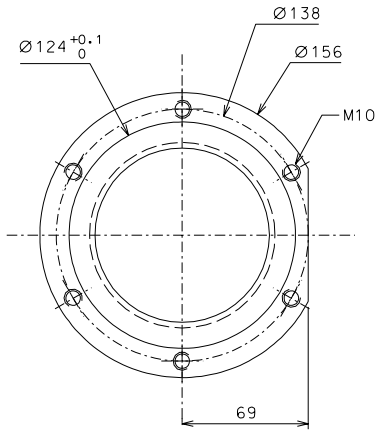
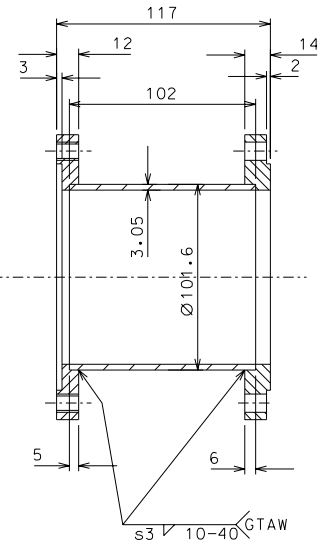
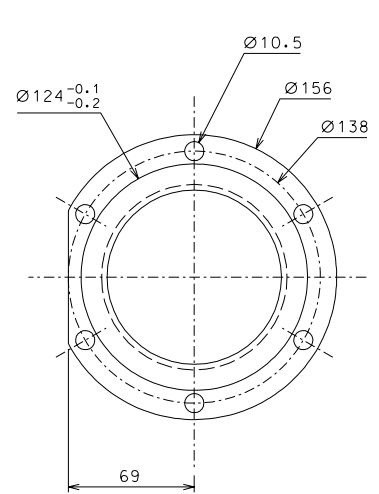


35



63



31

modified part 62				24-05-06	
ref.	note			date	signature
modifications					
63	8	AISI 304	1/2		
62	2	EN 6082	1/2		
35	4	EN 6082	1/2		
31	4	AISI 304	1/2		
ref.	pieces	mat. and treatments	scale	ref.	pieces mat. and treatments scale

General machining tolerances UNI 5307-63								
Dimensions	< 6	> 6-30	> 30-120	> 120-315	> 315-1000	> 1000-2000	> 2000-4000	> 4000
Linear Toli.	± 0.1	± 0.2	± 0.3	± 0.5	± 0.8	± 1.2	± 2	± 3
angular Toli.	± 1'	± 30'	± 20'	± 10' referred to the shortest side				
designed for				R.De Salvo				
draw. by				G. Gennaro-PROMECC				
date				9-01-05		scale		1/2
title				HAM-OPTICAL BENCH				
INVERTED PENDULUM				LIGO-D051136-01-D				
date <sup>1</sup> from				107		A		2