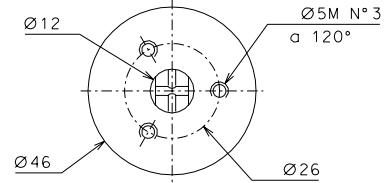
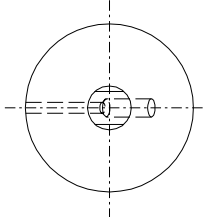
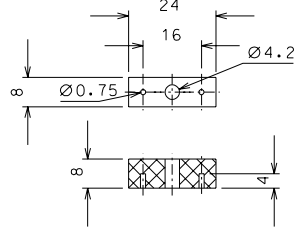


136

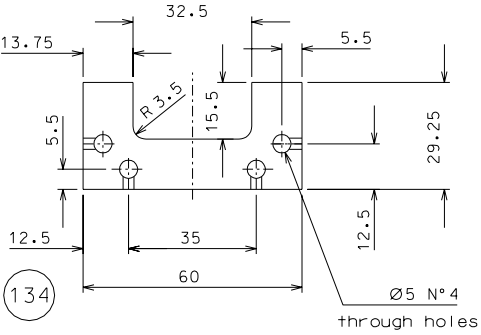
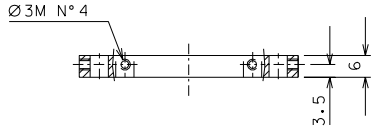
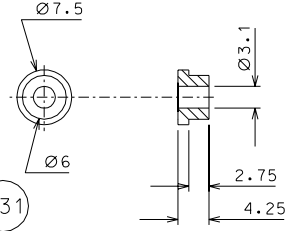


139

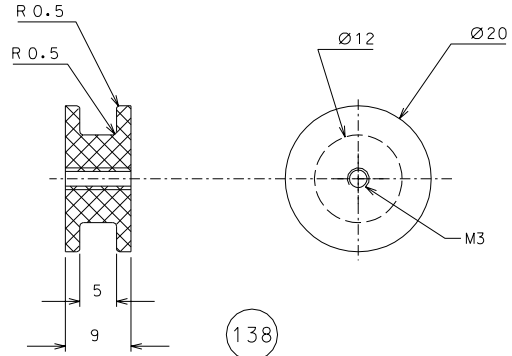


136.1

131



134



138

Primary coil: wire 41-AWG, turns 2150.  
Use only kapton insulated wires approved by LIGO,  
all other kinds of enamel are forbidden.

ref.	note	date	signature				
modifications							
136	4 EN 6082 1:1						
134	8 EN 6082 1:1	139	8 AISI 304 2:1				
131	32 peek 1000 2:1	138	4 peek 1000 2:1				
130	32 peek 1000 2:1	136.1	4 peek 1000 2:1				
ref.	pieces	mat. and treatments	scale	ref.	pieces	mat. and treatments	scale

General machining tolerances UNI 5307-63								
Dimensions	< 6	> 6-30	> 30-120	> 120-315	> 315-1000	> 1000-2000	> 2000-4000	> 4000
Linear Toli.	± 0.1	± 0.2	± 0.3	± 0.5	± 0.8	± 1.2	± 2	± 3
angular Toli.	± 1'	± 30'	± 20'	referred to the shortest side				
designed for <b>R.De Salvo</b>								
draw. by <b>G. Gennaro-PROMEC</b>								
date 6-01-05				scale 1/1				
title <b>HAM-OPTICAL BENCH</b>								
LVDI								
data <sup>1</sup> from 112						A 2		