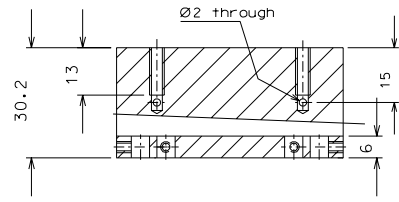
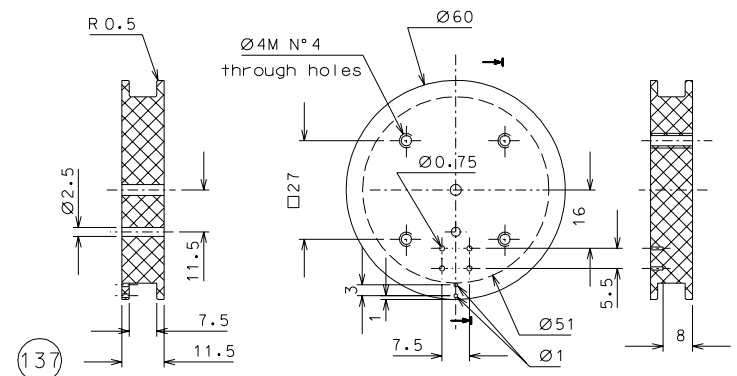


133

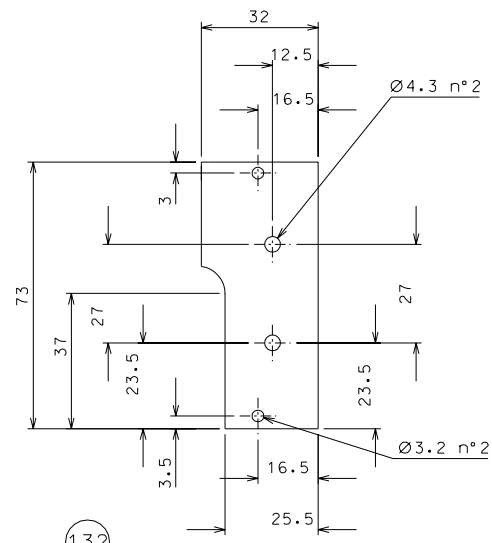


135



137

Secondary coil: wire 38-AWG, 430 turns.
Use only kapton insulated wires approved
by LIGO, all other kinds of enamel are
forbidden.



132

ref.	note	date	signature				
modifications							
137	8 peek 1000	1:1					
135	4 EN 6082	1:1					
133	8 EN 6082	1:1					
132	16 EN 6082	1:1					
ref.	pieces	mat. and treatments	scale	ref.	pieces	mat. and treatments	scale

General machining tolerances UNI 5307-63								
Dimensions	< 6	> 6-30	> 30-120	> 120-315	> 315-1000	> 1000-2000	> 2000-4000	> 4000
Linear Toli.	± 0.1	± 0.2	± 0.3	± 0.5	± 0.8	± 1.2	± 2	± 3
Angular Toli.	± 1'	± 30'	± 20'	± 10' referred to the shortest side				

	LIGO PROJECT designed for R.De Salvo draw. by G. Gennaro-PROMECC date 6-01-05 scale 1/1	
	title HAM-OPTICAL BENCH LVDT date ¹ from 112	