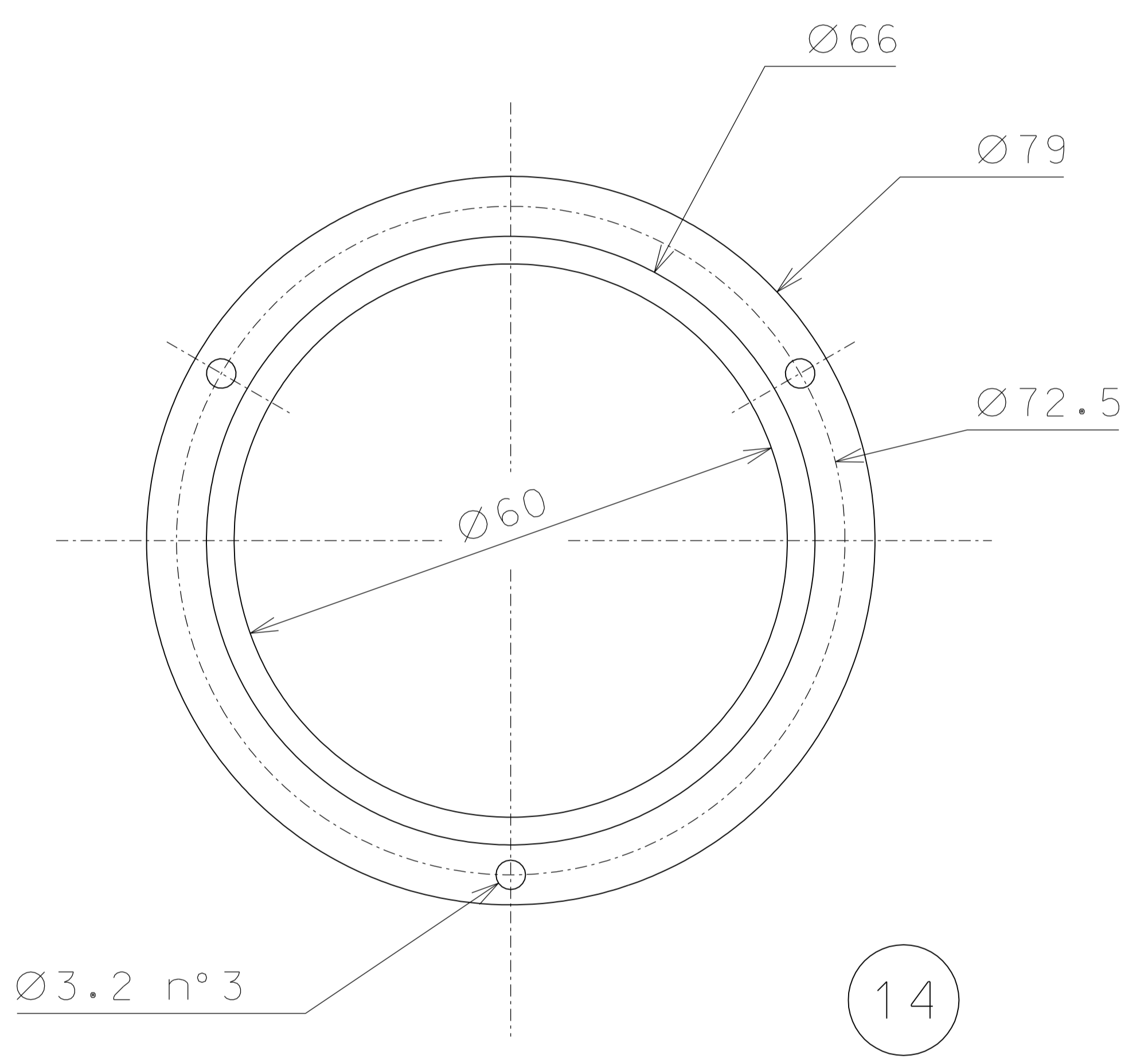
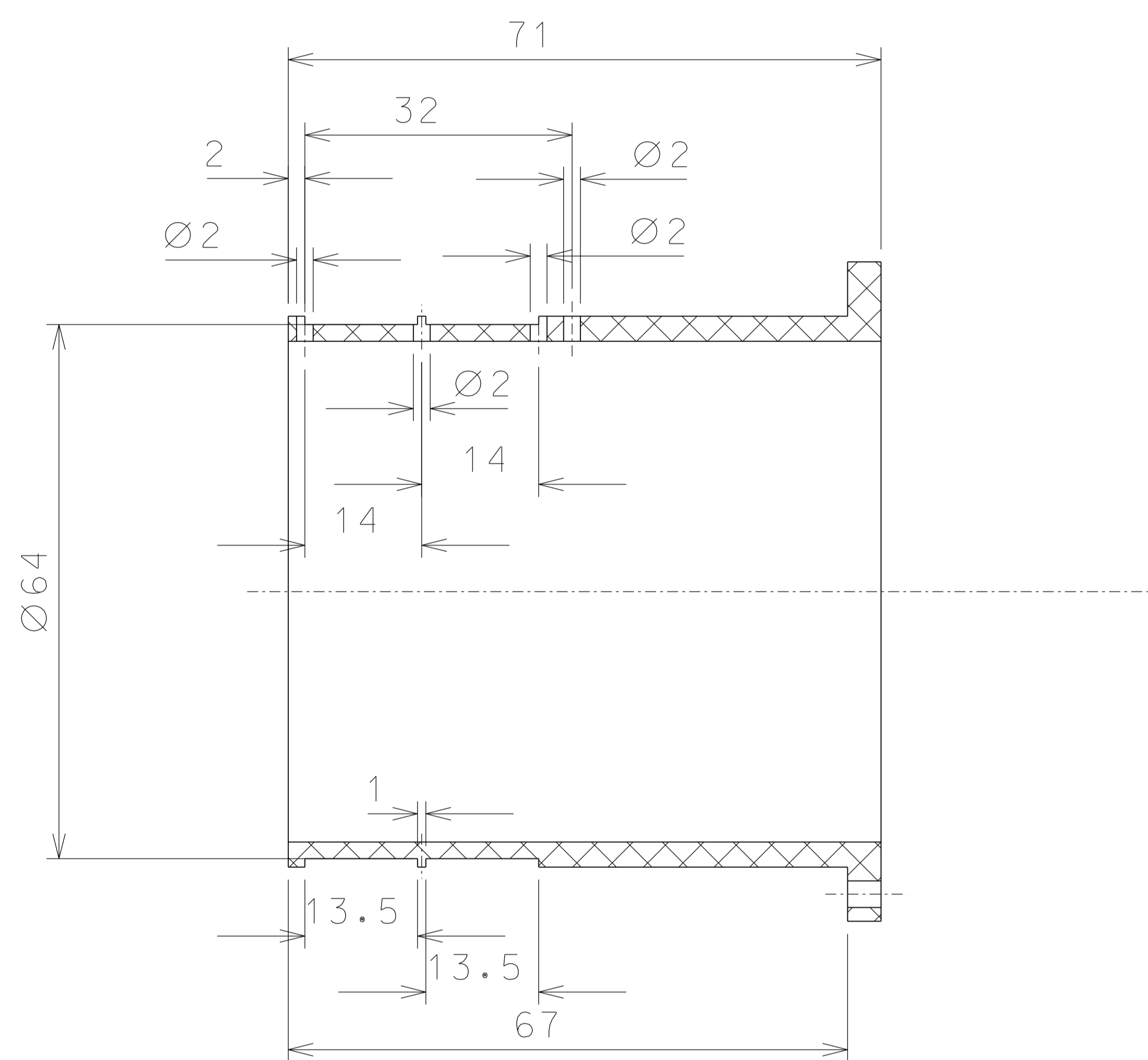
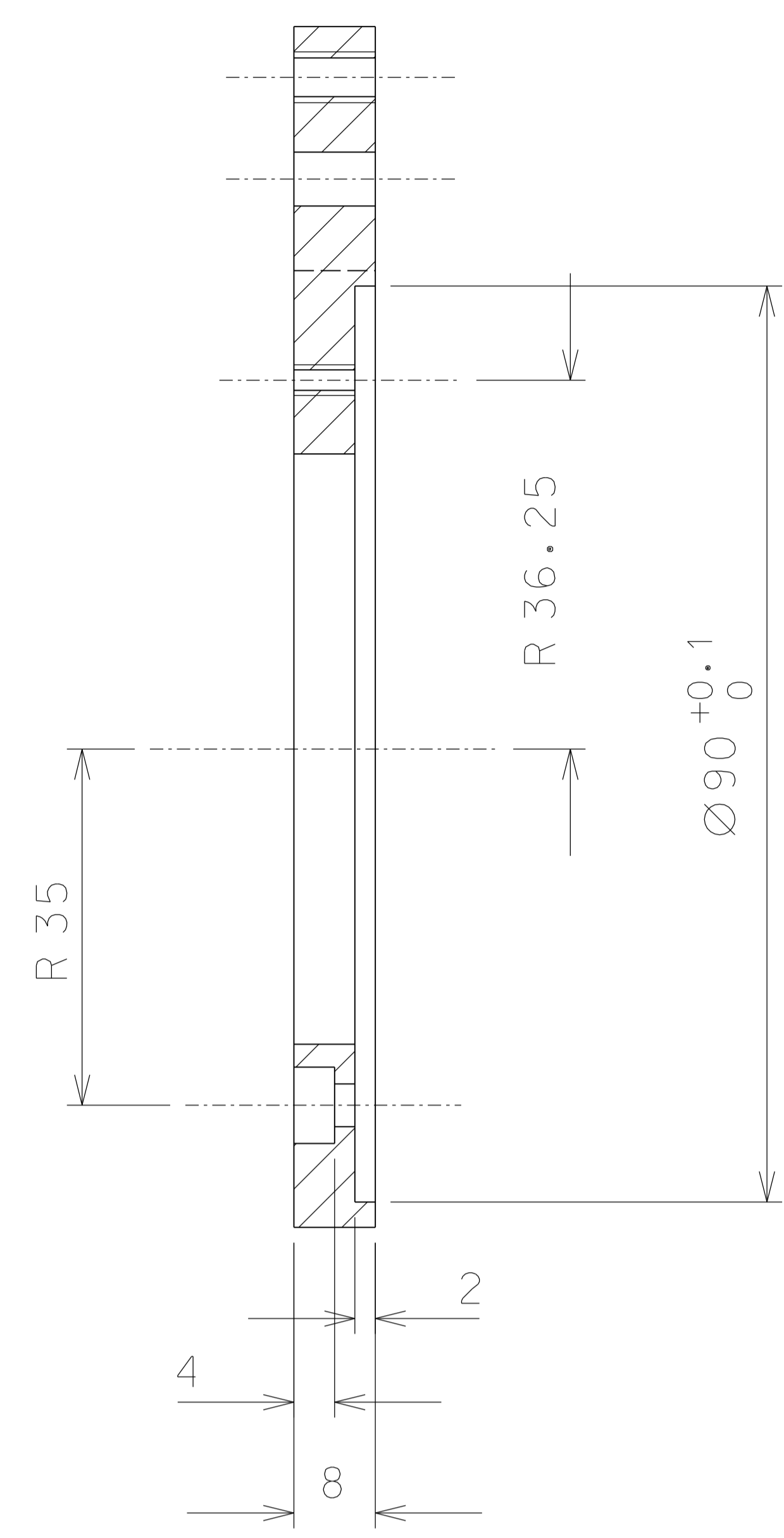
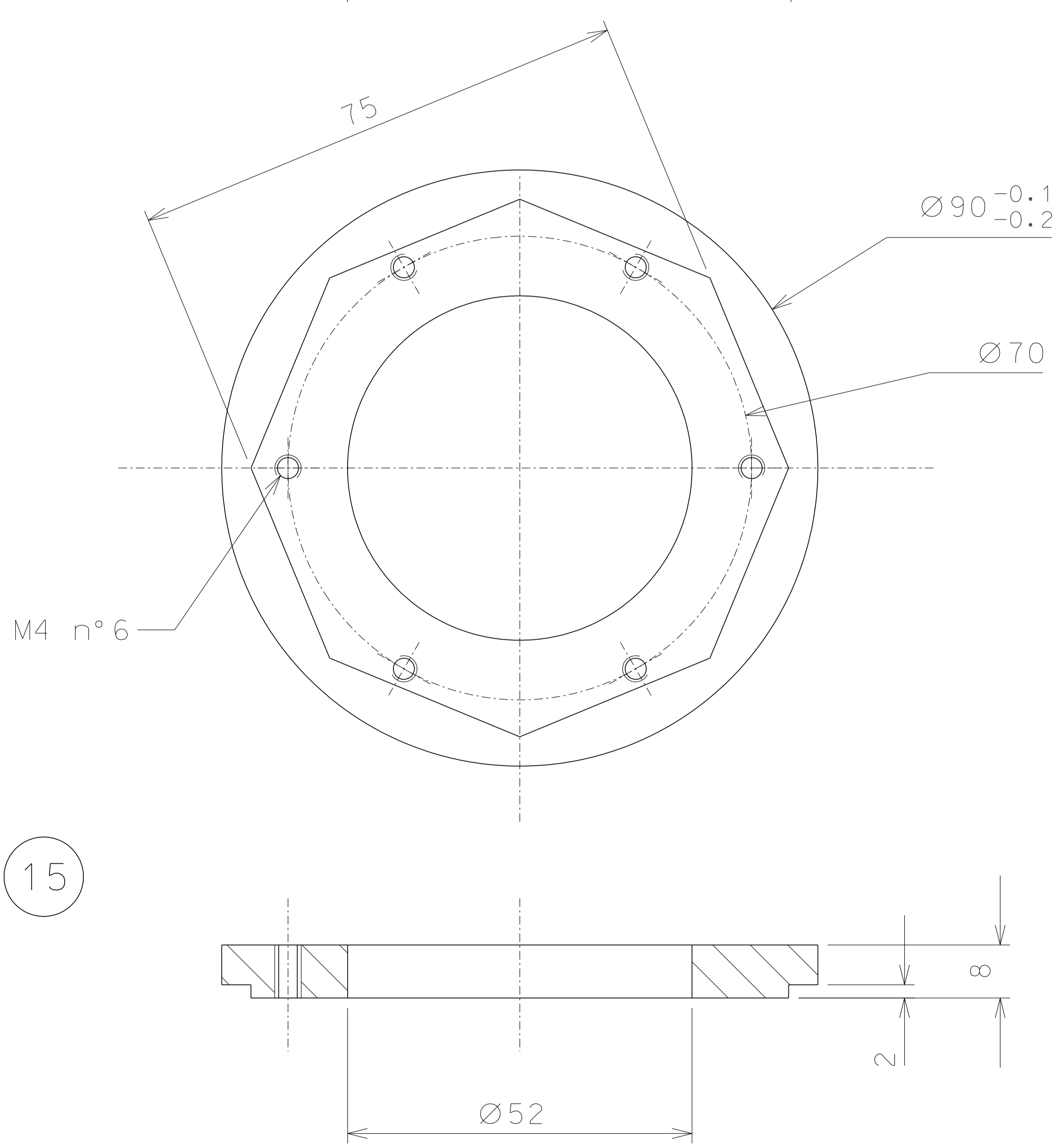


18



14



15

secondary coil: wire 41-AWG size 100 turns for coil.
Use only kapton insulated wires approved by LIGO, all other kinds of enamel are forbidden.

ref.	note	date	signature
	added holes part 15	03-11-06	
	modified part 14	23-06-06	
	modified external dia part 18	10-04-06	
modifications			
ref.	pieces	mat. and treatments	scale
18	4	AISI 304	1/1
15	4	ARMCO steel	1/1
14	4	peek 1000	1/1

General machining tolerances UNI 5307-63								
Dimensions	< 6	> 6-30	> 30-120	> 120-315	> 315-1000	> 1000-2000	> 2000-4000	> 4000
linear Toll.	± 0.1	± 0.2	± 0.3	± 0.5	± 0.8	± 1.2	± 2	± 3
angular Toll.	± 1	± 30'	± 20'	± 10' referred to the shortest side				

designed for		R.De Salvo	
draw. by		G.Gennaro-PROMECC	
date		2-01-05	
scale		1/1	
title		LIGO PROJECT	
title		HAM-OPTICAL BENCH	
title		DETAILS FILTER	
detail from		106	
detail from		A 2	