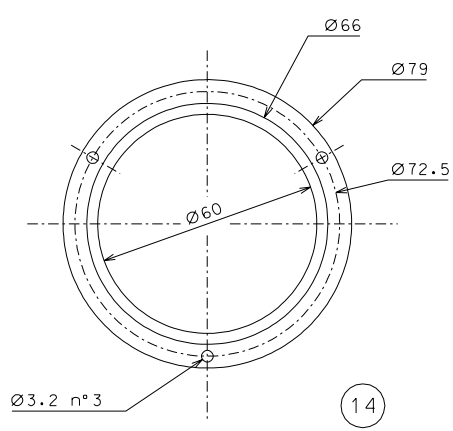
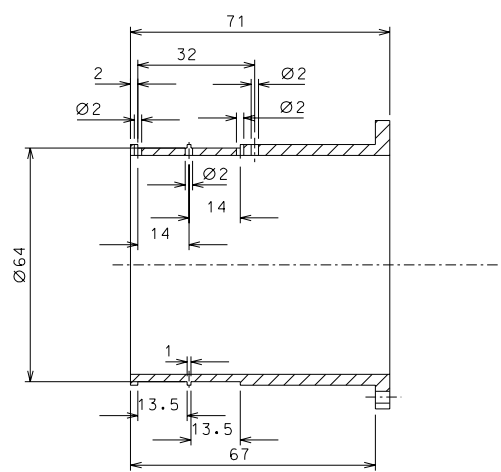
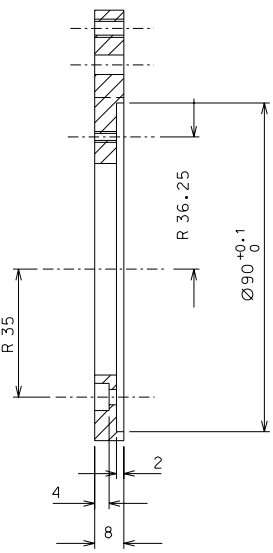
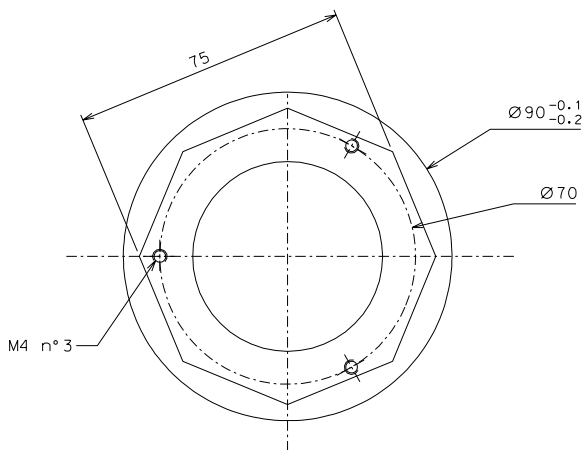


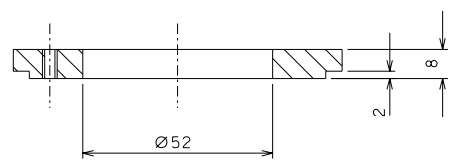
18



14



15



secondary coil: wire 41-AWG size 1007 turns for coil.

Use only kapton insulated wires approved by LIGO, all other kinds of enamel are forbidden.

modified part 14		23-06-06	
modified external dia part 18		10-04-06	
ref.	note	date	signature
modifications			
18	4	AISI 304	1/1
15	4	ARMCO steel	1/1
14	4	peek 1000	1/1
ref.	pieces	mat. and treatments	scale

General machining tolerances UNI 5307-63								
Dimensions	< 6	6-30	30-120	120-315	315-1000	>1000-2000	>2000-4000	>4000
linear Tol.	± 0.1	± 0.2	± 0.3	± 0.5	± 0.8	± 1.2	± 2	± 3
angular Tol.	± 1	± 30'	± 20'	± 10' referred to the shortest side				
designed for							R.De Salvo	
LIGO PROJECT							draw. by G. Gennaro-PROMECA	
title							date	
HAM-OPTICAL BENCH							2-01-05	
DETAILS FILTER							scale	
							1/1	
							LIGO-D051125-02-D	
							detail from	
							106	
							A 2	