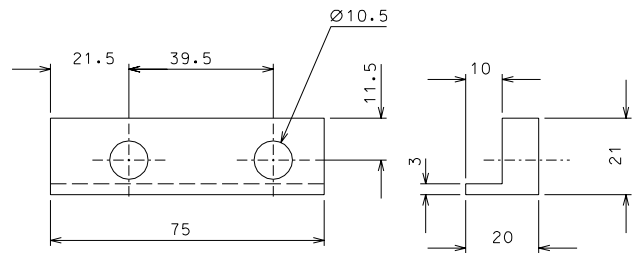
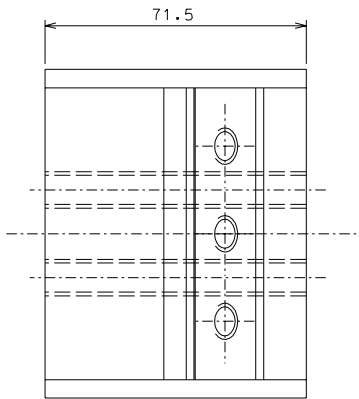
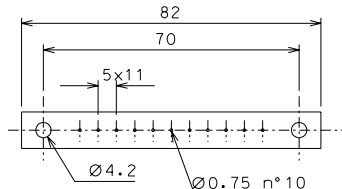
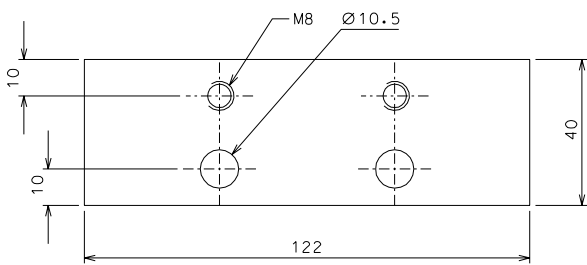
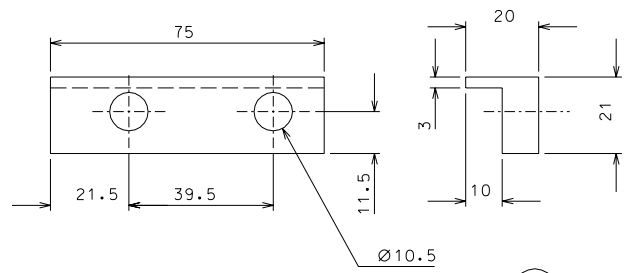
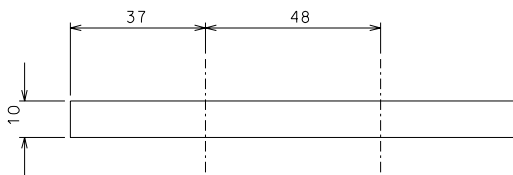


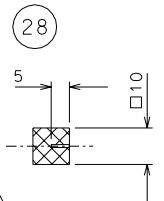
26



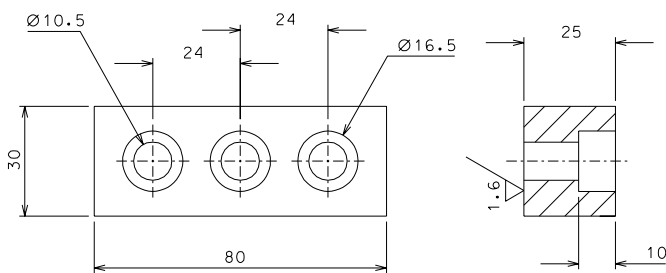
27



28



24 nickel flashing



21

modified n° pieces. detail 28				10-02-06	
ref.	note	date	signature		
modifications					
28	32	AISI 304	1/1		
27	32	AISI 304	1/1		
26	32	AISI 304	1/1		
24	32	Fe 360	1/1		
21	32	AISI 304	1/1	72	8 peek 1000 1/1
ref.	pieces	mat. and treatments	scale	ref.	pieces mat. and treatments scale

General machining tolerances UNI 5307-63								
Dimensions	< 6	6-30	> 30-120	> 120-315	> 315-1000	> 1000-2000	> 2000-4000	> 4000
Linear Toli.	± 0.1	± 0.2	± 0.3	± 0.5	± 0.8	± 1.2	± 2	± 3
angular Toli.	± 1'	± 30'	± 20'	± 10' referred to the shortest side				
designed for				R.De Salvo				
draw. by				G. Gennaro-PROMECC				
date				30-12-04				
title				scale 1/1				
HAM-OPTICAL BENCH				LIGO-D051123-01-D				
DETAILS FILTER				detail from 105-106 A 2				