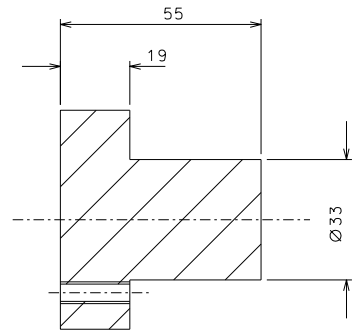
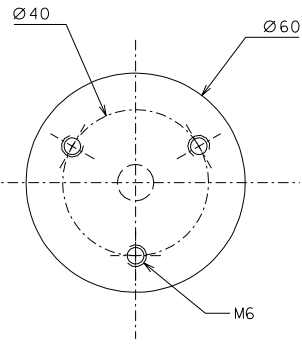
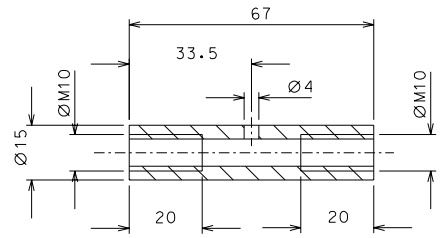


23

nickel flashing

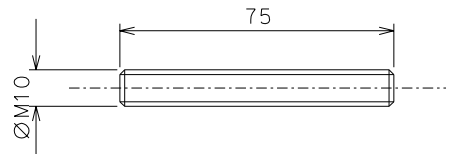
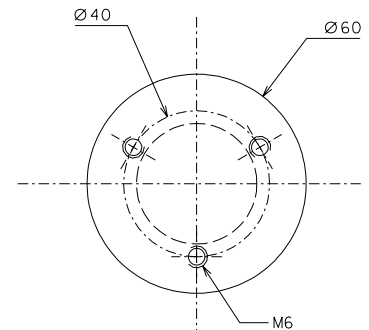


13

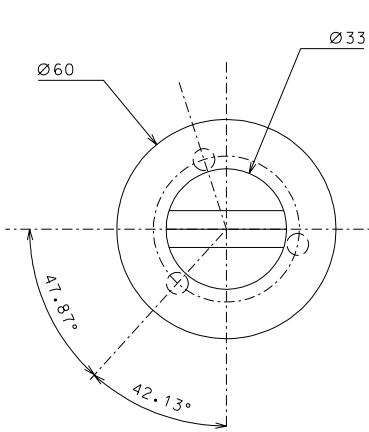


23.1

nickel flashing

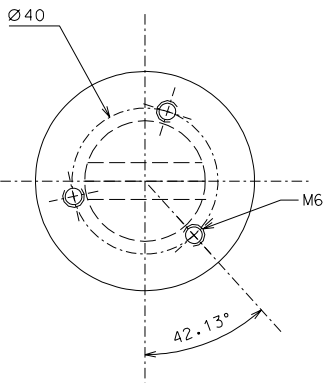
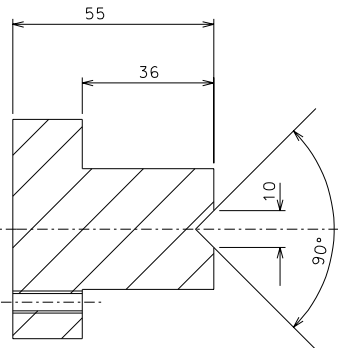


288



23.2

nickel flashing



	added part 288 and modif. 13	02-10-06	
	modified all parts	19-06-06	
	modified part 23	11-05-06	
	taked off det. 22	05-02-06	
ref.	note	date	signature
modifications			
288	4	AISI 316	1/1
23.2	1	C 40 hardened	1/1
23.1	2	C 40 hardened	1/1
23	1	C 40 hardened	1/1
13	16	AISI 304	1/1
ref.	pieces	mat. and treatments	scale
ref.	pieces	mat. and treatments	scale

General machining tolerances UNI 5307-63						
Dimensions	< 6	>6-30	>30-120	>120-315	>315-1000	>1000-4000
linear Tol.	±0,1	±0,2	±0,3	±0,5	±0,8	±1,2
angular Tol.	±1'	±30'	±20'	±10' referred to the shortest side		
designed for		R.De Salvo				
draw. by		G. Gennaro-PROMEC				
date		2-01-05		scale 1/1		
title		HAM-OPTICAL BENCH				
DETAILS FILTER		LIGO-D051122-04-D		sheet 106 of 106		