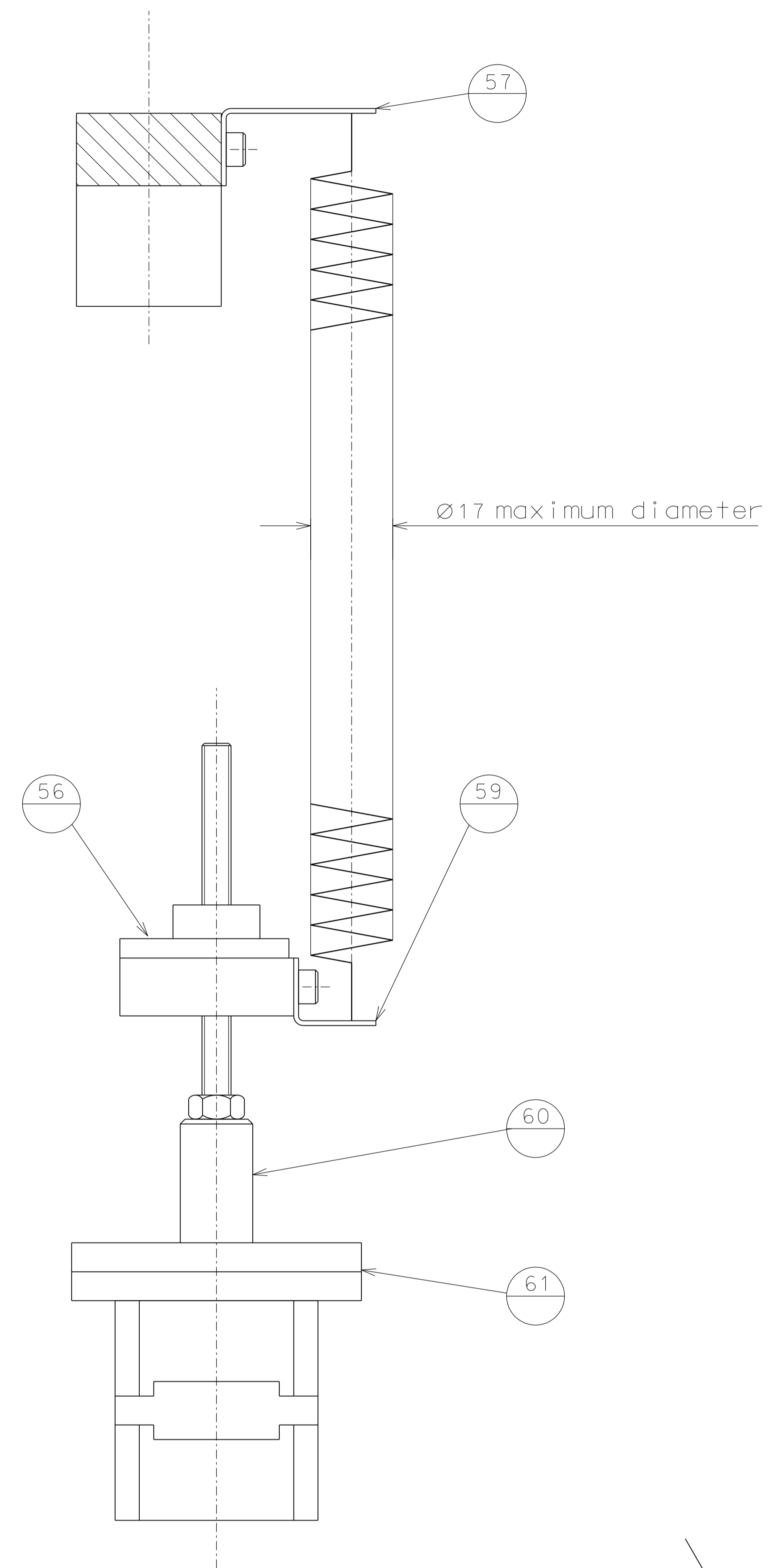
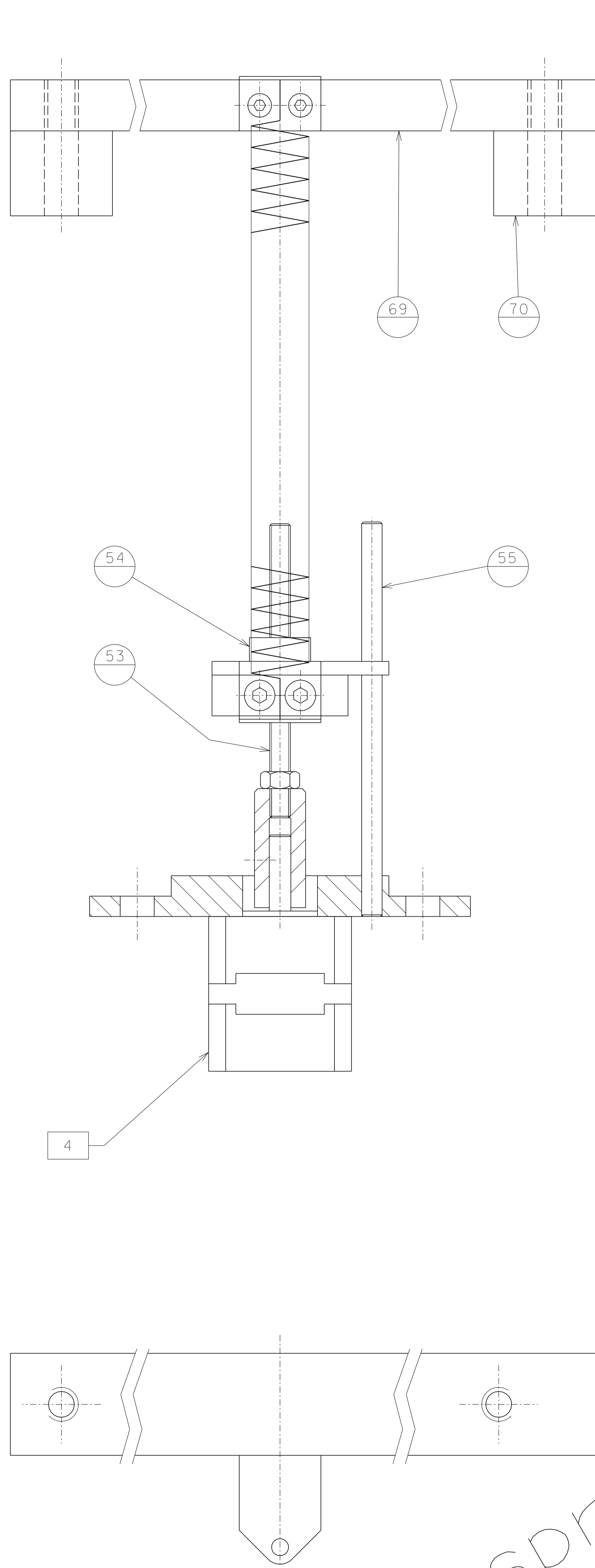


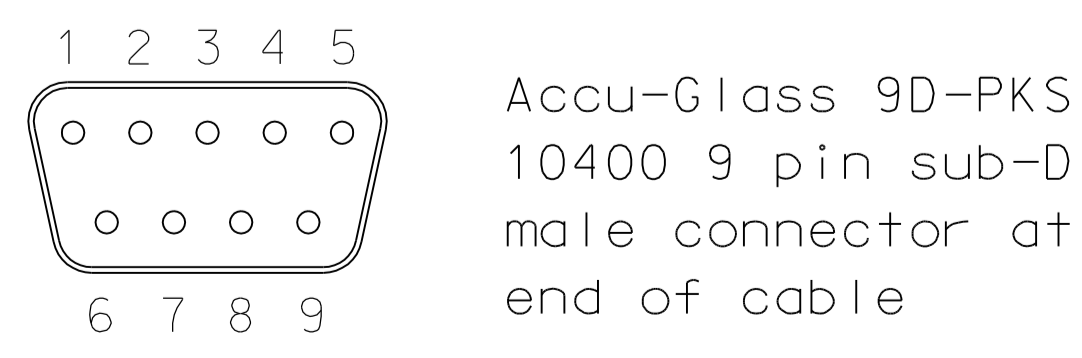
This system spring is not final



NOTE: spring range
 Old optival bench 65 to 120, stroke 56 mm.
 New optical bench 115 to 170, stroke 56 mm.

3 Stepping motor AML B17.2-R - n°4 pieces

ref.	draw.	added legend	ref.	draw.	added legend
60	grub M4x5	4			
53	nut M6	4			
54-56	tommy head M3x12	8			
59-54	tommy head M5x12	8			
motor-61	nut M3	16			
61-2	tommy head M10x30	8			
detail	type	n°piec.			
Screw's table					



Accu-Glass 9D-PKS
 10400 9 pin sub-D
 male connector at
 end of cable

Connection convention:
 1: A+
 2: A-
 6: B+
 7: B-
 3: T/C+
 8: T/C-

ref.	note	date	signature		
	not final design	22-11-06			
	modified parts 57-59-76	13-11-06			
	modified motor flange	03-07-06			
	added connection convention	05-05-06			
modifications					
59	141	spring clamp			
58	eliminated				
57	141	spring fixing			
56	140	counter rotation	70 141 spacer		
55	140	rod	69 141 vert. spring cl. supp.		
54	140	vert. movem. nut	61 140 support plate		
53	140	vert. movem. screw	60 140 joint		
ref.	draw.	added legend	ref.	draw.	added legend

		designed for R.De Salvo draw. by C.Gennaro-PRMEC date 11-12-04
title HAM-OPTICAL BENCH MOTORIZED VERTICAL SPRING GR.4		LIGO-D051109-06-D scale 1/1
		A 1