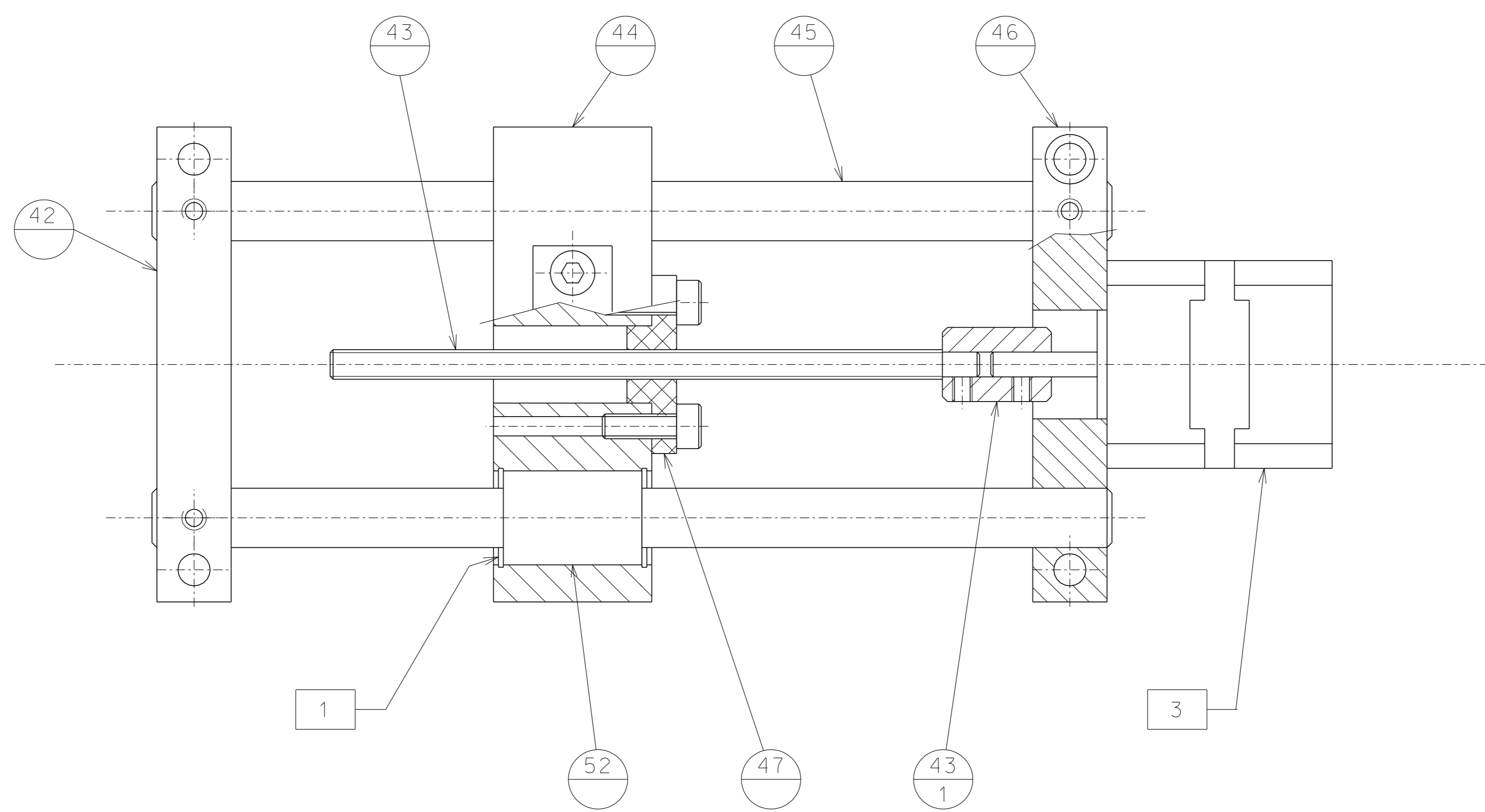


Accu-Glass 9D-PKS
10400 9 pin sub-D
male connector at
end of cable

Connection convention:
1: A+
6: A-
2: B+
7: B-
3: T/C+
8: T/C-



NOTE: Spring length range 0 to +/- 53 mm
Maximum X length half spring 362 mm
Minimum X length half spring 255 mm
Maximum Y length half spring 415.5 mm
Minimum Y length half spring 309.5 mm

ref.	draw.	added legend	date	signature
42-46-45	grub screw 5Mx8		16	
49-4	countersunk head M10x25 (S)		8	
51-44	tormy head screw 5Mx16		8	
50-51-48-49	tormy head screw M4x16 (S)		24	
47-44	tormy head screw 5Mx16		8	
42-32	tormy head screw 6Mx50 (S)		8	
46-32	tormy head screw 6Mx60 (S)		8	
motor-46	nut M3		16	
detail	type		n°piec.	

Screw's table

- 1 Ring seeger J 19x1 V- n°16 pieces
- 2 Suppressed
- 3 Stepping motor AML B17.2-R - n°4 piece

ref.	draw.	added legend	date	signature
modifications				
47	143	hor. movem. nut		
46	143	motor flange		
45	143	rod		
44	139	sled	52	139 bushing
43.1	143	joint to motor	51	143 central spring supp.
43	143	hor. mov. screw	50	143 centrI spring clamp
42	143	support	49	139 spring support
			48	139 spring clamp
ref.	draw.	added legend	date	signature

	designed for R.De Salvo
	draw. by G.Gennaro-PROMECC
date 11-12-04	
title HAM-OPTICAL BENCH	
scale 1/1	
LIG0-D051108-07-D	
SLIDE GR.5	
A 1	