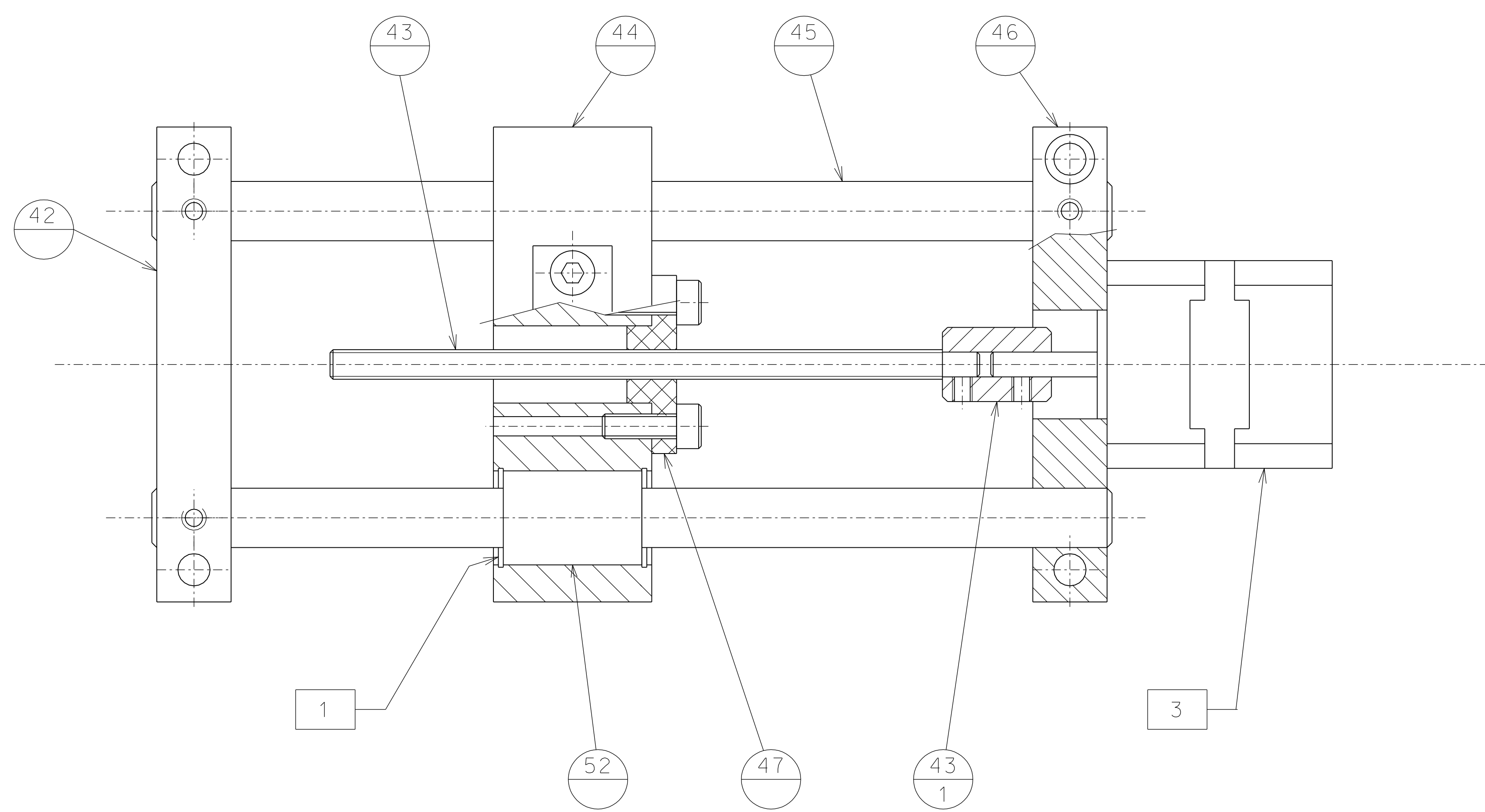


Accu-Glass 9D-PKS
10400 9 pin sub-D
male connector at
end of cable

Connection convention:
1: A+
6: A-
2: B+
7: B-
3: T/C+
8: T/C-



NOTE: Spring length range 0 to +/- 53 mm
Maximum length half spring 170 mm
Minimum length half spring 117 mm

ref.	draw.	added legend	date	signature
42-46-45	grub screw 5Mx8		16	
49-4	countersunk head M10x25 (S)		8	
51-44	tormy head screw 5Mx16		8	
50-51-48-49	tormy head screw M4x16 (S)		24	
47-44	tormy head screw 5Mx16		8	
42-32	tormy head screw 6Mx50 (S)		8	
46-32	tormy head screw 6Mx60 (S)		8	
motor-46	nut M3		16	
detail	type		n°piec.	

Screw's table

- 1 Ring seeger J 19x1 V- n°16 pieces
- 2 Suppressed
- 3 Stepping motor AML B17.2-R - n°4 piece

ref.	draw.	added legend	date	signature
changed clamp springs			11-11-06	
modified connector convention			06-07-06	
deleted part 230 in part list			24-05-06	
added connector convention			05-05-06	
modifications				
47	143	hor. movem. nut		
46	143	motor flange	76	139 horizontal spring
45	143	rod	52	139 bushing
44	139	sled	51	143 central spring supp.
43.1	143	joint to motor	50	143 centrI spring clamp
43	143	hor. mov. screw	49	139 spring support
42	143	support	48	139 spring clamp
ref.	draw.	added legend	ref.	draw.

	designed for R.De Salvo draw. by G.Gennaro-PROMECC date 11-12-04
	title HAM-OPTICAL BENCH SLIDE GR.5 scale 1/1
LIGO-D051108-06-D A 1	