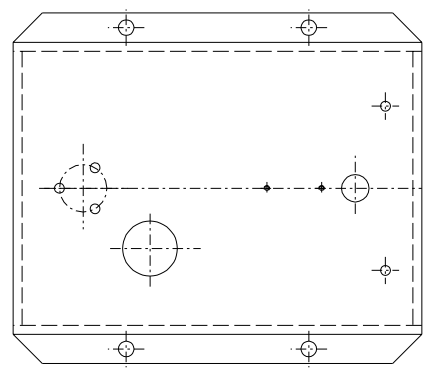
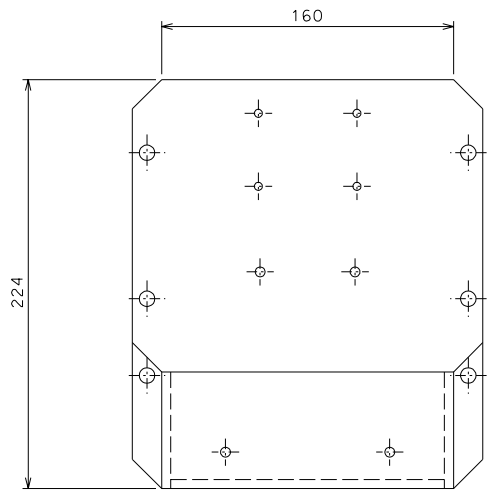
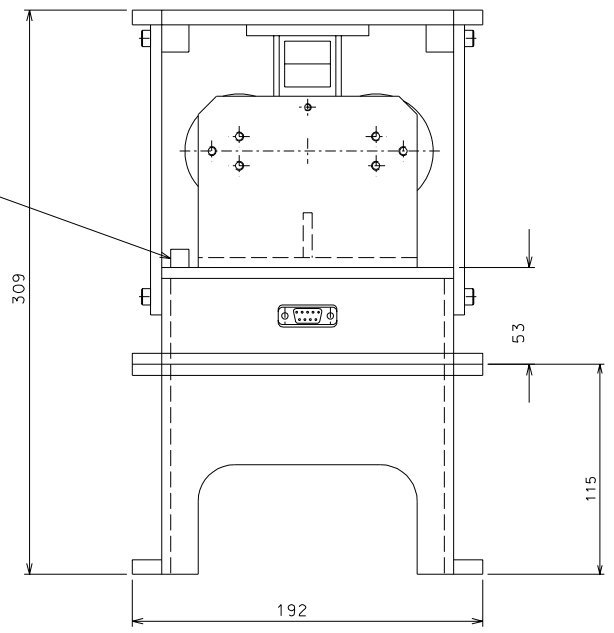


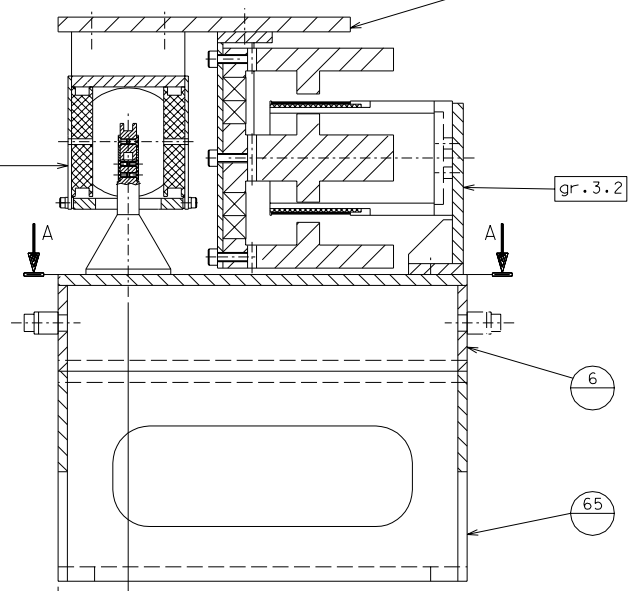
72



gr.3.1



38.4



gr.3.2



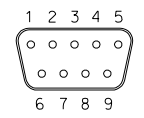
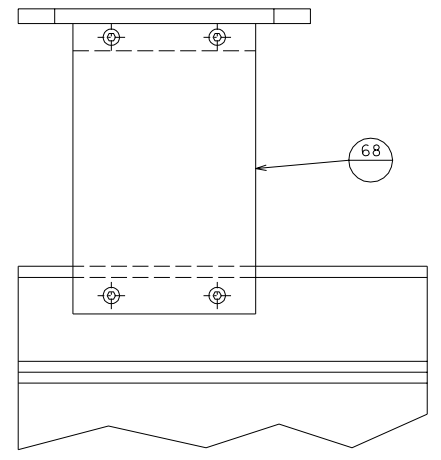
6

65

5

ref.	note	date	signature
5-5.1	countersunk head M6x20 (S)	16	
6-65	washer d=8	16	
6-65	nut M8	16	
6-65	tormy head M8x20	16	
5-6-68	tormy head M5x12 (S)	32	
4-5	tormy head M6x20	16	
1-65	tormy head M6x20	16	
detail	type	n°piec.	

Screw's table



Accu-Glass 9D-PKS 10400  
9 pin sub-D male connector  
on stand

Connection convention:

- 1: LVDT drive +
- 6: LVDT drive -
- 2: LVDT sense +
- 7: LVDT sense -
- 3-4: act. coil +
- 8-9: act. coil -
- 5: shields

ref.	draw.	added legend	ref.	draw.	added legend
gr.3.1	112	LVDT	gr.3.2	111	actuator
72	123	electr. conn. bar			
68	129	LVDT/act. transp. plate			
65	129	LVDT/act. LI60-I spacer			
6	130	sensor/act. base			
5	130	sensor/act. plate			

	designed for <b>R.De Salvo</b> draw. by <b>G. Gennaro-PROMECA</b> date 26-12-04
	title <b>HAM-OPTICAL BENCH</b> LVDT-ACTUATOR GR.3 scale 1/2
A 2	

view A-A