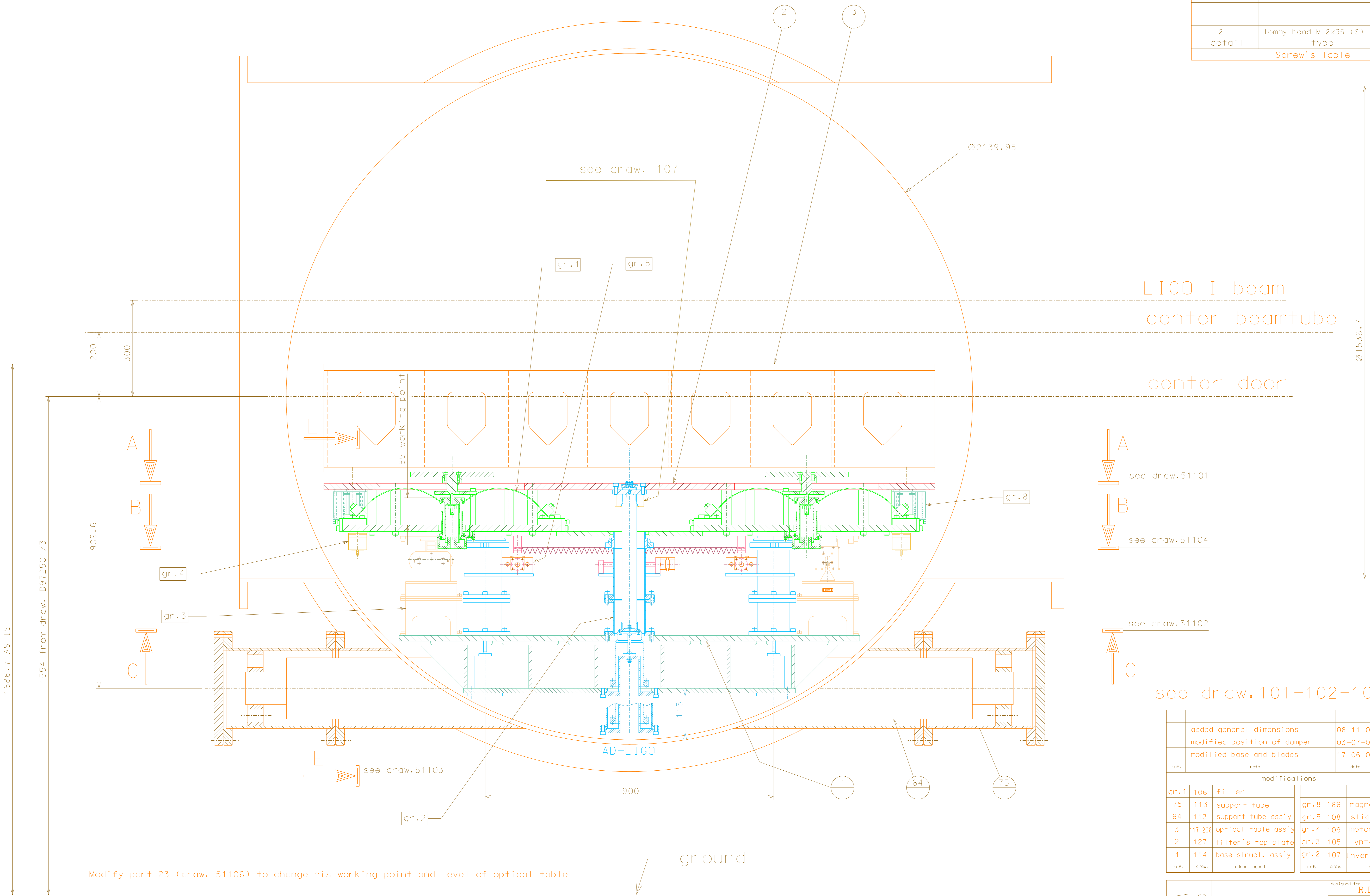


2	tommy head M12x35 (S)	64
detail	type	n°piec.
Screw's table		



LIGO-I beam
center beamtube

center door

A
see draw.51101

B
see draw.51104

see draw.51102

see draw.101-102-103-104

added general dimensions	08-11-06	
modified position of damper	03-07-06	
modified base and blades	17-06-06	
ref.	note	date

modifications			
ref.	draw.	added legend	added legend
gr.1	106	filter	
75	113	support tube	gr.8 166 magnetic damper
64	113	support tube ass'y	gr.5 108 slide
3	117-206	optical table ass'y	gr.4 109 motorized spring
2	127	filter's top plate	gr.3 105 LVDT-actuator
1	114	base struct. ass'y	gr.2 107 Inverted Pendulum

LIGO PROJECT		designed for	R.De Salvo
		draw. by	G. Gennaro-PROMEC
HAM-OPTICAL BENCH SECTION D-D		date	26-12-04
		title	LIGO-D051100-05-D
		scale	1/6
			A 1

Modify part 23 (draw. 51106) to change his working point and level of optical table

ground