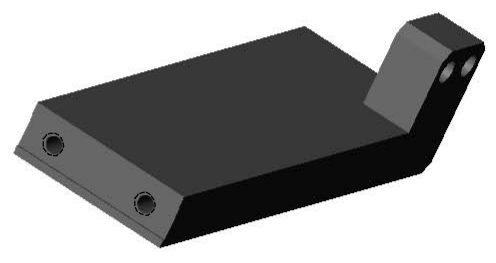


NOTES: (UNLESS OTHERWISE SPECIFIED)  
 NOTES: UNLESS OTHERWISE SPECIFIED.

1. ALL PARTS SHALL BE MANUFACTURED IN ACCORDANCE WITH ASI SPECIFICATION 20008225 (LIGO E048225).
2. REMOVE ALL BURRS AND SHARP EDGES .005-.015.
3. MACHINE FILLET RADII .003-.015.
4. MARK PART AND SERIAL NUMBER IN LOCATION APPROXIMATELY AS SHOWN USING 0.07-INCH HIGH CHARACTERS IN ACCORDANCE WITH 20006686, TYPE I, CLASSES 4, 5, OR 6. SERIAL NUMBERS START AT .001 FOR FIRST PART AND PROCEED CONSECUTIVELY. PARTS TOO SMALL TO MARK SHALL BE IDENTIFIED IN ACCORDANCE WITH 20006686, TYPE II.
5. COUNTERSINK 82° ALL DRILLED HOLES .015-.030 DEEP BOTH SIDES.

REV.	DATE	DCN #	DRAWING TREE #

ITEM NO.	REQ. QUANTITY	SPARE QUANTITY	TOT. QUANTITY	PART NUMBER	DESCRIPTION	SUPPLIER
PARTS LIST						
UNLESS OTHERWISE SPECIFIED:		DATE		NAME		
DIMENSIONS ARE IN INCHES		9/13/2005		LIGO CALIFORNIA INSTITUTE OF TECHNOLOGY MASSACHUSETTS INSTITUTE OF TECHNOLOGY		
TOLERANCES:		DRAWN BY		SYSTEM		
XX ± .02		KMASON		SUB-SYSTEM		
XXX ± .005		CHECKED		NEXT ASSY: D047966 HORIZ ACTUATOR ASSY.		
ANGULAR ± 1 DEG		DATE		PART NAME: STAGE 0-1 HORIZ. LOCKDOWN		
MATERIAL:		COMMENTS:		SIZE DWG. NO.		
6061-T6 AL				C D050341-00-D		
FINISH:				SCALE:		
NONE				SHEET 1 OF 1		



FILE NAME/LOCATION: