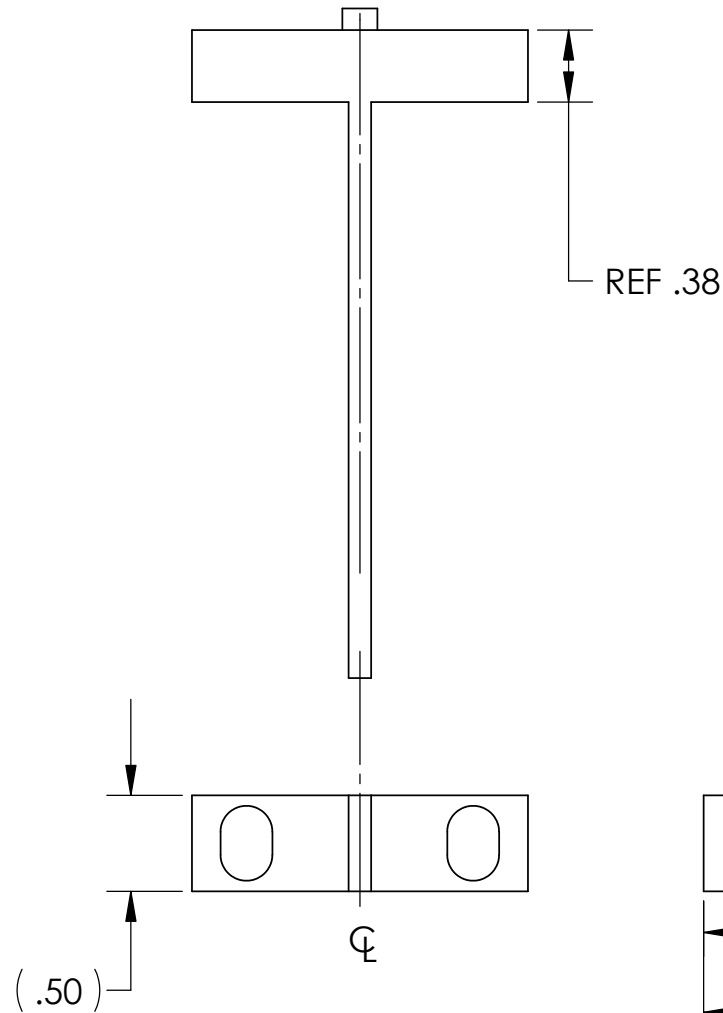
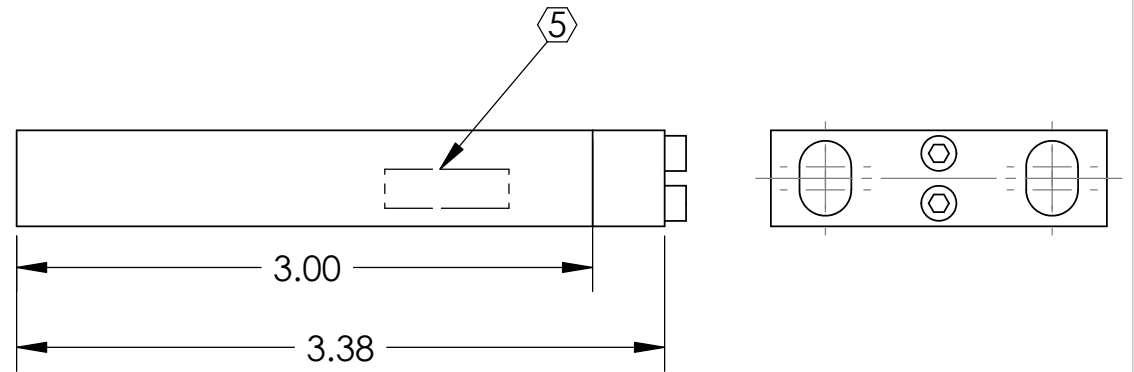
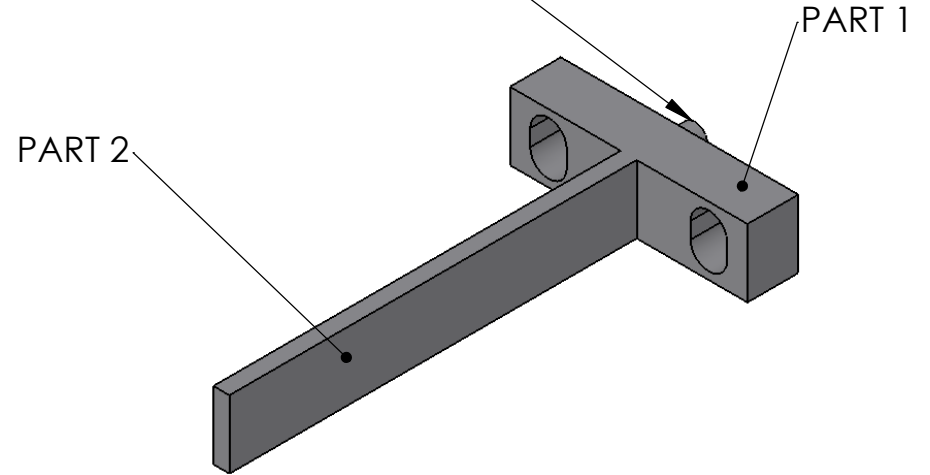


REV.	DATE	DCN #	DRAWING TREE #
A	28 MAR 2006	E060057-00	E060059-A



2X, 4-40 SHCS x 5/16" LONG



**NOTES: (UNLESS OTHERWISE SPECIFIED)**

1. PART CAN BE MADE FROM TWO PARTS, PARTS 1 & 2, AS SHOWN & WELDED TOGETHER.
  2. DO NOT SCALE FROM DRAWING.
  3. REMOVE ALL SHARP EDGES, R.02 MAX.
  4. ALL MACHINING FLUIDS SHALL BE WATER SOLUBLE AND FREE OF SULFUR, CHLORINE AND SILICONE.
- ⑤ SCRIBE, ENGRAVE OR MECHANICALLY STAMP DRAWING (NO INKS OR DYES) PART NUMBER, REVISION ON NOTED SURFACE OF PART FOLLOWED ON THE NEXT LINE WITH A THREE DIGIT SERIAL NUMBER. SERIAL NUMBERS START AT 001 FOR THE FIRST ARTICLE AND PROCEED CONSECUTIVELY. USE .12" HIGH CHARACTERS, UNLESS THE SIZE OF THE PART DICTATES SMALL CHARACTERS. A VIBRATORY TOOL MAY BE USED. EXAMPLE: D050247-A S/N 001

DIMENSIONS ARE IN INCHES

TOLERANCES:  
 .XX ± 0.01  
 .XXX ± 0.005

ANGULAR ± 0.5 °

**MATERIAL**  
6061 Alloy

**FINISH**  
32 μ inch

	NAME	DATE
<b>DRAWN</b>	C Torrie	JUN 6th 05
<b>DESIGNED</b>	R Jones	May 31st 05
<b>CHECKED</b>		
<b>APPROVED</b>		

**LIGO** CALIFORNIA INSTITUTE OF TECHNOLOGY  
 MASSACHUSETTS INSTITUTE OF TECHNOLOGY  
 IGR, GLASGOW UNIVERSITY GEO 600 GROUP

**SYSTEM** ADVANCED LIGO

**SUB-SYSTEM** SUS

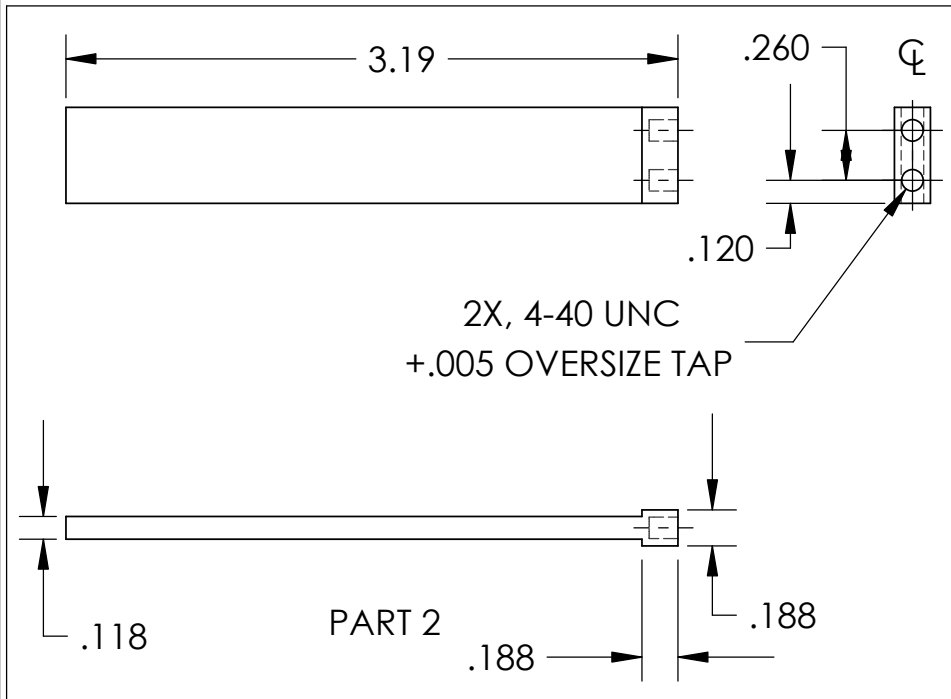
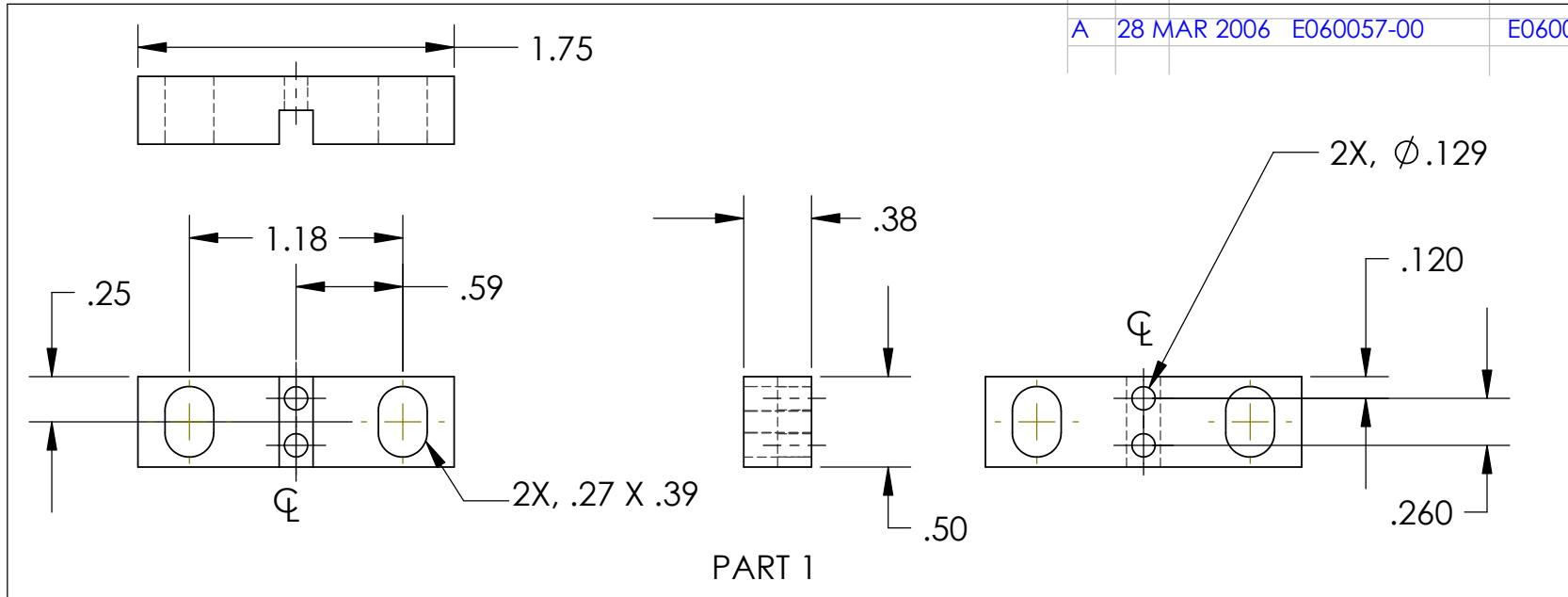
**NEXT ASSY** LOWER STR

**PART NAME** SPACER FOR BETWEEN THE LOWER CHAINS

**SIZE** **DWG. NO.** D050247 **REV.** A

**SCALE:** NTS **PROJECTION:** **SHEET 1 OF 2**

REV.	DATE	DCN #	DRAWING TREE #
A	28 MAR 2006	E060057-00	E060059-A



PART 1

PART 2

NOTES: (UNLESS OTHERWISE SPECIFIED)

- DO NOT SCALE FROM DRAWING
- REMOVE ALL SHARP EDGES, R.02 MAX.
- ALL MACHINING FLUIDS SHALL BE WATER SOLUBLE AND FREE OF SULFUR, CHLORINE AND SILICONE, SUCH AS CINCINNATI MILACRON'S CIMTECH 410 (STAINLESS STEEL)

④ SCRIBE, ENGRAVE OR STAMP DRAWING PART NUMBER, REVISION ON NOTED SURFACE OF PART AND THEN A THREE DIGIT SERIAL NUMBER. SERIAL NUMBERS START AT 001 FOR THE FIRST PART AND PROCEED CONSECUTIVELY. USE .07" HIGH CHARACTERS. A VIBRATORY TOOL MAY BE USED. EXAMPLE: D020188-00 SN 001

DIMENSIONS ARE IN INCHES

TOLERANCES:  
 .XX ± 0.01  
 .XXX ± 0.005

ANGULAR ± 0.5°

MATERIAL  
 6061 Alloy

FINISH  
 32 μ inch

	NAME	DATE
DRAWN		
CHECKED		
APPROVED		



SYSTEM  
 ADVANCED LIGO

SUB-SYSTEM  
 SUS

NEXT ASSY  
 LOWER STR

PART NAME  
 SPACER FOR BETWEEN THE LOWER CHAINS

SIZE DWG. NO. REV.  
 A D050247 A