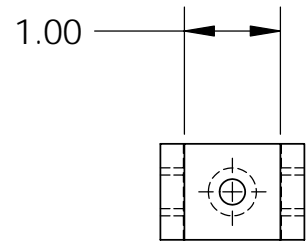
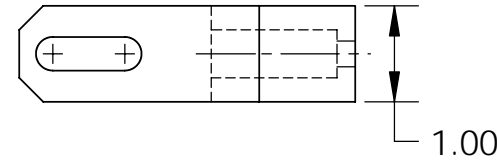
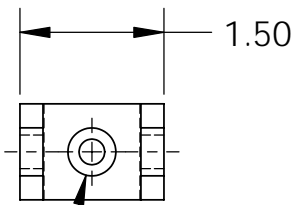
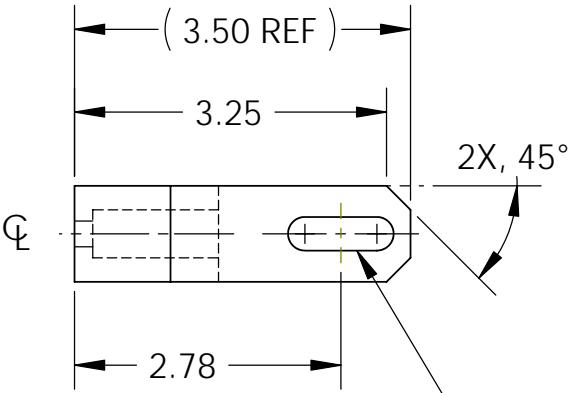
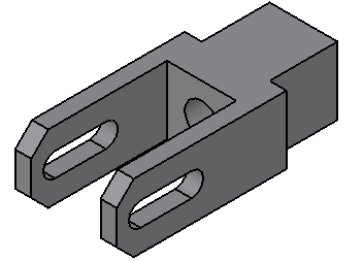
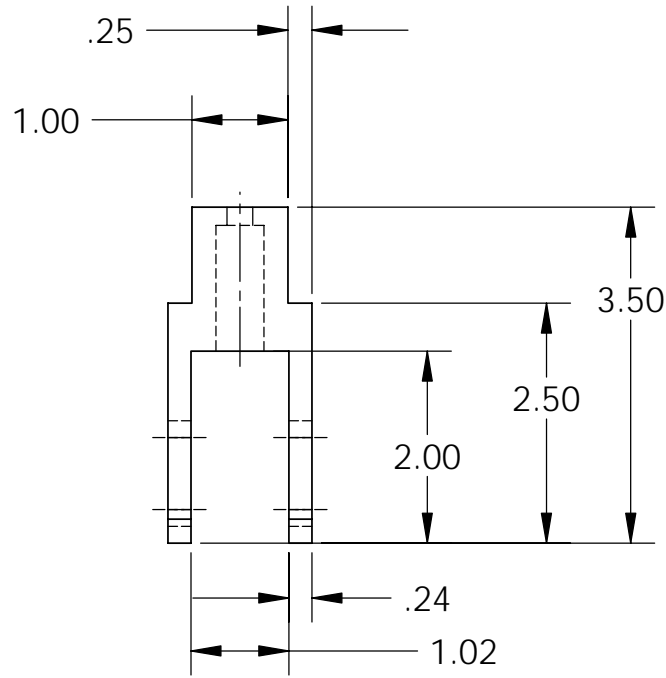


REV.	DATE	DCN #	DRAWING TREE #
A	28 MAR 2006	E060057-00	E060059-A



0.35 X 1.10
 $\varnothing .27$ THRU
 $\varnothing .50 \nabla 1.31$ MAX

NOTES: (UNLESS OTHERWISE SPECIFIED)

- DO NOT SCALE FROM DRAWING.
- REMOVE ALL SHARP EDGES, R.02 MAX.
- ALL MACHINING FLUIDS SHALL BE WATER SOLUBLE AND FREE OF SULFUR, CHLORINE AND SILICONE.
- SCRIBE, ENGRAVE OR MECHANICALLY STAMP DRAWING (NO INKS OR DYES) PART NUMBER, REVISION ON NOTED SURFACE OF PART FOLLOWED ON THE NEXT LINE WITH A THREE DIGIT SERIAL NUMBER. SERIAL NUMBERS START AT 001 FOR THE FIRST ARTICLE AND PROCEED CONSECUTIVELY. USE .12" HIGH CHARACTERS, UNLESS THE SIZE OF THE PART DICTATES SMALL CHARACTERS. A VIBRATORY TOOL MAY BE USED. EXAMPLE:
D050240-A
S/N 001

DIMENSIONS ARE IN INCHES

TOLERANCES:
.XX ± 0.01
.XXX ± 0.005

ANGULAR ± 0.5 °

MATERIAL
6061 Alloy

FINISH
32 μ inch

	NAME	DATE
DRAWN	C Torrie	JUN 3rd 05
DESIGNED	R Jones	JUN 3rd 05
CHECKED		
APPROVED		

CALIFORNIA INSTITUTE OF TECHNOLOGY
MIT MASSACHUSETTS INSTITUTE OF TECHNOLOGY
IGR, GLASGOW UNIVERSITY GEO 600 GROUP

SYSTEM **ADVANCED LIGO**

SUB-SYSTEM **SUS**

NEXT ASSY **LOWER STR**

PART NAME **TIE FOR ANGLED TRANS SIDE STRAP**

SIZE **A** DWG. NO. **D050240** REV. **A**

SCALE: 1:2 PROJECTION: SHEET 1 OF 1