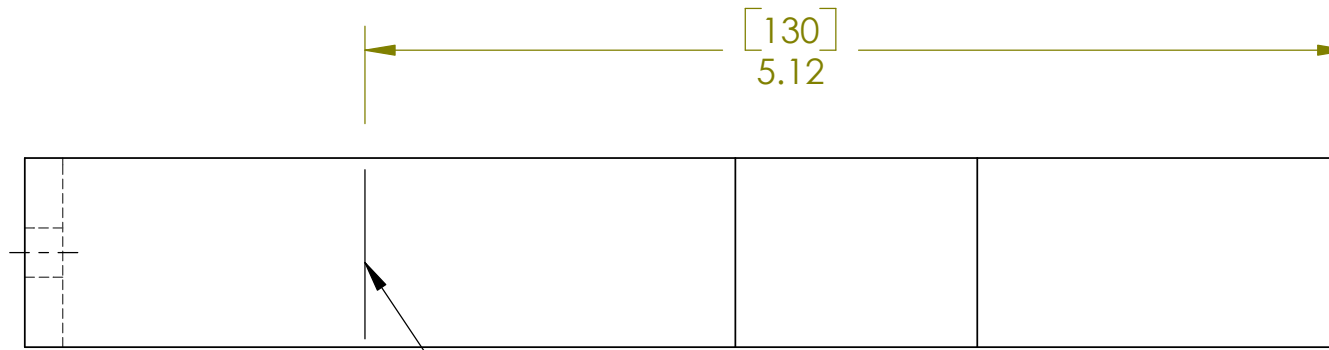
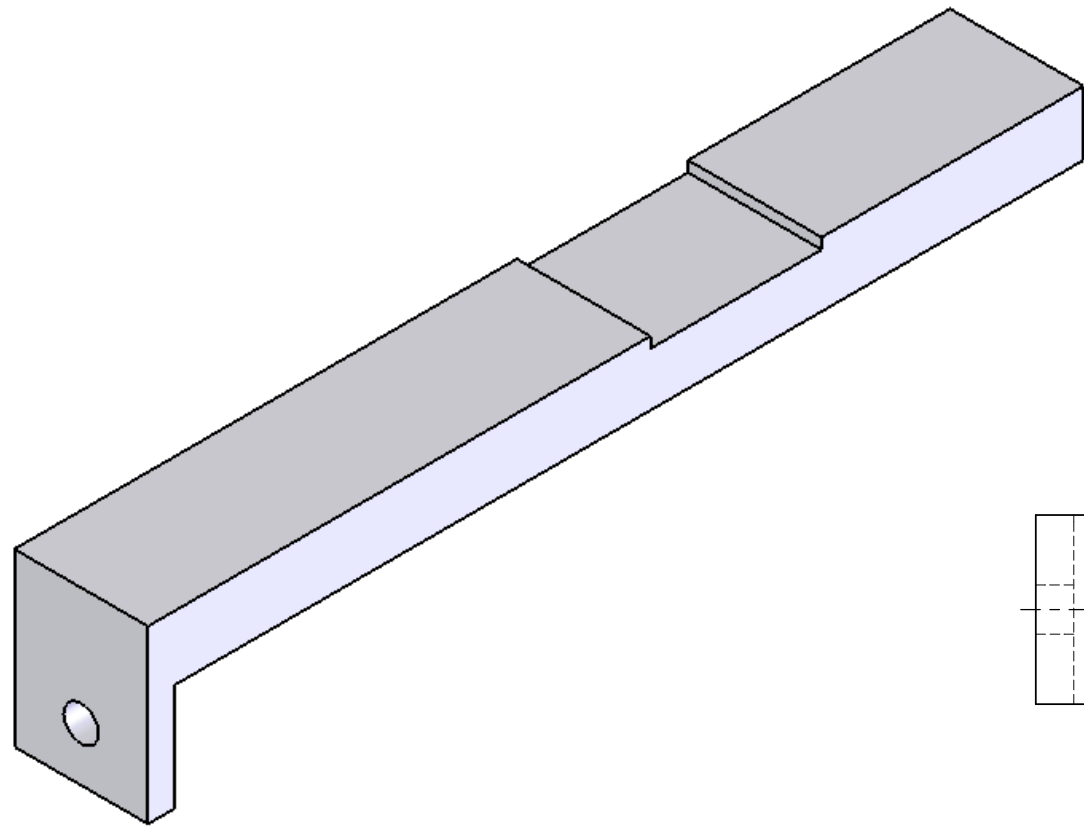
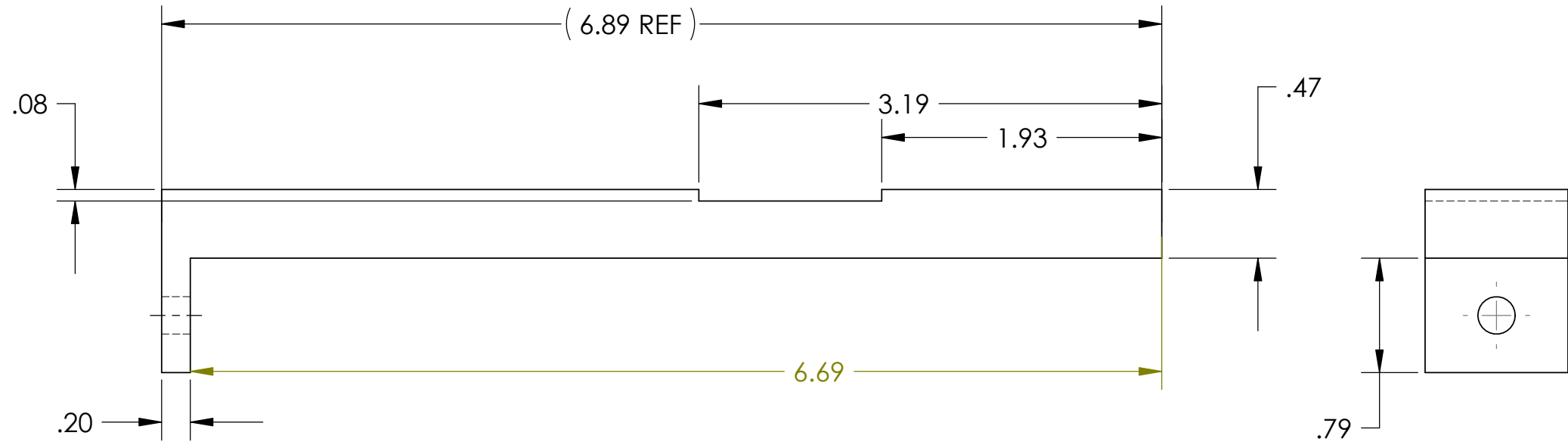
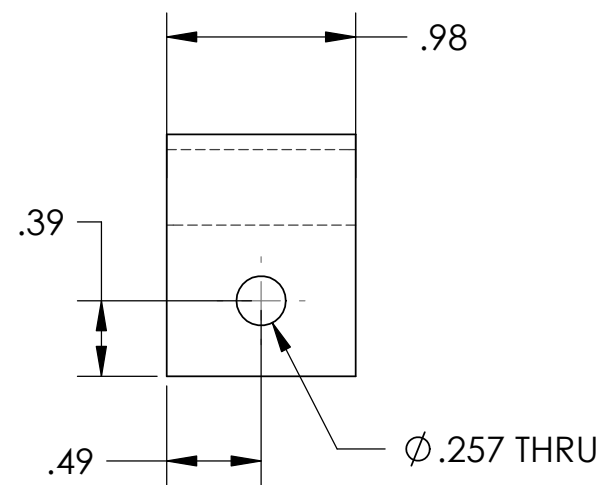


REV.	DATE	DCN #	DRAWING TREE #
A3	28 MAR 2006	E060057-00	E060059-A



ADD SCRIBE MARK



**NOTES: (UNLESS OTHERWISE SPECIFIED)**

- DO NOT SCALE FROM DRAWING.
- REMOVE ALL SHARP EDGES, R.02 MIN.
- ALL MACHINING FLUIDS SHALL BE WATER SOLUBLE AND FREE OF SULFUR, CHLORINE AND SILICONE.
- SCRIBE, ENGRAVE OR MECHANICALLY STAMP DRAWING (NO INKS OR DYES) PART NUMBER, REVISION ON NOTED SURFACE OF PART FOLLOWED ON THE NEXT LINE WITH A THREE DIGIT SERIAL NUMBER. SERIAL NUMBERS START AT 001 FOR THE FIRST ARTICLE AND PROCEED CONSECUTIVELY. USE .12" HIGH CHARACTERS, UNLESS THE SIZE OF THE PART DICTATES SMALL CHARACTERS. A VIBRATORY TOOL MAY BE USED. EXAMPLE: D050213-A S/N 001

DIMENSIONS ARE IN INCHES

TOLERANCES:  
 .XX ± 0.01  
 .XXX ± 0.005

ANGULAR ± 0.5°

**PARTS LIST**

MATERIAL		PFA 440HP
FINISH		µ inch
DRAWN	C Torrie	27 APR 2005
DESIGNED	R Jones	12 MAR 2005
CHECKED		
APPROVED		

**CALIFORNIA INSTITUTE OF TECHNOLOGY**  
**MASSACHUSETTS INSTITUTE OF TECHNOLOGY**  
 IGR, GLASGOW UNIVERSITY GEO 600 GROUP

SYSTEM: **ADVANCED LIGO**

SUB-SYSTEM: **SUS**

NEXT ASSY: **Catcher/Assembly Rig**

PART NAME: **PFA 440HP BEARING PAD FOR ASSEMBLY**

SIZE DWG. NO.: **B D050213**

SCALE: NTS PROJECTION: SHEET 1 OF 1

REV. **A3**