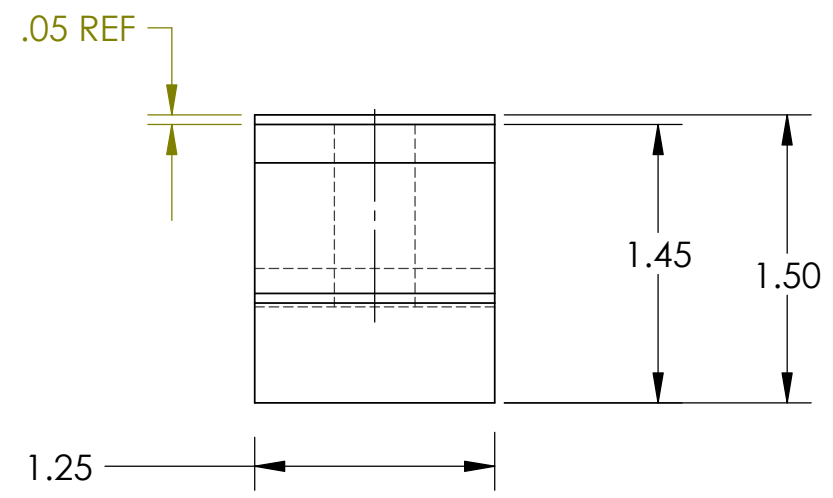
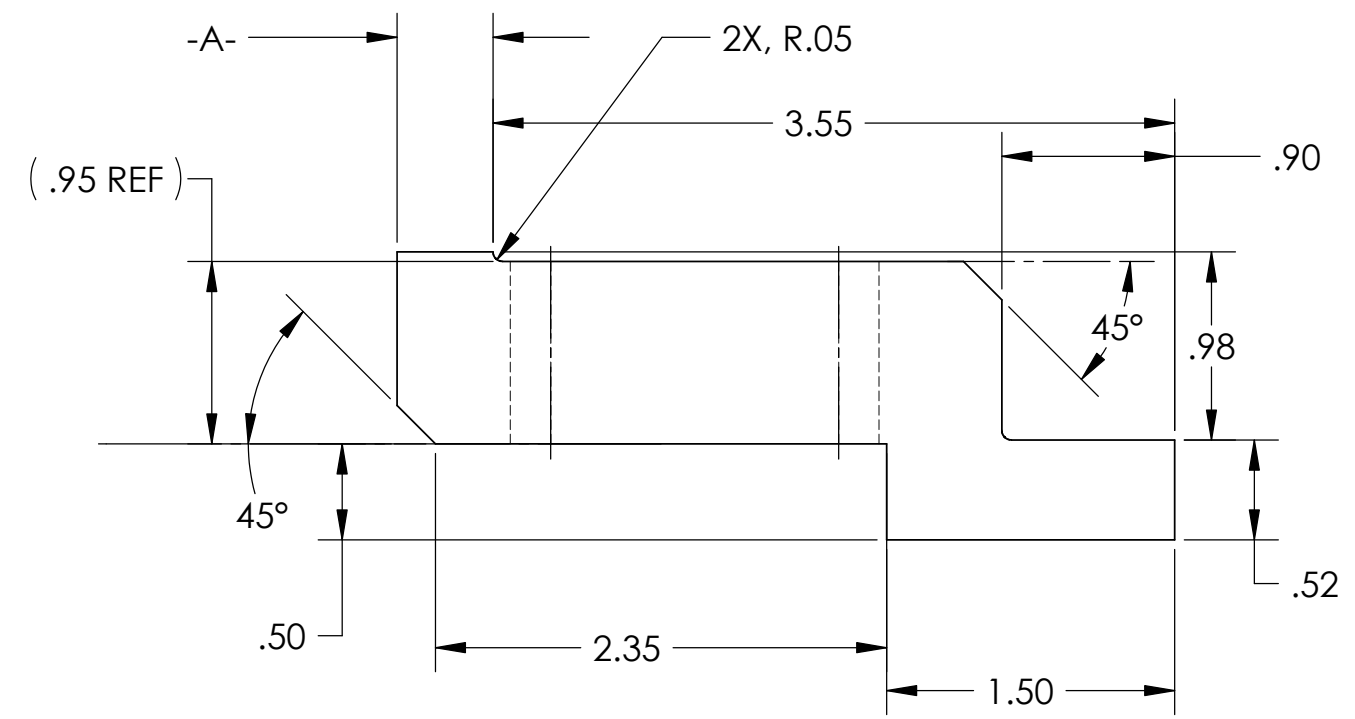
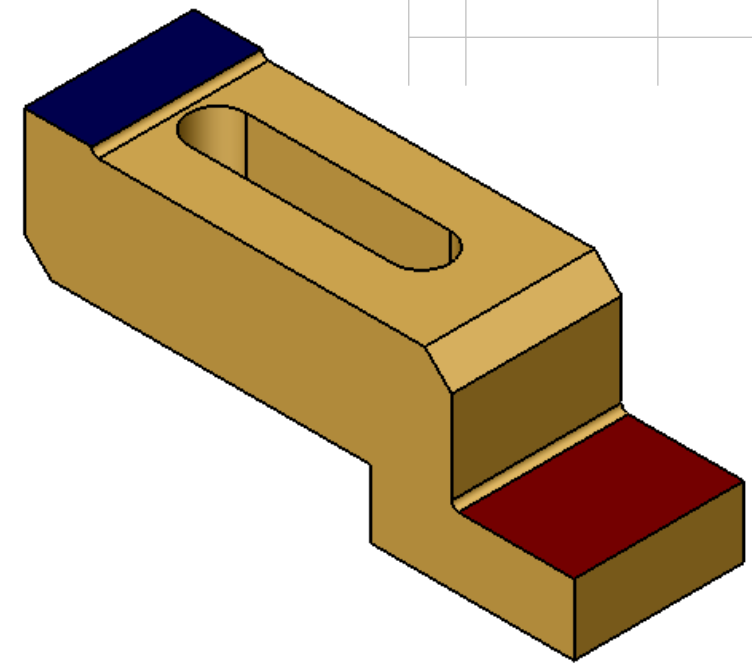
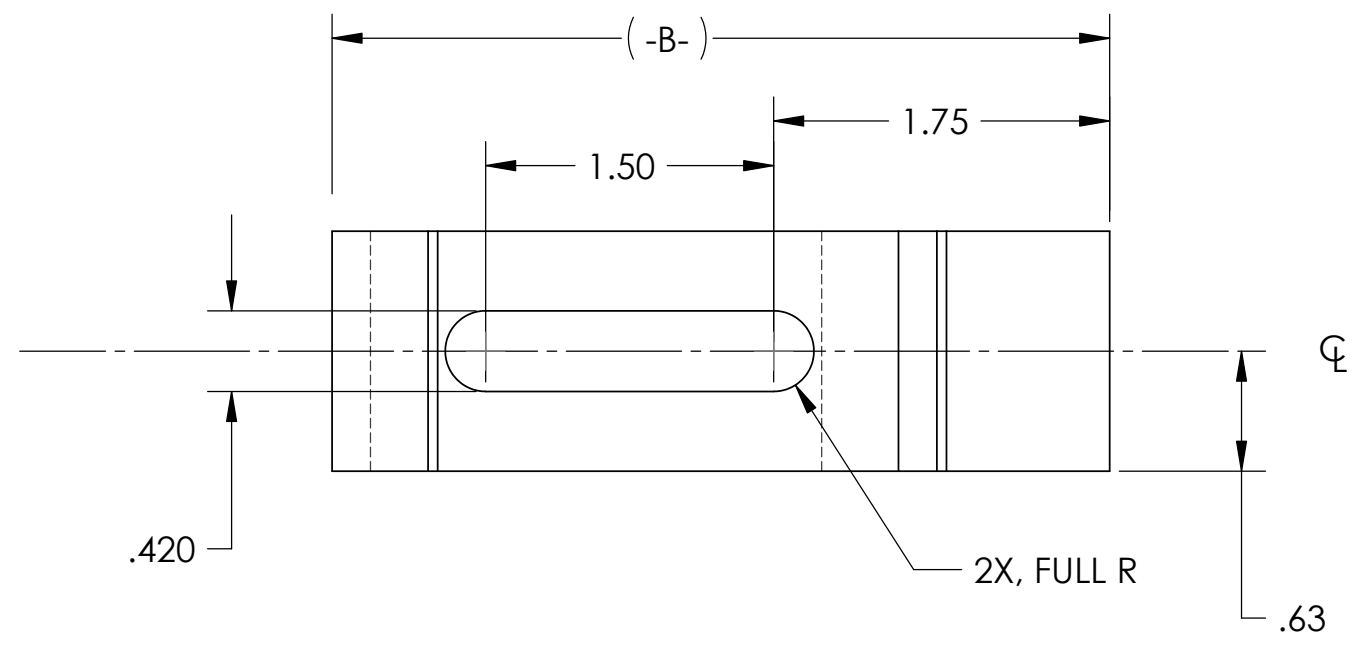


REV.	DATE	DCN #	DRAWING TREE #
A	MAR 23 2006	E060057-00	E060059-A



VARIANT	-A-	(REF -B -)
0	.50	4.05 REF
1	.34	3.89 REF

NOTES: (UNLESS OTHERWISE SPECIFIED)

1. DO NOT SCALE FROM DRAWING.
2. REMOVE ALL SHARP EDGES, R.02 MIN.
3. ALL MACHINING FLUIDS SHALL BE WATER SOLUBLE AND FREE OF SULFUR, CHLORINE AND SILICONE.
4. SCRIBE, ENGRAVE OR MECHANICALLY STAMP DRAWING (NO INKS OR DYES) PART NUMBER, REVISION ON NOTED SURFACE OF PART FOLLOWED ON THE NEXT LINE WITH A THREE DIGIT SERIAL NUMBER. SERIAL NUMBERS START AT 001 FOR THE FIRST ARTICLE AND PROCEED CONSECUTIVELY. USE .12" HIGH CHARACTERS, UNLESS THE SIZE OF THE PART DICTATES SMALL CHARACTERS. A VIBRATORY TOOL MAY BE USED. EXAMPLE: D050178-A S/N 001

INTERNAL NOTES
5. Mass, m = 1.0652 g.
6. D050150 HAS BEEN OPTIMISED FOR USE WITH A 1" HIGH LEDGE AND 3/8-24 TAPPED HOLES ON A 1" PITCH. ACCORDING TO THE THEORY 12 CLAMPS SHOULD BE USED.

DIMENSIONS ARE IN INCHES
TOLERANCES:
.XX ± 0.01
.XXX ± 0.005
ANGULAR ± 0.5°

MATERIAL
300 SSSL

FINISH
32 µ inch

DRAWN	CHECKED	APPROVED	NAME	DATE
			C TORRIE	12 APR 2005

PARTS LIST

SYSTEM ADVANCED LIGO
SUB-SYSTEM SUS
NEXT ASSY ETM C PTYPE UPPER STRUCTURE
PART NAME DOG CLAMP ALT LARGE
SIZE DWG. NO. D050178
REV. A
SCALE: NTS **PROJECTION:** **SHEET 1 OF 1**