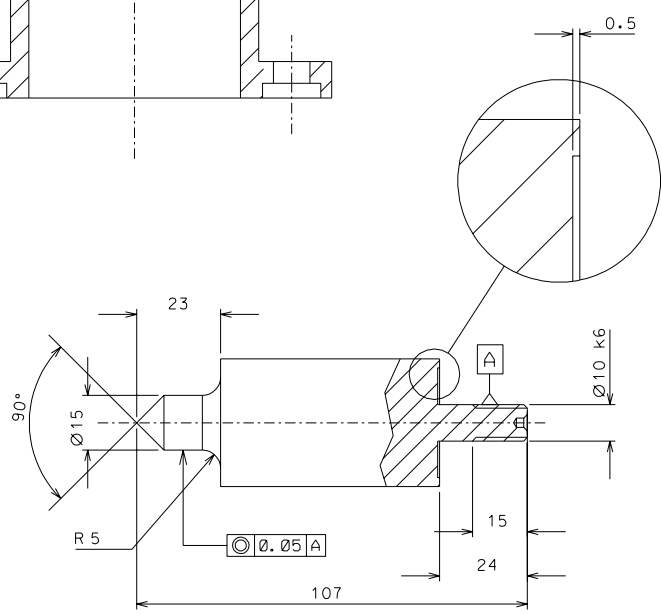
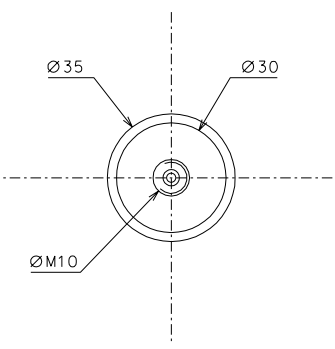


see drawing 027 (2)

(39) see drawing 037

(93)

(29) see drawing 035



(93) nickel plated

Note: Lock screws to align part 2 with part 4

93	4	C40	1/1				
ref.	pieces	mat. and treatments	scale	ref.	pieces	mat. and treatments	scale

General machining tolerances UNI 5307-63								
Dimensions	< 6	>=6-30	>=30-120	>=120-315	>=315-1000	>=1000-2000	>=2000-4000	>=4000
linear Toli.	± 0.1	± 0.2	± 0.3	± 0.5	± 0.8	± 1.2	± 2	± 3
angular Toli.	± 1'	± 30'	± 20'	referred to the shortest side				
designed for							R.De Salvo	
draw. by							G. Gennaro-PROMEC	
date							29-01-05	
title							scale 1/1	
HAM-OPTICAL BENCH							LIGO-D050148-00-D	
MOUNTING TOP PLATE TOOL							detail from A 2	