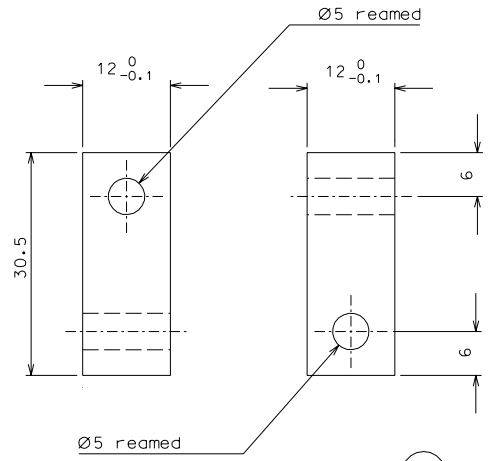
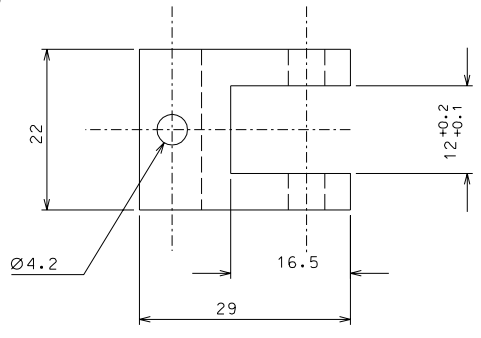


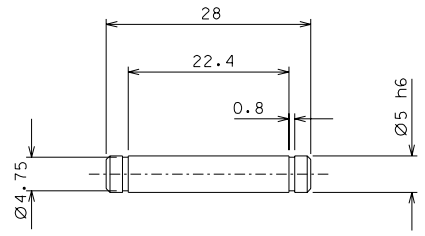
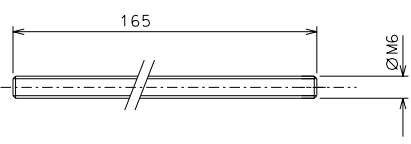
87



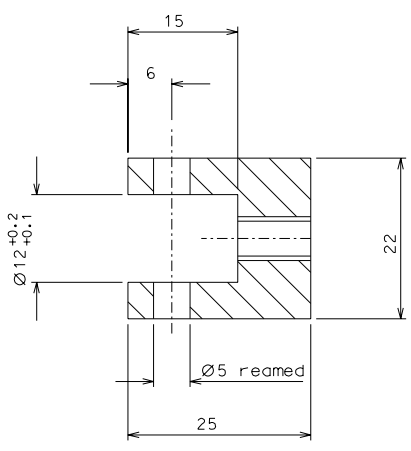
89



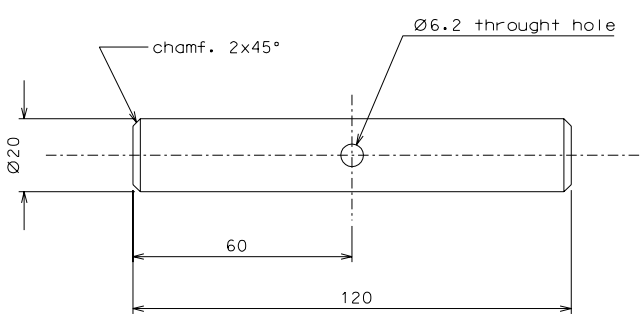
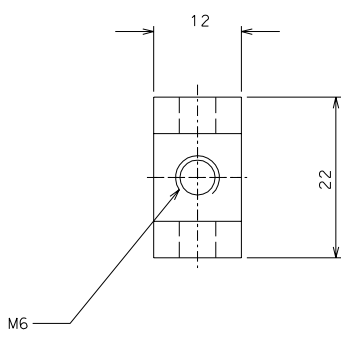
91



88



90



92

ref.	note	date	signature
modifications			
91	1 inox	1/1	
90	1 AISI 304	2/1	
89	1 AISI 304	2/1	
88	2 C 40	2/1	
87	1 AISI 304	2/1	
92	1 inox	1/1	
ref.	pieces	mat. and treatments	scale

General machining tolerances UNI 5307-63								
Dimensions	< 6	6-30	30-120	120-315	315-1000	>1000-2000	>2000-4000	> 4000
linear Toli.	± 0.1	± 0.2	± 0.3	± 0.5	± 0.8	± 1.2	± 2	± 3
angular Toli.	± 1'	± 30'	± 20'	± 10'				

referred to the shortest side

designed for	R.De Salvo	
draw. by	G. Gennaro-PROMEC	
date	29-01-05	scale 1/1
title	HAM-OPTICAL BENCH	
	DETAIL MOUNTING BLADE	
ref. from	144	A 2