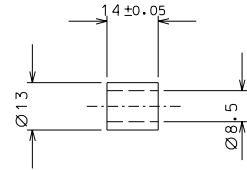
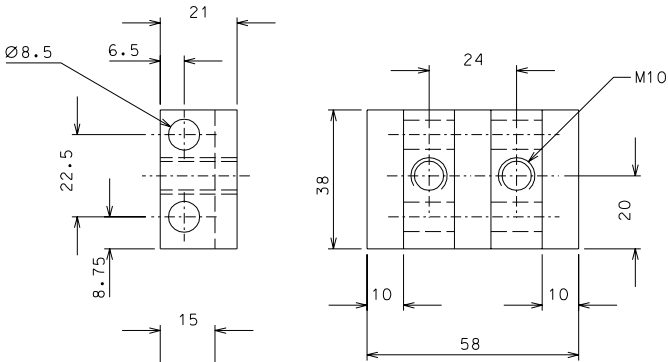


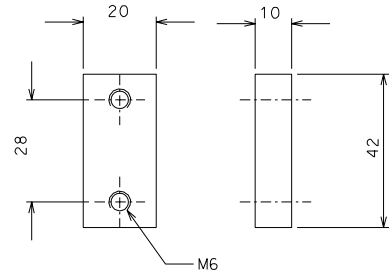
79



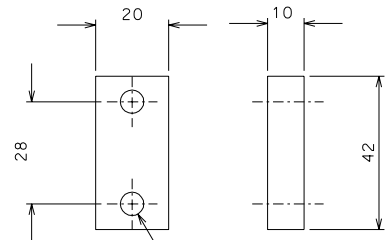
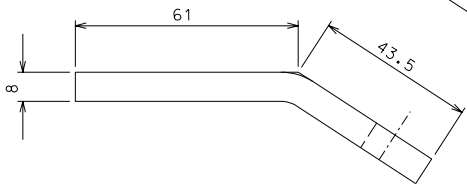
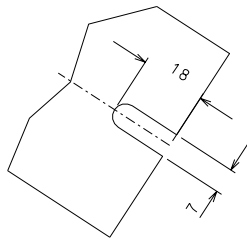
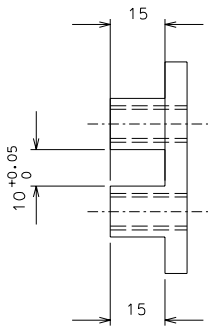
82



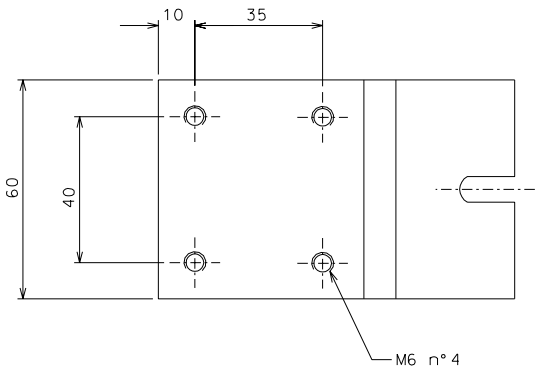
83



85



86



84

ref.	note	date	signature
modifications			
85	2 AISI 304 1/1		
84	2 AISI 304 1/1		
83	2 AISI 304 1/1		
82	8 AISI 304 1/1		
79	8 AISI 304 1/1		
86	2 AISI 304 1/1		
ref.	pieces	mat. and treatments	scale

General machining tolerances UNI 5307-63								
Dimensions	< 6	6-30	30-120	120-315	315-1000	>1000-2000	>2000-4000	>4000
Linear Toli.	± 0.1	± 0.2	± 0.3	± 0.5	± 0.8	± 1.2	± 2	± 3
angular Toli.	± 1' ± 30' ± 20'			± 10'				
designed for							referred to the shortest side	
LIGO PROJECT							R.De Salvo	
draw. by							G. Gennaro-PROMECA	
date							28-01-05	
title							scale 1/1	
HAM-OPTICAL BENCH							LIGO-D050146-01-D	
DETAIL MOUNTING BLADE							A 2	
ref. from							144	